



SCAN ME

Online Shop  
Heightsafety.com



SCAN ME

Website  
Safetylink.com

DATA SHEET

# SINGLE ROPE PULLEY

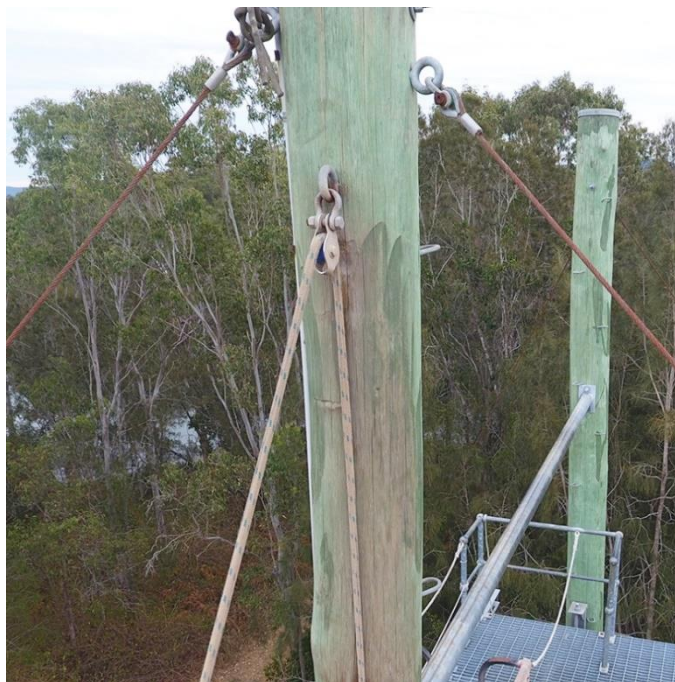
Stainless Steel Wheel | Product Code: REC.PULL007.02



## What am I used for?

Heavy duty pulley used on giant swing and rock climbing.

- Suitable for cable and rope between 10-16mm in diameter.
- Single person load rated 15kN.
- Stainless Steel wheel stepped and tapered prevents excessive rope wear and deposits.
- Innovative design incorporates axle fail safe, should the axle fail the pulley frame will catch the rope.
- Quality high speed bearings.
- Stainless Steel construction.
- Weight: 303g.
- Size: 130mm x 70mm x 50mm.
- Independently tested by a NATA test facility to meet international standards for pulleys DIN EN 12278 (2007-08).
- Complies with Australian Standard 1891.2 fall arrest systems and devices.



© 2018, SafetyLink Pty Ltd, Australia.

**Patents:** SafetyLink Pty Ltd has a multitude of patents, patents pending, design applications, trademarks and copyrighted documents both lodged and issued. Should you wish to know the progress of our intellectual property on a specific product please email us on [ip@safetylink.com](mailto:ip@safetylink.com) and quote the product code.

Doc ID: MKT-229 Version: 8.0

Asia-Pacific/The Americas  
[info@safetylink.com](mailto:info@safetylink.com)

Europe/Africa/Middle East  
[europe.sales@safetylink.com](mailto:europe.sales@safetylink.com)

Northern Europe  
[uk.sales@safetylink.com](mailto:uk.sales@safetylink.com)



# SINGLE ROPE PULLEY

Stainless Steel Wheel | Product Code: REC.PULL007.02

SafetyLinks Single Rope Pulley is designed for use with high ropes activities. Examples being giant swing haul lines and vertical belay ropes on climbing activity's.

## INSTALLING OF SINGLE ROPE PULLEY

READ ALL OF THESE INSTRUCTIONS PRIOR TO INSTALLATION, SOMEONES LIFE MAY DEPEND ON IT. SINGLE ROPE PULLEY SHOULD ONLY BE INSTALLED BY A COMPETENT PERSON. SINGLE ROPE PULLEY SHOULD BE INSPECTED REGULARLY FOR DAMAGE, BY A COMPETENT PERSON AND REPLACED/REMOVED FROM SERVICE IF DAMAGE IS SUSPECTED.

Whilst in a safe work position install the SINGLE ROPE PULLEY into a suitable position so it will remain free from entanglement of users at all times.

1. The pulley should be anchored to a suitably rated anchor point for its intended use with a rated quicklink/karabiner or similar connector.
2. Ensure the pulley is anchored through both of the anchor holes on the side plates with the one connector. The connector used must be of a wide nature as to allow the pulley side plates to be loaded evenly.
3. The haul line/belay rope is to be threaded once only through the pulley. Ensure that the rope used is of the correct diameter and is rated for the intended purpose.
4. We recommend regular inspections for wear/damage and rotation of the pulley to aid in maximum lifespan.

As each pulley installation and user has different duty cycles it is recommended that an inspection should take place prior to each days use. A logged inspection should also be undertaken every six (6) months.

### Inspections should include checks for:

- a) Excessive sideways movement in the pulley wheel, this will indicate that the bearings may require replacement (Note: a small amount of movement will be present from new, this allows for expansion with heat).
- b) Sharp edges forming on the side plates, this indicates that the rope line maybe of the wrong diameter or the pulley has been loaded off centre.
- c) Ensure that the Axle bolt has not come loose. This is secured with a chemical lock.
- d) Stretching or cracking of the stainless steel side plates. This may take place around the axle bolt or attachment holes.

If any of the above is noticed during routine inspections then the pulley should be removed from service immediately. The pulley may only be returned to service once suitable repairs are made.

© 2018, SafetyLink Pty Ltd, Australia.

**Patents:** SafetyLink Pty Ltd has a multitude of patents, patents pending, design applications, trademarks and copyrighted documents both lodged and issued. Should you wish to know the progress of our intellectual property on a specific product please email us on [ip@safetylink.com](mailto:ip@safetylink.com) and quote the product code.

Doc ID: MKT-229 Version: 8.0

DATA SHEET

Asia-Pacific/The Americas  
[info@safetylink.com](mailto:info@safetylink.com)

Europe/Africa/Middle East  
[europe.sales@safetylink.com](mailto:europe.sales@safetylink.com)

Northern Europe  
[uk.sales@safetylink.com](mailto:uk.sales@safetylink.com)



SCAN ME

Online Shop  
[Heightsafety.com](https://heightsafety.com)



SCAN ME

Website  
[Safetylink.com](https://safetylink.com)