



SafetyLink is an innovative anchor company achieving success and keeping you safe whilst working at heights.

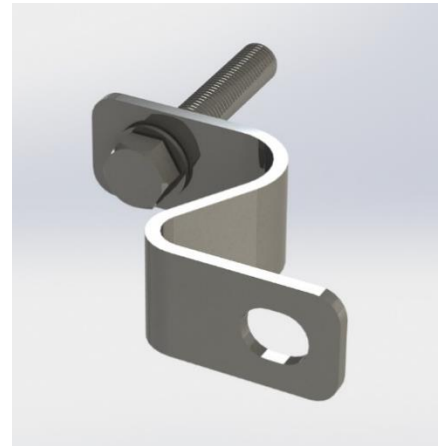
PRODUCT SHEET

WALL MOUNTED LIFELINE

Steel Mounted END Anchor | Product Code: STAT.WALLMT002



CEILING MOUNTED



WALL MOUNTED

- 🔍 Energy absorbing lifeline END anchor point.
- 🔍 Constructed entirely of stainless steel.
- 🔍 Intended for use with 8mm stainless steel cables.
- 🔍 Complies with AS/NZS 1891.2.

What am I used for?

A height safety system anchor point designed to be mounted overhead or on vertical face of wall or steel structure as part of a permanent horizontal lifeline system as attachment points for the cable to start and terminate at.

SafetyLink® Pty Ltd horizontal lifeline system has been designed with the same tapered principle as the SafetyLink Energy Absorbing Eyebolt. This feature ensures all End, Intermediate and Corner Anchors have the same energy absorbing capabilities, consequently incorporating the line energy absorbers into the system.

In addition to our energy absorbing tapered design we have a SafetyLink® S-Bend included with our end anchors. When arresting a fall the S-Bend absorbs energy while straightening out, and still retaining the strength in the line.

This simplistic approach has been developed to ensure our systems are installed with all the necessary energy absorbing components regardless of length. The building or structure for the anchorages should be assessed by an engineer, unless it is clear to a competent person that the structure is adequate.

- ⚠️ **MAXIMUM USER PER SYSTEM IS FOUR (4).**
- ⚠️ **MAXIMUM PERSON PER SPAN IS TWO (2).**
- ⚠️ **SEE SYSTEM INFORMATION FOR SITE SPECIFIC USE.**



PRODUCT COMPONENTS	QUANTITY
Washer: 16mm 316 Stainless Steel	2
S Cable End Support	1
Bolt: 16mm x 90mm 316 Stainless Steel	1
Nut: 16mm 316 Stainless Steel	1

Version 08.17



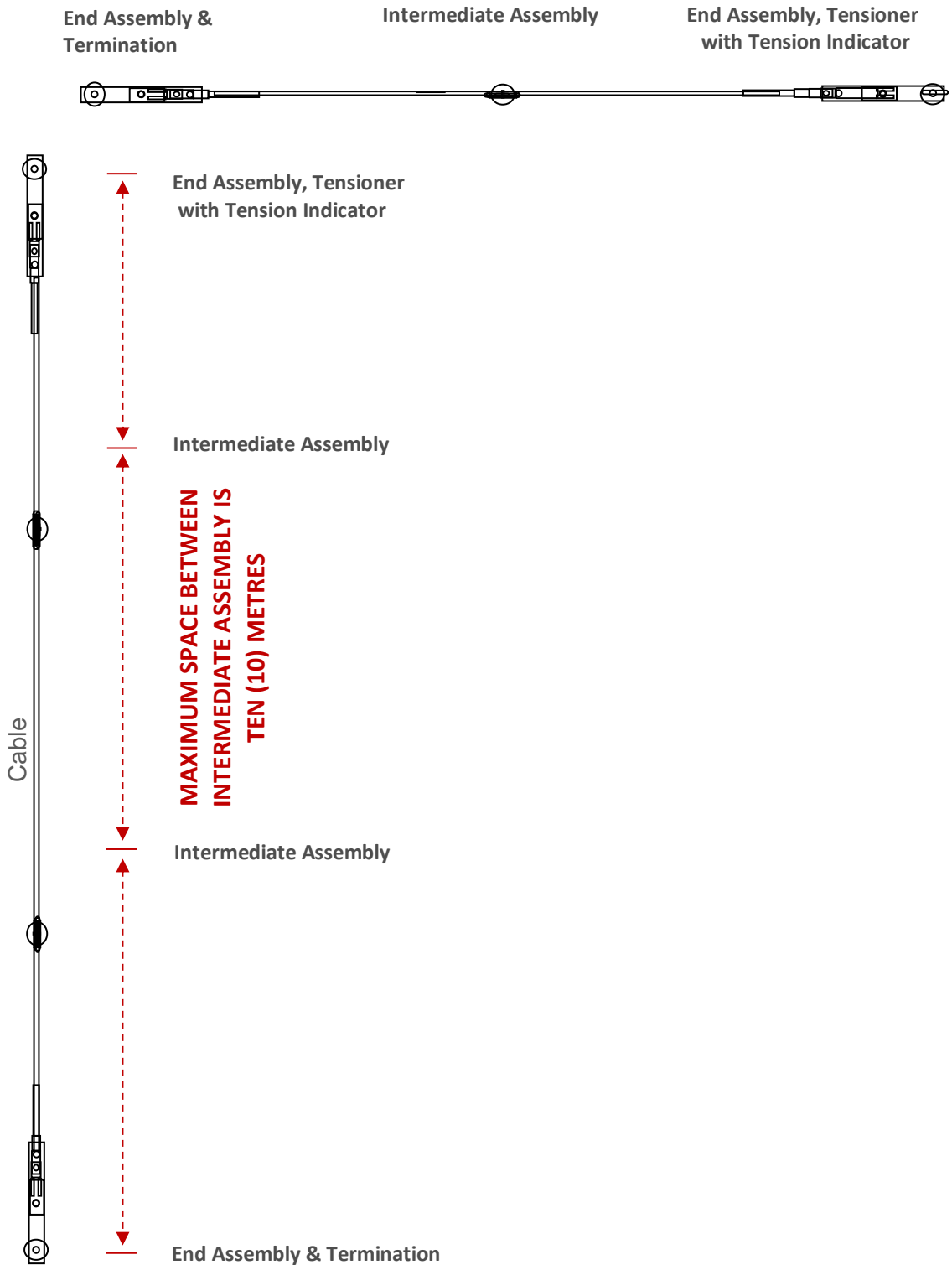
SafetyLink is an innovative anchor company achieving success and keeping you safe whilst working at heights.

PRODUCT SHEET

POSITIONING LAYOUT

This is a guide only

All working at heights safety procedures must be complied with when installing SafetyLink height safety systems. For more information refer to your state or territories current legislation, regulations, policies and codes of practices. Horizontal height safety lifelines must only be installed and used by competent people with relevant current height safety qualifications.



SAFETYLINK HEIGHT SAFETY SYSTEMS MUST ONLY BE INSTALLED AS PER OUR INSTALLATION GUIDES, TO STRUCTURES AS SPECIFIED IN THE INSTALLATION MANUAL FOR EACH PRODUCT. SHOULD ANY DOUBT EXIST IN REGARDS TO THE STRUCTURES INTEGRITY AN ENGINEER SHOULD BE CONSULTED.

Version 08.17



*SafetyLink is
an innovative
anchor
company
achieving
success
and keeping
you safe whilst
working at
heights.*

PRODUCT SHEET

COPYRIGHT TERMS AND CONDITIONS

Copyright in the material contained on this document belongs to SafetyLink Pty Ltd. You are authorised to reproduce this material subject to the following conditions:

1. No changes to the material may be made without SafetyLink Pty Ltd's prior written consent, which consent may be withheld, granted, or granted subject to conditions in SafetyLink Pty Ltd's discretion. Change includes any alteration, addition or deletion to the material or a part of the material that you reproduce.
2. You must ensure that any material you reproduce is marked "Copyright – SafetyLink Pty Ltd 2006".
3. Where you reproduce parts only of the material that must not cause the part reproduced to be misleading in any way or omit any important safety information.
4. You indemnify SafetyLink Pty Ltd against any claim arising out of your reproduction of the material on this document or any part of it.
5. SafetyLink Pty Ltd can terminate this authority to reproduce this material on seven (7) day's notice in writing to you at your last known business address, for any reason. You must return this document to SafetyLink Pty Ltd immediately after such a termination takes effect.

If you do not accept these conditions please return the document to SafetyLink Pty Ltd. Your retention of the document will otherwise be evidence of your acceptance of these conditions.

Patents

SafetyLink Pty Ltd has a multitude of patents, patents pending, design applications, trademarks and copyrighted documents both lodged and issued.

Should you wish to know the progress of our intellectual property on a specific product please email us on ip@heightsafety.com.au and quote the product code.

