



**Global
Rail System Catalogue
2026/2027**



SAFETYLINK

A DELTA PLUS GROUP COMPANY



HEIGHT SAFETY, ACCESS & FALL PROTECTION SYSTEMS

Established in 1998, SafetyLink has become a globally recognised leader in the design, manufacture and distribution of high-quality height safety systems.

Renowned for pioneering the first energy-absorbing anchor point, this innovative technology has since been integrated across the Frog range and extended into our anchor points, lifeline and rail systems, delivering enhanced safety performance across a wide range of applications.

All SafetyLink products are extensively tested to meet and exceed international industry standards. Testing is conducted across a wide range of real-world scenarios, ensuring our systems perform reliably beyond the laboratory. We test to European Standards EN795 and CEN/TS16415, Australian Standards AS/NZS 1891.4 and 5532 and USA Standards OSHA/ANSI 1926.502 and Z359.

About SafetyLink

SafetyLink takes working at heights seriously, providing comprehensive installation instructions and online training, supported with an experienced technical and design team. Our online platform enables easy access to our learning management system, product information and lifeline system builds all in the one place.

- Supply a large range of height safety systems that protect workers from the ground up
- All products tested and manufactured to current standards
- Access to online training modules 24/7
- Supply of installation guides and product data sheets
- Assisted system design layout and advice
- Extensive technical support with collectively over 100 years of experience in the height safety industry

Visit www.safetylink.com for the latest training, height safety resources and fall protection products.

Contents

X-RAIL HORIZONTAL RAIL SYSTEMS	5
X-RAIL FLOOR/OVERHEAD - CONCEALED FIX STEEL MOUNTED	6
X-RAIL FLOOR/OVERHEAD - SIDE FIX CONCRETE & STEEL MOUNTED	8
X-RAIL OVERHEAD BEAM - CONCEALED FIX.....	10
X-RAIL WALL MOUNTED - CONCEALED FIX STEEL MOUNTED	12
X-RAIL WALL MOUNTED - CONCEALED FIX STEEL MOUNTED	13
X-RAIL WALL MOUNTED - OFFSET FIX CONCRETE & STEEL MOUNTED	14
X-RAIL WALL MOUNTED - SIDE FIX CONCRETE & STEEL MOUNTED	16
X-RAIL SURFACE MOUNTED - METAL ROOF.....	18
X-RAIL FIXINGS & ACCESSORIES	20
X-RAIL TOOLS & SHUTTLES	22
X-RAIL ULTRA HORIZONTAL RAIL SYSTEM	25
ALTIRAIL RAIL SYSTEM	31
PERSONAL PROTECTIVE EQUIPMENT & SELF RETRACTING LIFELINES	35
SELF RETRACTING LIFELINES - EDGE.....	37
PPE - ROOFERS KITS.....	38
PPE - LANYARDS	40
PPE - HARNESSSES	41
TOOLS	44
RIVET TOOLS	45
STAHT ANCHOR & LINE TESTERS	46
HYDRAJAWS PULL TESTER.....	47
SERVICES	48
APPENDIX 1 - CONCRETE.....	48
APPENDIX 2 - CONCRETE CHEMICAL ADHESIVE	49
BIM CONTENT.....	50
TRAINING	51
EXPERT FALL PROTECTION PLANNING.....	52
NOTES.....	53
DELTA PLUS	54

X-Rail

SafetyLink's X-Rail is a Horizontal Rigid Rail System designed to provide continuous fall protection across a wide range of access scenarios, forming a complete engineered system for working at heights.

Key Features:

- Suitable for overhead, wall and floor installation configurations
- Supports up to four users per system in any span
- Can be used for live load applications such as abseiling
- Designed for situations with limited fall clearance
- Smooth-travelling shuttle eliminates the need for realignment
- Easily integrated into building structures for continuous movement
- Custom rail sections and corners available to suit project requirements
- Easy pull testing when installed into concrete
- Australian Made



SCAN ME

**X-RAIL INSTALLATION
HANDBOOK**



SCAN ME

**X-RAIL
WEBSITE**



SCAN ME

**SAFETY CENTRE
ONLINE TRAINING**





X-RAIL HORIZONTAL RAIL SYSTEMS

SafetyLink's X-Rail is a horizontal rigid rail system designed for continuous fall protection in complex access environments where flexibility, reliability and movement efficiency are critical. Engineered to support multiple users, the system enables smooth traversal along a permanently fixed rail using an innovative shuttle that maintains connection throughout the entire span without the need for reattachment or realignment.

The X-Rail can be installed in overhead, wall-mounted or floor-mounted configurations, making it suitable for a wide range of structural applications, including areas with limited fall clearance and live load requirements such as abseiling. Its design allows seamless integration into building structures while maintaining high performance under demanding conditions.

APPLICATION:

Horizontal access systems for building maintenance, industrial structures, and areas requiring continuous fall protection.

USE:

Suitable for multi-user fall arrest and abseiling (live load) applications where continuous movement and restricted clearance conditions exist.

STEEL MOUNTED

The SafetyLink X-Rail is a Rigid Anchor Line suitable for use as part of a personal fall protection system on Steel Structures with one or multiple mobile anchor points for attaching to. The X-Rail can be installed in three orientations; Overhead, Wall and Floor. Components listed for Floor/Overhead.

FIXINGS FOR CONCEALED FIX RAIL SYSTEM (refer to Fixings/Accessories Page)

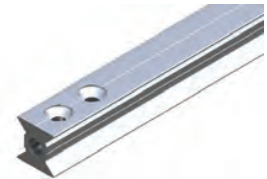
Product Code	Description	Weight (kg)
XRAIL-TR-043	Steel Fixing Kit	0.023
XRAIL-TR-907(OTS)	Rail Screw	0.009

XRAIL - RAIL

XRAIL-TR-101

- 3, 5 and 6 metre Aluminium Rail is used to extend rail line to required length.
- Pre drilled one end only, advise if both ends require hole drilled.

Components	Description	Material	Qty	Weight
XRAIL-TR-101-6M	Rail Length 6 metres - pre drilled one end only	Aluminium	1	11.87
XRAIL-TR-101-5M	Rail Length 5 metres - pre drilled one end only	Aluminium	1	9.890
XRAIL-TR-101-3M	Rail Length 3 metres - pre drilled one end only	Aluminium	1	5.937



XRAIL - END & INTERMEDIATE

XRAIL-TR-201

- End and Intermediate for X-Rail.

Components	Description	Material	Qty	Weight
XRAIL-TR-201	End & Intermediate Anchor (Concealed Fix)	Aluminium	1	0.115



XRAIL - END KIT (CONCEALED FIX)

XRAIL-TR-041

- System Termination Kit is installed at the end of the system and is designed to stop the rail sliding out.

Components	Description	Material	Qty	Weight
XRAIL-TR-201	End & Intermediate Anchor (Concealed Fix)	Aluminium	1	0.115
XRAIL-TR-006	Shuttle Stop	Aluminium	1	0.115
XRAIL-TR-008	System Termination Kit	Aluminium	1	0.188
XRAIL-TR-213	End Cap	Plastic	1	0.405
				1.228



- Custom bends available on request.



Got questions? Contact SafetyLink for more information.

1300 789 545

90 DEGREE FLOOR CORNER KIT (CONCEALED FIX)

XRAIL-TR-038

- 90 Degree Floor Corner is used to redirect rail line around corner.

Components	Description	Material	Qty	Weight
XRAIL-TR-104	Rail Corner, Bend 90 degrees (Floor Mounted)	Aluminium	1	1.292
XRAIL-TR-201	End & Intermediate Anchor (Concealed Fix)	Aluminium	4	0.115
XRAIL-TR-002	Rail Joint Kit	Aluminium	2	0.405
				2.562



45 DEGREE FLOOR CORNER KIT (CONCEALED FIX)

XRAIL-TR-039

- 45 Degree Floor Corner is used to redirect rail line around corner.

Components	Description	Material	Qty	Weight
XRAIL-TR-107	Rail Corner, Bend 45 degrees (Floor Mounted)	Aluminium	1	0.814
XRAIL-TR-201	End & Intermediate Anchor (Concealed Fix)	Aluminium	4	0.115
XRAIL-TR-002	Rail Joint Kit	Aluminium	2	0.405
				2.084



JOINT KIT (CONCEALED FIX)

XRAIL-TR-025

- Joint Kit is designed to join straight rail lengths together.

Components	Description	Material	Qty	Weight
XRAIL-TR-002	Rail Joint Kit	Aluminium	1	0.405
XRAIL-TR-201	End & Intermediate Anchor (Concealed Fix)	Aluminium	2	0.115
				0.635



EXPANSION JOINT KIT (CONCEALED FIX)

XRAIL-TR-044

- Expansion Joints offers a location where the line can expand or contract due to changes in the ambient temperature, preventing the rail from buckling.

Components	Description	Material	Qty	Weight
XRAIL-TR-236	Expansion Joint	Aluminium	1	1.565
XRAIL-TR-201	Intermediate Bracket (Concealed Fix)	Aluminium	4	0.115
XRAIL-TR-002	Rail Joint Kit	Aluminium	2	0.405
				2.835



INTERMEDIATE GATE, SHUTTLE ENTRY / EXIT KIT

XRAIL-TR-GATE.INT.KITCF

- The Shuttle Entry/Exit Gate offers a location on the Rigid Anchor Line where shuttles can be loaded and unloaded from the system.

Components	Description	Material	Qty	Weight
XRAIL-TR-GATE.INT	Intermediate Gate for Shuttle entry/exit	Aluminium	1	2.080
XRAIL-TR-201	End & Intermediate Anchor (Concealed Fix)	Aluminium	2	0.115
				2.378

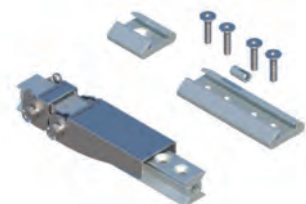


END GATE, SHUTTLE ENTRY / EXIT KIT

XRAIL-TR-GATE.KITCF

- The Shuttle Entry/Exit Gate offers a location on the Rigid Anchor Line where shuttles can be loaded and unloaded from the end of the system.

Components	Description	Material	Qty	Weight
XRAIL-TR-GATE	End Gate for Shuttle entry/exit	Aluminium	1	1.279
XRAIL-TR-002	Rail Joint Kit	Aluminium	1	0.405
XRAIL-TR-201	End & Intermediate Anchor (Concealed Fix)	Aluminium	1	0.115
				1.799



The SafetyLink X-Rail is a Rigid Anchor Line suitable for use as part of a personal fall protection system on Concrete and Steel Structures with one or multiple Mobile Anchor Points for attaching to.

The X-Rail can be installed in three orientations; Overhead, Wall and Floor. Components listed for Floor/Overhead.

FIXINGS FOR SIDE FIX RAIL SYSTEM (refer to Fixings/Accessories Page)

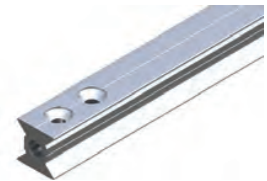
Product Code	Description	Weight (kg)
CON-M12x160-DONUT	Anchor Rod Kit_ M12x160mm	0.137
CON-CHEM-FISV.300	FIS V 300ml Cartridge	0.803
XRAIL-TR-012	Steel Fixing Kit	0.102
ADAPTER M12-M16	M12 to M16 Thread Retrofit Adapter	0.026

XRAIL - RAIL

XRAIL-TR-101

- 3, 5 and 6 metre Aluminium Rail is used to extend rail line to required length.
- Pre drilled one end only, advise if both ends require hole drilled.

Components	Description	Material	Qty	Weight
XRAIL-TR-101-6M	Rail Length 6 metres - pre drilled one end only	Aluminium	1	11.87
XRAIL-TR-101-5M	Rail Length 5 metres - pre drilled one end only	Aluminium	1	9.890
XRAIL-TR-101-3M	Rail Length 3 metres - pre drilled one end only	Aluminium	1	5.937



XRAIL - INTERMEDIATE (SIDE FIX)

XRAIL-TR-204

- End and Intermediate for X-Rail.

Components	Description	Material	Qty	Weight
XRAIL-TR-204	Intermediate Anchor (Side Fix)	Aluminium	1	0.219



XRAIL - END KIT (SIDE FIX)

XRAIL-TR-034

- System Termination Kit is installed at the end of the system and is designed to stop the rail sliding out.

Components	Description	Material	Qty	Weight
XRAIL-TR-203	End Bracket (Side Fix)	Aluminium	1	0.978
XRAIL-TR-006	Shuttle Stop	Aluminium	1	0.115
XRAIL-TR-008	System Termination Kit	Aluminium	1	0.188
XRAIL-TR-213	End Cap	Plastic	1	0.405
				2.091



- Custom bends available on request.



90 DEGREE FLOOR MOUNTED CORNER KIT (SIDE FIX)

XRAIL-TR-031

- 90 Degree Floor Corner is used to redirect rail line around corner.

Components	Description	Material	Qty	Weight
XRAIL-TR-104	Rail Corner, Bend 90 degrees (Floor Mounted)	Aluminium	1	1.292
XRAIL-TR-204	Intermediate Bracket (Side Fix)	Aluminium	4	0.219
XRAIL-TR-002	Rail Joint Kit	Aluminium	2	0.405
				2.978



45 DEGREE FLOOR CORNER KIT (SIDE FIX)

XRAIL-TR-032

- 45 Degree Floor Corner is used to redirect rail line around corner.

Components	Description	Material	Qty	Weight
XRAIL-TR-107	Rail Corner, Bend 45 degrees (Floor Mounted)	Aluminium	1	0.814
XRAIL-TR-204	Intermediate Bracket (Side Fix)	Aluminium	4	0.219
XRAIL-TR-002	Rail Joint Kit	Aluminium	2	0.405
				2.500



EXPANSION JOINT KIT (SIDE FIX)

XRAIL-TR-042

- Expansion Joint Kits offer a location where the line can expand or contract due to changes in the ambient temperature, preventing the rail from buckling.

Components	Description	Material	Qty	Weight
XRAIL-TR-236	Expansion Joint	Aluminium	1	1.565
XRAIL-TR-204	Intermediate Bracket (Side Fix)	Aluminium	4	0.219
XRAIL-TR-002	Rail Joint Kit	Aluminium	2	0.405
				3.251



JOINT KIT WITH INTERMEDIATE ANCHORS (SIDE FIX)

XRAIL-TR-022

- Joint Kit is designed to join straight rail lengths together.

Components	Description	Material	Qty	Weight
XRAIL-TR-002	Rail Joint Kit	Aluminium	1	0.405
XRAIL-TR-204	Intermediate Bracket (Side Fix)	Aluminium	2	0.219
				0.843



INTERMEDIATE GATE, SHUTTLE ENTRY / EXIT KIT

XRAIL-TR-GATE.INT.KITSF

- The Shuttle Entry/Exit Gate offers a location on the Rigid Anchor Line where shuttles can be loaded and unloaded from the system.

Components	Description	Material	Qty	Weight
XRAIL-TR-GATE.INT	Intermediate Gate for Shuttle entry/exit	Aluminium	1	2.070
XRAIL-TR-204	Intermediate Bracket (Side Fix)	Aluminium	2	0.978
				4.036



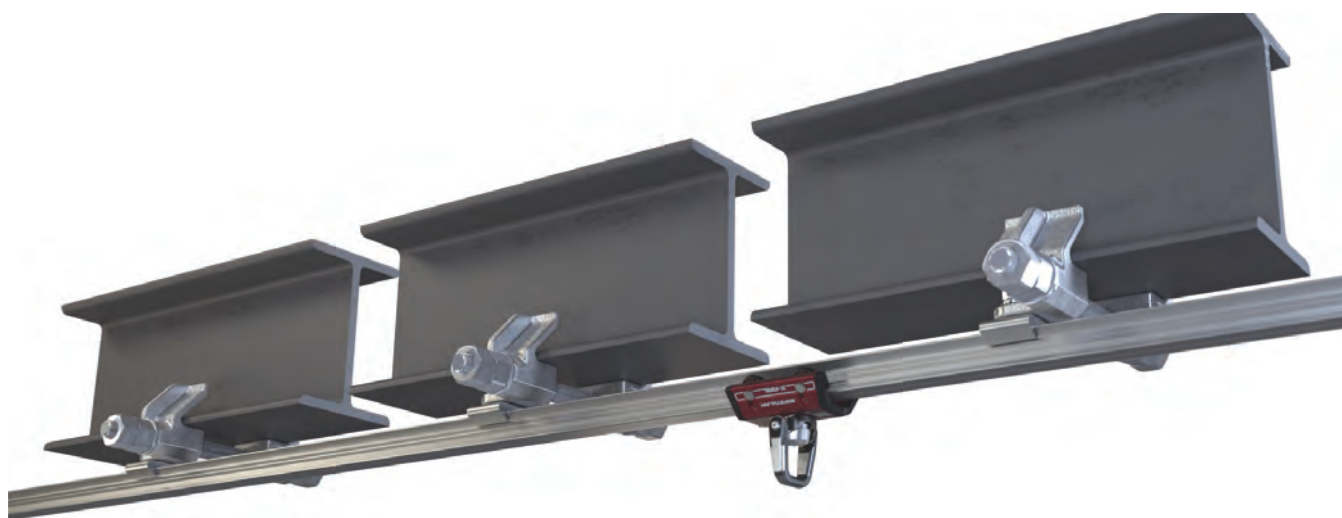
END GATE, SHUTTLE ENTRY / EXIT KIT

XRAIL-TR-GATE.KITSF

- The Shuttle Entry/Exit Gate offers a location on the Rigid Anchor Line where shuttles can be loaded and unloaded from the end of the system.

Components	Description	Material	Qty	Weight
XRAIL-TR-GATE	End Gate for Shuttle entry/exit	Aluminium	1	1.279
XRAIL-TR-002	Rail Joint Kit	Aluminium	1	0.405
XRAIL-TR-203	End Bracket (Side Fix)	Aluminium	1	0.978
				2.662





The SafetyLink X-Rail is a Rigid Anchor Line suitable for use as part of a personal fall protection OVERHEAD system on flanged beams like universal beams and columns and fabricated sections with one or multiple mobile anchor points for attaching to.

FIXINGS FOR BEAMLINK CONCEALED FIX RAIL SYSTEM (refer to Fixings/Accessories Page)

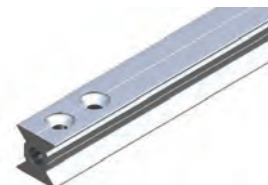
Product Code	Description	Weight (kg)
BEAMLINK001.160	BeamLink to suit Flange upto 160mm	5.736
BEAMLINK001.210	BeamLink to suit Flange upto 210mm	5.884
BEAMLINK001.285	BeamLink to suit Flange upto 285mm	6.122
BEAMLINK001.385	BeamLink to suit Flange upto 385mm	6.418

XRAIL - RAIL

XRAIL-TR-101

- 3, 5 and 6 metre Aluminium Rail is used to extend rail line to required length.
- Pre drilled one end only, advise if both ends require hole drilled.

Components	Description	Material	Qty	Weight
XRAIL-TR-101-6M	Rail Length 6 metres - pre drilled one end only	Aluminium	1	11.87
XRAIL-TR-101-5M	Rail Length 5 metres - pre drilled one end only	Aluminium	1	9.890
XRAIL-TR-101-3M	Rail Length 3 metres - pre drilled one end only	Aluminium	1	5.937



XRAIL - END & INTERMEDIATE

XRAIL-TR-201+BEAM_FIXINGS

- End and Intermediate for BeamLink X-Rail.

Components	Description	Material	Qty	Weight
XRAIL-TR-201	End & Intermediate Anchor	Aluminium	1	0.115
SCREW SKT-M12x45mm 316	Socket Head Countersunk Screw M12x45mm	316SS	1	0.045
WASHER M12_316	Washer: M12	316SS	1	0.003
WASHER M12_Spring_316	Spring Washer: M12	316SS	1	0.004
NUT M12_316	Nut: M12	316SS	1	0.016
XRAIL-TR-204	Intermediate Anchor (Side Fix)	Aluminium	1	0.219
				0.183



XRAIL - JOINT KIT (CONCEALED FIX)

XRAIL-TR-002

- Joint Kit is designed to join straight rail lengths together.

Components	Description	Material	Qty	Weight
XRAIL-TR-206	Rail Join (Available in kit TR-002)	Aluminium	1	0.219
XRAIL-TR-907(OTS)	M10 x 40 Countersunk Cap Screw	Aluminium	4	0.009
XRAIL-TR-212	Rail Dowel	Aluminium	1	0.150
				0.405



Got questions? Contact SafetyLink for more information.

1300 789 545

X-RAIL END KIT (CONCEALED FIX)

XRAIL-TR-041+BEAM_FIXINGS

- System Termination Kit is installed at the end of the system and is designed to stop the rail sliding out on BeamLink X-Rail.

Components	Description	Material	Qty	Weight
XRAIL-TR-201 +BEAM_FIXINGS	End & Intermediate Anchor	Aluminium	1	0.183
XRAIL-TR-006	Shuttle Stop	Aluminium	1	0.115
XRAIL-TR-008	System Termination Kit	Aluminium	1	0.188
XRAIL-TR-213	End Cap	Plastic	1	0.405
				1.228



END GATE, SHUTTLE ENTRY / EXIT KIT

XRAIL-TR-GATE.KITCF+BEAM_FIXING

- The Shuttle Entry/Exit Gate offers a location on the Rigid Anchor Line where shuttles can be loaded and unloaded from the system.

Components	Description	Material	Qty	Weight
XRAIL-TR-GATE	Gate for Shuttle entry/exit	Aluminium	1	1.279
XRAIL-TR-002	Rail Join Kit	Aluminium	1	0.405
XRAIL-TR-201 +BEAM_FIXINGS	End & Intermediate Anchor	Aluminium	1	0.183
				1.867



BEAMLINK - 160mm (CONCEALED FIX)

BEAMLINK001.160

- Structural flanged beam size upto 160mm.

Components	Description	Material	Qty	Weight
NUT M24_GAL	Nut: M24	Galvanized	4	0.179
WASHER M24_GAL	Washer: M24	Galvanized	2	0.034
BEAMLINK001.01	BeamLink Clamp End	Galvanized	2	1.923
WASHER M12_SHOULDER_NYLON	Washer: M12 Shoulder	Nylon	4	0.002
ROD-per metre M24-GAL	Threaded Rod: M24	Galvanized	0.37	1.098
				5.736



BEAMLINK - 210mm (CONCEALED FIX)

BEAMLINK001.210

- Structural flanged beam size upto 210mm.

Components	Description	Material	Qty	Weight
NUT M24_GAL	Nut: M24	Galvanized	4	0.179
WASHER M24_GAL	Washer: M24	Galvanized	2	0.034
BEAMLINK001.01	BeamLink Clamp End	Galvanized	2	1.923
WASHER M12_SHOULDER_NYLON	Washer: M12 Shoulder	Nylon	4	0.002
ROD-per metre M24-GAL	Threaded Rod: M24	Galvanized	0.42	1.098
				5.884



BEAMLINK - 285mm (CONCEALED FIX)

BEAMLINK001.285

- Structural flanged beam size upto 285mm.

Components	Description	Material	Qty	Weight
NUT M24_GAL	Nut: M24	Galvanized	4	0.179
WASHER M24_GAL	Washer: M24	Galvanized	2	0.034
BEAMLINK001.01	BeamLink Clamp End	Galvanized	2	1.923
WASHER M12_SHOULDER_NYLON	Washer: M12 Shoulder	Nylon	4	0.002
ROD-per metre M24-GAL	Threaded Rod: M24	Galvanized	0.50	1.098
				6.122



BEAMLINK - 385mm (CONCEALED FIX)

BEAMLINK001.385

- Structural flanged beam size upto 385mm.

Components	Description	Material	Qty	Weight
NUT M24_GAL	Nut: M24	Galvanized	4	0.179
WASHER M24_GAL	Washer: M24	Galvanized	2	0.034
BEAMLINK001.01	BeamLink Clamp End	Galvanized	2	1.923
WASHER M12_SHOULDER_NYLON	Washer: M12 Shoulder	Nylon	4	0.002
ROD-per metre M24-GAL	Threaded Rod: M24	Galvanized	0.60	1.098
				6.418



The SafetyLink X-Rail is a Rigid Anchor Line suitable for use as part of a personal fall protection system on Steel Structures.

FIXINGS FOR CONCEALED FIX RAIL SYSTEM (refer to Fixings/Accessories Page)

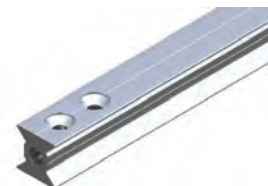
Product Code	Description	Weight (kg)
XRAIL-TR-043	Steel Fixing Kit	0.023
XRAIL-TR-907(OTS)	Rail Screw	0.009

XRAIL - RAIL

XRAIL-TR-101

- 3, 5 and 6 metre Aluminium Rail is used to extend rail line to required length.
- Pre drilled one end only, advise if both ends require hole drilled.

Components	Description	Material	Qty	Weight
XRAIL-TR-101-6M	Rail Length 6 metres - pre drilled one end only	Aluminium	1	11.87
XRAIL-TR-101-5M	Rail Length 5 metres - pre drilled one end only	Aluminium	1	9.890
XRAIL-TR-101-3M	Rail Length 3 metres - pre drilled one end only	Aluminium	1	5.937



XRAIL - END & INTERMEDIATE (CONCEALED FIX)

XRAIL-TR-201

- End and Intermediate for X-Rail.

Components	Description	Material	Qty	Weight
XRAIL-TR-201	End & Intermediate Anchor (Concealed Fix)	Aluminium	1	0.115



GATE, SHUTTLE ENTRY-EXIT KIT (CONCEALED FIX)

XRAIL-TR-GATE.KITCF

- The Shuttle Entry/Exit Gate offers a location on the Rigid Anchor Line where shuttles can be loaded and removed from the system.

Components	Description	Material	Qty	Weight
XRAIL-TR-GATE	Gate for Shuttle entry/exit	Aluminium	1	1.279
XRAIL-TR-002	Rail Join Kit	Aluminium	1	0.405
XRAIL-TR-201	End & Intermediate Anchor (Concealed Fix)	Aluminium	1	0.115
				1.228



- Custom bends available on request.



Got questions? Contact SafetyLink for more information.

1300 789 545

90 DEGREE EXTERNAL WALL CORNER KIT

XRAIL-TR-023

- 90 Degree Corner Kit is used to redirect rail line on an external wall.

Components	Description	Material	Qty	Weight
XRAIL-TR-201	End & Intermediate Anchor (Concealed Fix)	Aluminium	8	0.115
XRAIL-TR-005	Rail Join Kit (Low Profile)	316SS	2	0.300
XRAIL-TR-105	Rail Corner, 90 degrees (External Wall Mounted)	Aluminium	1	1.293
XRAIL-TR-110	Standard Rail Corner, Bend JOG	Aluminium	2	1.121
XRAIL-TR-235	Jog Offset Bracket (Concealed Fix)	316SS	4	1.121
BOLT-M12x35mm-SS	M12 x 35mm Bolt	316SS	4	0.042
FASTENERS M12	M12 Nut, Washer, Spring Washer	316SS	4	0.023
XRAIL-TR-002	Rail Join Kit	Aluminium	2	0.405
				10.60



45 DEGREE EXTERNAL WALL CORNER KIT

XRAIL-TR-024

- 45 Degree Corner Kit is used to redirect rail line on an external wall.

Components	Description	Material	Qty	Weight
XRAIL-TR-201	End & Intermediate Anchor (Concealed Fix)	Aluminium	8	0.115
XRAIL-TR-005	Rail Join Kit (Low Profile)	316SS	2	0.300
XRAIL-TR-108	Rail Corner, 45 degrees (External Wall Mounted)	Aluminium	1	0.814
XRAIL-TR-110	Standard Rail Corner, Bend JOG	Aluminium	2	1.121
XRAIL-TR-235	Jog Offset Bracket (Concealed Fix)	316SS	4	1.121
BOLT-M12x35mm-SS	M12 x 35mm Bolt	316SS	4	0.042
FASTENERS M12	M12 Nut, Washer, Spring Washer	316SS	4	0.023
XRAIL-TR-002	Rail Join Kit	Aluminium	2	0.405
				10.13



90 DEGREE INTERNAL WALL CORNER KIT

XRAIL-TR-035

- 90 Degree Corner Kit is used to redirect rail line on an internal wall.

Components	Description	Material	Qty	Weight
XRAIL-TR-201	Conceal Fix End and Intermediate Bracket	Aluminium	4	0.115
XRAIL-TR-106	Rail Corner, 90 degrees (Internal Wall Mounted)	Aluminium	1	1.292
XRAIL-TR-002	End & Intermediate Anchor (Concealed Fix)	Aluminium	2	0.405
				6.098



45 DEGREE INTERNAL WALL CORNER KIT

XRAIL-TR-036

- 45 Degree Corner Kit is used to redirect rail line on an internal wall.

Components	Description	Material	Qty	Weight
XRAIL-TR-201	End & Intermediate Anchor (Concealed Fix)	Aluminium	4	0.115
XRAIL-TR-109	Rail Corner, 45 degrees (Internal Wall Mounted)	Aluminium	1	0.814
XRAIL-TR-002	Rail Join Kit	Aluminium	2	0.405
				4.181



END KIT (CONCEALED FIX)

XRAIL-TR-041

- System Termination Kit is installed at the end of the system and is designed to stop the rail and shuttle sliding out.

Components	Description	Material	Qty	Weight
XRAIL-TR-201	End & Intermediate Anchor (Concealed Fix)	Aluminium	1	0.115
XRAIL-TR-006	Shuttle Stop	Aluminium	1	0.115
XRAIL-TR-008	System Termination Kit	Aluminium	1	0.188
XRAIL-TR-213	End Cap	Plastic	1	0.405
				1.228



JOINT KIT WITH INTERMEDIATE & END ANCHORS

XRAIL-TR-025

- Join Kit is designed to join straight rail lengths together.

Components	Description	Material	Qty	Weight
XRAIL-TR-002	Rail Join Kit	Aluminium	1	0.405
XRAIL-TR-201	End & Intermediate Anchor (Concealed Fix)	Aluminium	2	0.115
				0.635



The SafetyLink X-Rail is a Rigid Anchor Line suitable for use as part of a personal fall protection system on Concrete and Steel Structures. The X-Rail offers a horizontal Rigid Anchor Line with one or multiple Mobile Anchor Points for attaching to.

FIXINGS FOR CONCEALED FIX RAIL SYSTEM (refer to Fixings/Accessories Page)

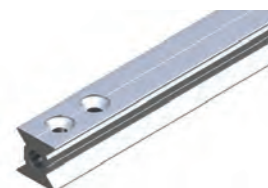
Product Code	Description	Weight (kg)
ADAPTER M12-M16	M12 to M16 Thread Retrofit Adapter	0.026
CON-M12x160-DONUT	Anchor Rod Kit_ M12x160mm	0.137
CON-CHEM-FISV.300	FIS V 300ml Cartridge	0.803
XRAIL-TR-012	Steel Fixing Kit	0.102
XRAIL-TR-043	Steel Fixing Kit	0.023

XRAIL - RAIL

XRAIL-TR-101

- 3, 5 and 6 metre Aluminium Rail is used to extend rail line to required length.
- Pre drilled one end only, advise if both ends require hole drilled.

Components	Description	Material	Qty	Weight
XRAIL-TR-101-6M	Rail Length 6 metres - pre drilled one end only	Aluminium	1	11.87
XRAIL-TR-101-5M	Rail Length 5 metres - pre drilled one end only	Aluminium	1	9.890
XRAIL-TR-101-3M	Rail Length 3 metres - pre drilled one end only	Aluminium	1	5.937



GATE, SHUTTLE ENTRY-EXIT KIT (OFFSET FIX)

XRAIL-TR-GATE.KITOF

- The Shuttle Entry/Exit Gate offers a location on the Rigid Anchor Line where shuttles can be loaded and unloaded from the system.

Components	Description	Material	Qty	Weight
XRAIL-TR-GATE	Gate for Shuttle entry/exit	Aluminium	1	1.279
XRAIL-TR-002	Rail Join Kit	Aluminium	1	0.405
XRAIL-TR-230	Intermediate and End Bracket (Offset Fix)	Aluminium	1	0.978
				2.662



X-RAIL INTERMEDIATE JOIN KIT (OFFSET FIX)

XRAIL-TR-051

- Intermediate Join Kit is used to join horizontal wall mounted rail systems.

Components	Description	Material	Qty	Weight
XRAIL-TR-230	Rail Intermediate Bracket (Offset Fix)	Aluminium	2	0.978
XRAIL-TR-002	Rail Join Kit	Aluminium	1	0.405
				2.361



- Custom bends available on request.



X-RAIL END KIT

XRAIL-TR-052

- X-Rail End Kit is used to cap off end of rail line.

Components	Description	Material	Qty	Weight
XRAIL-TR-230	Intermediate and End Bracket (Offset Fix)	Aluminium	1	0.978
XRAIL-TR-006	Shuttle Stop	Aluminium	1	0.115
XRAIL-TR-008	System Termination Kit	Aluminium	1	0.188
XRAIL-TR-213	Rail End Cap	Aluminium	1	0.012
				3.458



90 DEGREE WALL MOUNTED EXTERNAL CORNER KIT

XRAIL-TR-053

- 90 Degree Corner Kit is used to redirect wall mounted horizontal rail systems.

Components	Description	Material	Qty	Weight
XRAIL-TR-231	Rail Intermediate Join Bracket (Offside Fix)	Aluminium	2	0.978
XRAIL-TR-907(OTS)	M10 x 40 Countersunk Cap Screw	Aluminum	16	0.009
XRAIL-TR-212	Rail Join Dowel	316SS	4	0.150
XRAIL-TR-105	Rail Corner, 90 degrees (External Wall Mounted)	Aluminium	1	1.293
XRAIL-TR-110	Standard Rail Corner, Bend JOG	Aluminium	2	1.121
XRAIL-TR-232	Rail Intermediate Join Bracket (Offside Fix)	Aluminium	2	0.978
XRAIL-TR-234	External Corner Bracket (Offset Fix)	Aluminium	2	1.121
BOLT-M12x35mm-SS	M12 x 35mm Bolt	316SS	4	0.042
FASTENERS M12	M12 Nut, Washer, Spring Washer	316SS	4	0.023
				10.69



45 DEGREE WALL MOUNTED EXTERNAL CORNER KIT

XRAIL-TR-054

- 45 Degree Corner Kit is used to redirect wall mounted horizontal rail systems.

Components	Description	Material	Qty	Weight
XRAIL-TR-231	Rail Intermediate Join Bracket (Offside Fix)	Aluminium	2	0.978
XRAIL-TR-907(OTS)	M10 x 40 Countersunk Cap Screw	Aluminum	16	0.009
XRAIL-TR-212	Rail Join Dowel	316SS	4	0.150
XRAIL-TR-108	Rail Corner, 45 degrees (External Wall Mounted)	Aluminium	1	0.814
XRAIL-TR-110	Standard Rail Corner, Bend JOG	Aluminium	2	1.121
XRAIL-TR-232	Rail Intermediate Join Bracket (Offside Fix)	Aluminium	2	0.978
XRAIL-TR-234	External Corner Bracket (Offset Fix)	Aluminium	2	1.121
BOLT-M12x35mm-SS	M12 x 35mm Bolt	316SS	4	0.042
FASTENERS M12	M12 Nut, Washer, Spring Washer	316SS	4	0.023
				10.21



90 DEGREE WALL MOUNTED INTERNAL CORNER KIT

XRAIL-TR-056

- 90 Degree Corner Kit is used to redirect wall mounted horizontal rail systems.

Components	Description	Material	Qty	Weight
XRAIL-TR-231	Rail Intermediate Join Bracket (Offside Fix)	Aluminium	2	0.978
XRAIL-TR-907(OTS)	M10 x 40 Countersunk Cap Screw	Aluminum	8	0.009
XRAIL-TR-212	Rail Join Dowel	316SS	2	0.150
XRAIL-TR-106	Rail Corner, 90 degrees (Internal Wall Mounted)	Aluminium	1	1.293
				3.621



45 DEGREE WALL MOUNTED INTERNAL CORNER KIT

XRAIL-TR-057

- Join Kit is designed to join straight rail lengths together.

Components	Description	Material	Qty	Weight
XRAIL-TR-231	Rail Intermediate Join Bracket (Offside Fix)	Aluminium	2	0.978
XRAIL-TR-907(OTS)	M10 x 40 Countersunk Cap Screw	Aluminum	8	0.009
XRAIL-TR-212	Rail Join Dowel	316SS	2	0.150
XRAIL-TR-109	Rail Corner, 45 degrees (Internal Wall Mounted)	Aluminium	1	0.814
				3.142



The SafetyLink X-Rail is a Rigid Anchor Line suitable for use as part of a personal fall protection system on Concrete and Steel Structures. The X-Rail offers a Horizontal Rigid Anchor Line with one or multiple Mobile Anchor Points for attaching to. The X-Rail can be installed in three orientations; Overhead, Wall and Floor. Components listed for Wall.

FIXINGS FOR SIDE FIX RAIL SYSTEM (refer to Fixings/Accessories Page)

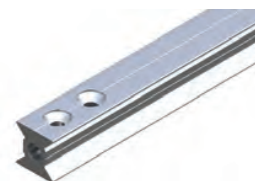
Product Code	Description	Weight (kg)
CON-M12x160-DONUT	Anchor Rod Kit_ M12x160mm	0.137
CON-CHEM-FISV.300	FIS V 300ml Cartridge	0.803
XRAIL-TR-012	Steel Fixing Kit	0.102
ADAPTER M12-M16	M12 to M16 Thread Retrofit Adapter	0.026

XRAIL - RAIL

XRAIL-TR-101

- 3, 5 and 6 metre aluminium rail is used to extend rail line to required length.
- Pre drilled one end only, advise if both ends require hole drilled.

Components	Description	Material	Qty	Weight
XRAIL-TR-101-6M	Rail Length 6 metres - pre drilled one end only	Aluminium	1	11.87
XRAIL-TR-101-5M	Rail Length 5 metres - pre drilled one end only	Aluminium	1	9.890
XRAIL-TR-101-3M	Rail Length 3 metres - pre drilled one end only	Aluminium	1	5.937



JOINT KIT WITH INTERMEDIATE ANCHORS (SIDE FIX)

XRAIL-TR-022

- Join Kit is designed to join straight rail lengths together.

Components	Description	Material	Qty	Weight
XRAIL-TR-002	Rail Join Kit (Side Fix)	Aluminium	1	0.405
XRAIL-TR-204	Intermediate Bracket (Side Fix)	Aluminium	2	0.219
				0.843



X-RAIL INTERMEDIATE BRACKET (SIDE FIX)

XRAIL-TR-204

- Intermediate Bracket is used for both concrete and steel mounted systems.

Components	Description	Material	Qty	Weight
XRAIL-TR-204	Intermediate Anchor (Side Fix)	Aluminium	1	0.219



- Custom bends available on request.

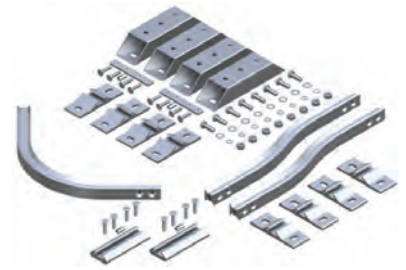


90 DEGREE EXTERNAL WALL CORNER KIT (SIDE FIX)

XRAIL-TR-020

- 90 Degree Corner Kit is used to redirect rail line on an external wall.

Components	Description	Material	Qty	Weight
XRAIL-TR-204	Intermediate Bracket (Side Fix)	Aluminium	8	0.219
XRAIL-TR-005	Rail Join Kit (Low Profile)	316SS	2	0.300
XRAIL-TR-105	Rail Corner, 90 degrees (External Wall Mounted)	Aluminium	1	1.293
XRAIL-TR-110	Standard Rail Corner, Bend JOG	Aluminium	2	1.121
XRAIL-TR-216	Jog Offset Bracket (Side Fix)	316SS	4	1.121
BOLT-M12x35mm-SS	M12 x 35mm Bolt	316SS	8	0.042
FASTENERS M12	M12 Nut, Washer, Spring Washer	316SS	8	0.023
XRAIL-TR-002	Rail Join Kit	Aluminium	2	0.405
				11.70

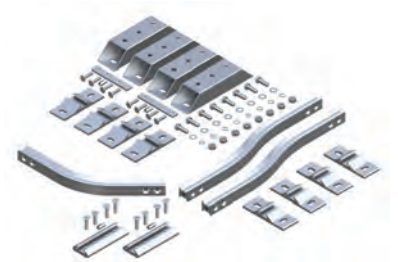


45 DEGREE EXTERNAL WALL CORNER KIT (SIDE FIX)

XRAIL-TR-021

- 45 Degree Corner Kit is used to redirect rail line on an external wall.

Components	Description	Material	Qty	Weight
XRAIL-TR-204	Intermediate Bracket (Side Fix)	Aluminium	8	0.219
XRAIL-TR-005	Rail Join Kit (Low Profile)	316SS	2	0.300
XRAIL-TR-108	Rail Corner, 45 degrees (External Wall Mounted)	Aluminium	1	0.814
XRAIL-TR-110	Standard Rail Corner, Bend JOG	Aluminium	2	1.121
XRAIL-TR-216	Jog Offset Bracket (Side Fix)	316SS	4	1.121
BOLT-M12x35mm-SS	M12 x 35mm Bolt	316SS	8	0.042
FASTENERS M12	M12 Nut, Washer, Spring Washer	316SS	8	0.023
XRAIL-TR-002	Rail Join Kit	Aluminium	2	0.405
				11.22



90 DEGREE INTERNAL WALL CORNER KIT (SIDE FIX)

XRAIL-TR-028

- 90 Degree Corner Kit is used to redirect rail line on an external wall.

Components	Description	Material	Qty	Weight
XRAIL-TR-204	Intermediate Bracket (Side Fix)	Aluminium	4	0.219
XRAIL-TR-106	Rail Corner, 90 degrees (Internal Wall Mounted)	Aluminium	1	1.292
XRAIL-TR-002	Rail Join Kit	Aluminium	2	0.405
				6.197



45 DEGREE INTERNAL WALL CORNER KIT (SIDE FIX)

XRAIL-TR-029

- 45 Degree Corner Kit is used to redirect rail line on an external wall.

Components	Description	Material	Qty	Weight
XRAIL-TR-204	Intermediate Bracket (Side Fix)	Aluminium	4	0.219
XRAIL-TR-109	Rail Corner, 45 degrees (Internal Wall Mounted)	Aluminium	1	0.814
XRAIL-TR-002	Rail Join Kit	Aluminium	2	0.405
				4.285



X-RAIL END KIT (SIDE FIX)

XRAIL-TR-034

- System Termination Kit is installed at the end of the system and is designed to stop the rail sliding out.

Components	Description	Material	Qty	Weight
XRAIL-TR-203	End Bracket (Side Fix)	Aluminium	1	0.978
XRAIL-TR-006	Shuttle Stop	Aluminium	1	0.115
XRAIL-TR-008	System Termination Kit	Aluminium	1	0.188
XRAIL-TR-213	End Cap	Plastic	1	0.405
				0.291



X-RAIL GATE, SHUTTLE ENTRY-EXIT KIT (SIDE FIX)

XRAIL-TR-GATE.KITSF

- The Shuttle Entry/Exit Gate offers a location on the Rigid Anchor Line where shuttles can be loaded and unloaded from the end of the system.

Components	Description	Material	Qty	Weight
XRAIL-TR-GATE	End Gate for Shuttle entry/exit	Aluminium	1	1.279
XRAIL-TR-002	Rail Join Kit	Aluminium	1	0.405
XRAIL-TR-203	End Bracket (Side Fix)	Aluminium	1	0.978
				2.662



The SafetyLink X-Rail is a Rigid Anchor Line suitable for use as part of a personal fall protection system on metal roof sheets. The X-Rail offers a horizontal Rigid Anchor Line with one or multiple Mobile Anchor Points for attaching to.

FIXINGS FOR SURFACE MOUNTED RAIL SYSTEM (refer to Fixings/Accessories Page)

Product Code	Description	Weight (kg)
S5_Z_BRACKET	Standing Seam S-5 Z Clamp	0.217
S5_S_BRACKET	Standing Seam S-5 S Clamp	0.177
RIVET-8MM+FOAM	Tri-fold Rivet: 8mm (Green Seal) with 40 x 40 EPDM Foam Tape	0.008

XRAIL - SURFACE MOUNTED RAIL

XRAIL-TR-102-3M

- 3 metre Aluminium Rail is used to extend rail line to required length.
- Pre drilled one end only, advise if both ends require hole drilled.

Components	Description	Material	Qty	Weight
XRAIL-TR-102-3M	Rail Length 3 metres	Aluminium	1	10.24



X-RAIL END CAP

XRAIL-TR-213

- End Cap is used to cap off end of rail line.

Components	Description	Material	Qty	Weight
XRAIL-TR-213	End Cap	Plastic	1	0.012



X-RAIL RAIL JOIN KIT (LOW PROFILE)

XRAIL-TR-005

- Joiner Kit concealed version is designed to join straight rail lengths together but remain hidden from sight.

Components	Description	Material	Qty	Weight
XRAIL-TR-211	Rail Connector	316SS	1	0.114
XRAIL-TR-907(OTS)	M10 x 40 Countersunk Cap Screw	316SS	4	0.009
XRAIL-TR-212	Rail Dowel	Aluminium	1	0.150
				0.300



Got questions? Contact SafetyLink for more information.

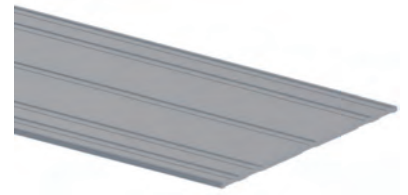
1300 789 545

X-RAIL SURFACE MOUNTED CROSS PLATE

XRAIL-TR-210

- Cross Plate is required when installing rail along the roof line.

Components	Description	Material	Qty	Weight
XRAIL-TR-210-300	Surface Mounted Plate 300mm	Aluminium	1	0.388
XRAIL-TR-210-400	Surface Mounted Plate 400mm	Aluminium	1	0.518
XRAIL-TR-210-500	Surface Mounted Plate 500mm	Aluminium	1	0.647
XRAIL-TR-210-600	Surface Mounted Plate 600mm	Aluminium	1	0.776

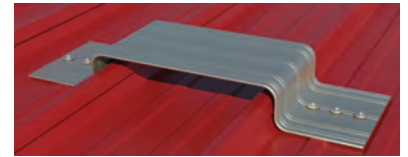


SURFACE MOUNTED CROSS PLATE (STANDING SEAM)

XRAIL-TR-210-SIZE

- Cross Plates for Standing Seam roof profiles.

Components	Description	Material	Qty	Weight
XRAIL-TR-210-50-SS	Standing Seam Cross Plate 630mm (Height 50mm)	Aluminium	1	1.076
XRAIL-TR-210-70-SS	Standing Seam Cross Plate 630mm (Height 70mm)	Aluminium	1	1.076



X-RAIL 90 DEGREE FLOOR CORNER

XRAIL-TR-104

- 90 Degree Floor Corner is used to redirect rail line around corner.

Components	Description	Material	Qty	Weight
XRAIL-TR-104	Rail Corner, Bend 90 degrees (Floor Mounted)	Aluminium	1	1.292

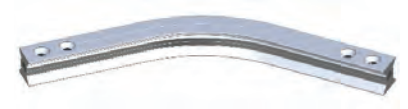


X-RAIL 45 DEGREE FLOOR CORNER

XRAIL-TR-107

- 45 Degree Floor Corner is used to redirect rail line around corner.

Components	Description	Material	Qty	Weight
XRAIL-TR-107	Rail Corner, Bend 45 degrees (Floor Mounted)	Aluminium	1	0.814



X-RAIL GATE

XRAIL-TR-GATE.KITSM

- X-Rail Gate: entry/exit for shuttle.

Components	Description	Material	Qty	Weight
XRAIL-TR-GATE-SURFACE	XRAIL Surface Gate, Shuttle Entry-Exit	Aluminium	1	5.400
XRAIL-TR-005	Rail Join Kit (Concealed)	316SS	1	0.300
				5.700



X-RAIL SHUTTLE STOP

XRAIL-TR-006

- Shuttle Stop is designed to stop the shuttle from being removed.

Components	Description	Material	Qty	Weight
XRAIL-TR-006	Shuttle Stop	Aluminium	1	Set Only
SCREW CAP M10X30	Screw: M10 x 30mm Button Head Cap	316SS	1	Set Only
WASHER M10_316	Washer: M10	316SS	1	Set Only



0.115

X-RAIL CONCRETE STUD FIXING KIT

CON-M12X160-XDONUT

- Concrete Stud Fixings are used for fixing rail line to concrete structures.

Components	Description	Material	Qty	Weight
ROD-M12x160	Anchor Rod M12 x 160mm	316SS	1	0.200
NUT M12 XRAIL DONUT	M12 XRAIL Donut	316SS	1	0.028
WASHER M12 Spring_316	M12 Spring Washer	316SS	1	0.011
WASHER M12_316	M12 Washer	316SS	1	0.029
				0.143



X-RAIL STEEL FIXING KIT

XRAIL-TR-012

- Steel Fixing Kit is used for fixing rail line to steel structures.

Components	Description	Material	Qty	Weight
BOLT-M12x50mm-SS	M12 x 50mm Bolt ***TO BE CONFIRMED	316SS	1	0.053
NUT M12_316	M12 Nut	316SS	1	0.016
WASHER M12 Spring_316	M12 Spring Washer	316SS	1	0.004
WASHER M12_316	M12 Washer	316SS	1	0.003
				0.076



X-RAIL STEEL FIXING KIT (CONCEALED FIX)

XRAIL-TR-043

- Steel Fixing Kit is used for fixing rail line to steel structures.

Components	Description	Material	Qty	Weight
SCREW SKT-M12x40mm 316	Sockethead Countersunk Screw M12 x 40mm	316SS	1	0.048
NUT M12_316	M12 Nut	316SS	1	0.016
WASHER M12 Spring_316	M12 Spring Washer	316SS	1	0.004
WASHER M12_316	M12 Washer	316SS	1	0.003
				0.061



Got questions? Contact SafetyLink for more information.

1300 789 545

X-RAIL SURFACE MOUNT FIXING KIT

RIVET-8MM+FOAM

- Surface Mounted Fixings are used for fixing rail line to metal roof sheets.

Components	Description	Material	Qty	Weight
RIVET_8mm(27.7)	Rivet: 8mm Tri-fold	Aluminium	1	0.007
FOAM-TAPE-SQUARE	40 x 40 EPDM Foam Tape	Foam	1	0.001



SL CLAMP KL700

SL CLAMP.KL700

- SL Clamp KL700 are used for fixing rail line to standing seam roof sheets.

Components	Description	Material	Qty	Weight
SL CLAMP.KL700	SL Clamp KL 700	Aluminium	1	0.217



X-RAIL STANDING SEAM S5-Z CLAMPS

S5_Z_BRACKET

- S5-Z Clamps are used for fixing rail line to standing seam roof sheets.

Components	Description	Material	Qty	Weight
S5_Z_BRACKET	S-5 Z Clamp (Clamp, Insert, Bolt, 2 Setscrews)	Aluminium	1	0.217



X-RAIL STANDING SEAM S5-S CLAMPS

S5_S_BRACKET

- S5-S Clamps are used for fixing rail line to standing seam roof sheets.

Components	Description	Material	Qty	Weight
S5_S_BRACKET	S-5 S Clamp (Clamp, Bolt, 2 x Setscrews)	Aluminium	1	0.177



STELLINK BLIND FASTENER - M12 HEX 70.15

STELLINK-M12.KT.70.15

- SteelLink Blind Fasteners are used for concealed fixing rail to steel structures.

Components	Description	Material	Qty	Weight
SCREW SKT-M12x70mm 316	Bolt: M12x70mm Socket Head Countersunk	316SS	1	0.059
STELLINK-M12.01	End Cap: SteelLink M12	316SS	1	0.020
STELLINK-M12.02	Base Cap: SteelLink M12	316SS	1	0.033
				0.112



X-RAIL ADAPTER M12-M16

ADAPTER M12-M16

- X-Rail M12 to M16 Thread Retrofit Adapter.

Components	Description	Material	Qty	Weight
ADAPTER M12-M16	M12 to M16 Threaded Retrofit Adapter	316SS	1	0.026



CONCRETE STUD ADHESIVE

CON-CHEM-FISV.300

- Fischer FIS V 300T Injection Mortar is the ideal chemical adhesive to use when installing SafetyLink height safety systems.
- The injection cartridge is for use with a standard caulking gun.
- Partially used cartridges can be re-used by changing the mixing nozzle.

Components	Description	Material	Qty	Weight
CON-CHEM-FISV.300.01	Concrete FIS V 300ml Cartridge	Mortar	1	0.603
CON-CHEM-FISMR	Static Mixer FIS MR	Plastic	2	0.010



0.623

enjoy safety.

X-RAIL DRILL ON-SITE FIXTURE

XRAIL-TR-402

- X-Rail On-Site Drill Fixture.

Components	Description	Material	Qty	Weight
XRAIL-TR-402	XRAIL On-site Drill Fixture	Metal	1	0.492



X-RAIL DRILL BIT

XRAIL-TR-401

- Rail Drill Bit is used to drill holes in required location for rail line.

Components	Description	Material	Qty	Weight
XRAIL-TR-401	Drill Bit	HSS	1	0.130

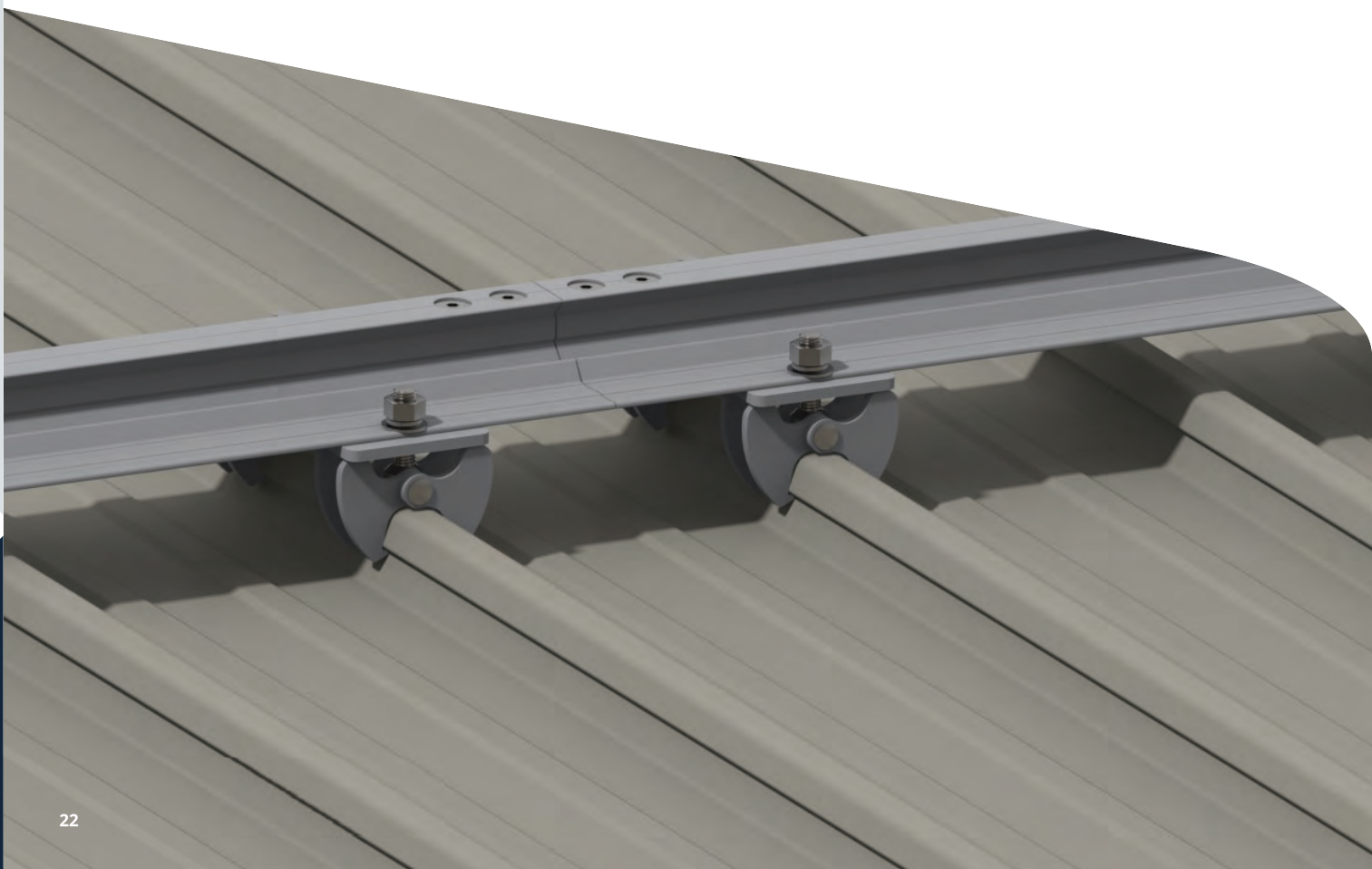


CONCRETE PULL TEST ADAPTER

DONUTLINK-ADP

- Concrete Pull Test Adapter is used to pull test concrete fixings on rail line.

Components	Description	Material	Qty	Weight
DONUTLINK-ADP	DonutLink Adapter	Hardened/ Tempered Steel	1	0.550



X-RAIL SHUTTLE

XRAIL-TR-011

- The X-Rail Shuttle allows for seamless movement along X-Rail Rigid Anchor Line.
- X-Rail Shuttle is used for Fall Arrest and Abseiling.
- Tested for 15kN, rated for one user.
- Tested to work in a multitude of directions, see installation guides for area of use.
- X-Rail Shuttle comes with stopper to maintain shuttle position stable during abseiling.
- Compliant with AS/NZS 1891.2, EN795:2012 and PD CEN/TS 16415:2013.



Components	Description	Material	Qty	Weight
XRAIL-TR-011	Shuttle	Aluminium 316SS	1	0.770

X-RAIL SHUTTLE

XRAIL-TR-017

- The X-Rail Shuttle allows for seamless movement along X-Rail Rigid Anchor Line.
- X-Rail Shuttle is used for Fall Arrest.
- Tested for 15kN, rated for one user.
- Tested to work in a multitude of directions, see installation guides for area of use.
- Compliant with AS/NZS 1891.2, EN795:2012 and PD CEN/TS 16415:2013.



Components	Description	Material	Qty	Weight
XRAIL-TR-017	Abseil Shuttle	Aluminium 316SS	1	0.733

X-RAIL ABSEIL SHUTTLE

XRAIL-TR-017A

- The X-Rail Shuttle allows for seamless movement along X-Rail Rigid Anchor Line.
- X-Rail Shuttle is used for Fall Arrest and Abseiling.
- Tested for 15kN, rated for one user.
- Tested to work in a multitude of directions, see installation guides for area of use.
- Compliant with AS/NZS 1891.2, EN795:2012 and PD CEN/TS 16415:2013.



Components	Description	Material	Qty	Weight
XRAIL-TR-017A	XRAIL Ultra Shuttle - Universal - Abseil	Aluminium 316SS	1	0.733

X-RAIL WARNING SIGN

XRAIL-TR-WARN

- X-Rail Compliance Warning Entry Sign.

Components	Description	Material	Qty	Weight
XRAIL-TR-WARN	Warning Sign	Aluminium	1	0.180





SafetyLink's X-Rail Ultra is a horizontal rigid anchor line designed for use as part of a personal fall protection system, providing continuous attachment for fall arrest and overhead abseiling applications.

Key Features:

- Horizontal rigid anchor line with continuous mobile anchor point connection
- Suitable for fall arrest and overhead abseiling applications
- Designed for use in limited fall clearance environments
- Supports up to four users per system
- Rated to 150kg maximum user weight per person
- Australian Made
- Compliant multi-user system for demanding access environments



SCAN ME

**X-RAIL ULTRA
INSTALLATION
HANDBOOK**



SCAN ME

X-RAIL ULTRA WEBSITE



Got questions? Contact SafetyLink for more information.

1300 789 545



X-RAIL ULTRA HORIZONTAL RAIL SYSTEM

SafetyLink's X-Rail Ultra is a horizontal rigid anchor line engineered for continuous fall protection in environments requiring reliable access and movement under load. Designed to support both fall arrest and overhead abseiling applications, the system allows users to remain continuously attached via mobile anchor points that traverse smoothly along the rigid rail. Its low-deflection design makes it particularly suitable for installations where fall clearance is limited, while maintaining consistent performance across multi-user applications.

Engineered for demanding access conditions, the X-Rail Ultra supports up to four users, each with a maximum weight of 150kg. It accommodates spans of up to 10 metres for fall arrest and up to 4 metres for abseil applications, making it ideal for complex industrial and building maintenance environments where safety and mobility are critical.

APPLICATION:

Horizontal rigid anchor systems for fall arrest and overhead abseiling in industrial and building access environments.

USE:

Suitable for multi-user systems where continuous attachment and movement are required in restricted clearance conditions.

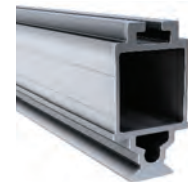
The SafetyLink ULTRA X-Rail is a Rigid Anchor Line suitable for use as part of a personal fall protection system on Concrete and Steel Structures. The X-Rail offers a Horizontal Rigid Anchor Line with one or multiple Mobile Anchor Points for attaching to. The X-Rail can be installed Overhead.

X-RAIL ULTRA - ALUMINIUM RAIL

XRAIL-U-PRO-6M.T6

- 6 metre Aluminium Rail is used to extend rail line to required length.

Components	Description	Material	Qty	Weight
XRAIL-U-PRO-6M.T6	X-RAIL Ultra Rail Profile T6	Aluminium	1	26.56

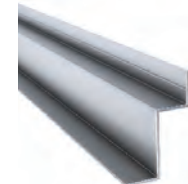


X-RAIL ULTRA - CONCEALED PROFILE

XRAIL-U-CON-6M.T5

- Rail Drill Bit is used to drill holes in required location for rail line.

Components	Description	Material	Qty	Weight
XRAIL-U-CON-6M.T5	X-RAIL Ultra Concealed Profile	Aluminium	1	5.000



X-RAIL ULTRA - CONCEALED KIT

XRAIL-U-101.6M.KIT

- 6 metre Aluminium Rail is used to extend rail line to required length with;
- Concealed profile is used to conceal the rail line overhead.

Components	Description	Material	Qty	Weight
XRAIL-U-PRO-6M.T6	X-RAIL Ultra Concealed Kit 6M	Aluminium	1	26.56
XRAIL-U-CON-6M.T5	X-RAIL Ultra Conceal Rail Side x 6M (*NIL Anodised)	Aluminium	2	5.000
SCREW 12-14x20mm	Screw: 12-14 x 20mm Self Tapping	Aluminium	40	0.120

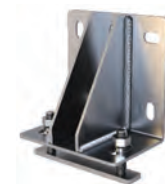


WALL MOUNTED INTERMEDIATE & END BRACKET

XRAIL-U-WL-BRACKET

- Wall Mounted End and Intermediate Bracket is used to hold rail into place.

Components	Description	Material	Qty	Weight
XRAIL-U-WL-BRACKET	X-RAIL Ultra Wall Mounted Intermediate & End Bracket	Aluminium	1	2.000



X-RAIL ULTRA - END STOP

XRAIL-U-END

- X-Rail Ultra End Stop is used to terminate the rail system at the end of the line.

Components	Description	Material	Qty	Weight
XRAIL-U-END	X-RAIL Ultra End Stop	Aluminium	1	0.690



X-RAIL ULTRA - MID SPAN GATE KIT
XRAIL-U-GATE_MID

- X-Rail Ultra Middle Span Gate offers a location on the rail line where shuttles can be loaded and unloaded from the system.

Components	Description	Material	Qty	Weight
XRAIL-U-GATE_MID	X-RAIL Ultra Mid Span Gate Kit	Aluminium	1	8.820


X-RAIL ULTRA - END SPAN GATE KIT
XRAIL-U-GATE_END

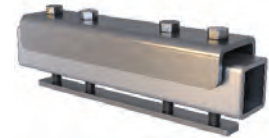
- X-Rail Ultra End Gate offers a location on the end of the rail line where shuttles can be loaded and unloaded from the system.

Components	Description	Material	Qty	Weight
XRAIL-U-GATE_END	X-RAIL Ultra End Span Gate Kit	Aluminium	1	6.880


X-RAIL ULTRA - JOIN KIT
XRAIL-U-JOIN

- X-Rail Ultra Join Kit is used to connect rail lengths together.

Components	Description	Material	Qty	Weight
XRAIL-U-JOIN	X-RAIL Ultra Join	Aluminium	1	3.000


X-RAIL ULTRA - LONG SPAN RAIL JOIN KIT
XRAIL-U-JOIN.L

- X-Rail Ultra Join Kit is used to connect rail lengths together.

Components	Description	Material	Qty	Weight
XRAIL-U-JOIN.L	X-RAIL Ultra Join - Long Span	Aluminium	1	4.200


X-RAIL ULTRA - JOIN, XRAIL TO XRAIL ULTRA
XRAIL-U-XTX

- X-Rail Ultra Join Kit is used to connect X-Rail to X-Rail Ultra.

Components	Description	Material	Qty	Weight
XRAIL-U-XTX	X-RAIL Ultra Join - X-Rail to X-Rail Ultra	Aluminium	1	


X-RAIL ULTRA - OVERHEAD BRACKET
XRAIL-U-OH-BRACKET

- X-Rail Ultra Overhead Bracket is used to hold the rail into place.

Components	Description	Material	Qty	Weight
XRAIL-U-OH-BRACKET	X-RAIL Ultra Overhead Fixed Bracket Kit	Aluminium	1	0.850



The SafetyLink ULTRA X-Rail is a Rigid Anchor Line suitable for use as part of a personal fall protection system on Concrete and Steel Structures. The X-Rail offers a Horizontal Rigid Anchor Line with one or multiple Mobile Anchor Points for attaching to.

The X-Rail can be installed Overhead.

X-RAIL ULTRA OVERHEAD SPACER KIT 50mm

XRAIL-U-SUSP.50.K

- The X-Rail Ultra Overhead Spacer can be used to level a system installed on an uneven substrate or install a system at a distance from a substrate.

Components	Description	Material	Qty	Weight
XRAIL-U-SUSP.50.K	X-RAIL Ultra Spacer 50mm	Aluminium	1	



X-RAIL ULTRA OVERHEAD SPACER KIT 100mm

XRAIL-U-SUSP.100.K

- The X-Rail Ultra Overhead Spacer can be used to level a system installed on an uneven substrate or install a system at a distance from a substrate.

Components	Description	Material	Qty	Weight
XRAIL-U-SUSP.100.K	X-RAIL Ultra Spacer 100mm	Aluminium	1	



X-RAIL ULTRA OVERHEAD SPACER KIT 150mm

XRAIL-U-SUSP.150.K

- The X-Rail Ultra Overhead Spacer can be used to level a system installed on an uneven substrate or install a system at a distance from a substrate.

Components	Description	Material	Qty	Weight
XRAIL-U-SUSP.150.K	X-RAIL Ultra Spacer 150mm	Aluminium	1	



X-RAIL ULTRA OVERHEAD SPACER KIT 200mm

XRAIL-U-SUSP.200.K

- The X-Rail Ultra Overhead Spacer can be used to level a system installed on an uneven substrate or install a system at a distance from a substrate.

Components	Description	Material	Qty	Weight
XRAIL-U-SUSP.200.K	X-RAIL Ultra Spacer 200mm	Aluminium	1	



X-RAIL ULTRA OVERHEAD SPACER KIT 250mm

XRAIL-U-SUSP.250.K

- The X-Rail Ultra Overhead Spacer can be used to level a system installed on an uneven substrate or install a system at a distance from a substrate.

Components	Description	Material	Qty	Weight
XRAIL-U-SUSP.250.K	X-RAIL Ultra Spacer 250mm	Aluminium	1	



Got questions? Contact SafetyLink for more information.

1300 789 545

X-RAIL ULTRA - SUSPENSION ASSEMBLY
XRAIL-U-SUSP.

- X-Rail Ultra suspension assemblies are used to suspend rail from overhead.



Components	Description	Material	Qty	Weight
XRAIL-U-SUSP.500	X-RAIL Ultra Suspension Assembly, 500mm	Aluminium	1	2.320
XRAIL-U-SUSP.1000	X-RAIL Ultra Suspension Assembly, 1000mm	Aluminium	1	3.100

X-RAIL ULTRA - MATERIALS HANDLING BAR
XRAIL-U-MH.BAR

- X-Rail Ultra materials handling bar is used to lift materials.



Components	Description	Material	Qty	Weight
XRAIL-U-MH.BAR	X-RAIL Ultra Materials Handling Bar	Aluminium	1	

X-RAIL ULTRA - GATE KEY
XRAIL-U-GATE.KEY

- X-Rail Ultra Gate Key is an optional component that can be used to help unlocking the gate.



Components	Description	Material	Qty	Weight
XRAIL-U-GATE.KEY	X-RAIL Ultra Gate Key	Aluminium	1	1.140

X-RAIL ULTRA - CAST-IN SOCKET KIT
XRAIL-U-CAST

- X-Rail Ultra Cast-in Sockets for installation prior to pouring concrete.



Components	Description	Material	Qty	Weight
XRAIL-U-CAST	X-RAIL Ultra Cast-In Socket Kit	Aluminium	1	0.490

X-RAIL ULTRA - SUPPLIED STRUCTURE BRACKET
XRAIL-U-SS-BRACKET

- X-Rail Ultra supplied structure brackets allow the system to be fixed to a structure with the rail studs.



Components	Description	Material	Qty	Weight
XRAIL-U-SS-BRACKET	X-RAIL Ultra Supplied Structure Bracket	Aluminium	1	0.350

X-RAIL DRILL ON-SITE FIXTURE
XRAIL-TR-402

- X-Rail On-Site Drill Fixture.



Components	Description	Material	Qty	Weight
XRAIL-TR-402	XRAIL On-site Drill Fixture	Metal	1	0.492

X-RAIL ULTRA - CONCRETE STUD
CON-M12x160-XDONUT

- X-Rail Ultra Concrete Stud Fixing.



Components	Description	Material	Qty	Weight
CON-M12x160-XDONUT	X-RAIL Ultra Concrete Stud M12x160mm	Aluminium	1	0.143

ALTIRAIL - HORIZONTAL RIGID RAIL LINE

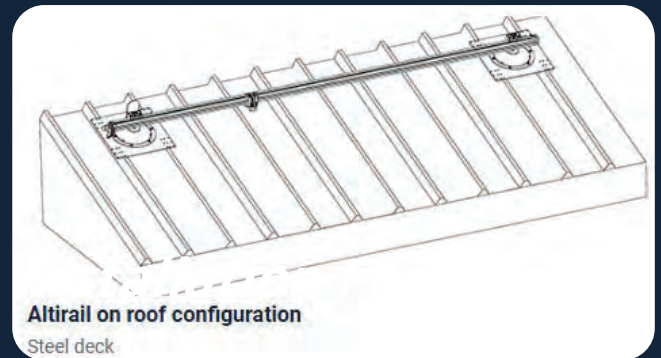


ALTIRAIL

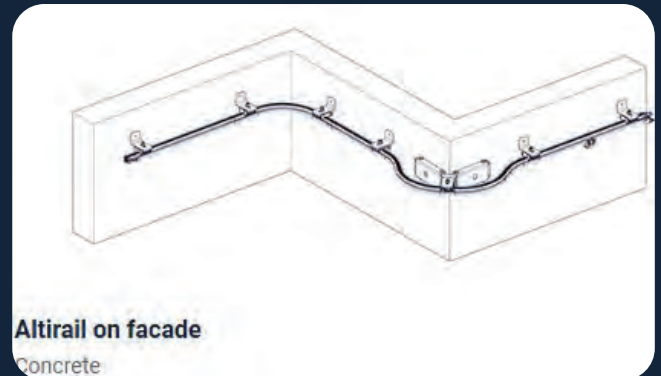
ALTIRAIL is a high-performance horizontal and vertical rail lifeline system designed for continuous fall protection, featuring movable carriages for smooth movement across floors, walls and soffits.

Key Features:

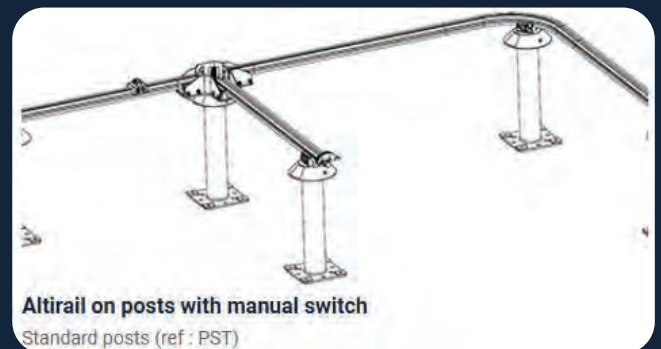
- Horizontal or vertical rigid rail system with smooth-running movable carriages
- Effective in low fall clearance environments
- Can be installed in tensioned or suspended configurations
- Compatible with a wide range of structures including concrete, steel and timber
- Can be combined with steel rope for applications without a fixed base
- Provides smooth, fluid user movement along the rail system
- Versatile solution for complex access requirements



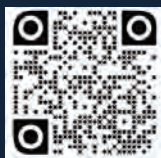
Altirail on roof configuration
Steel deck



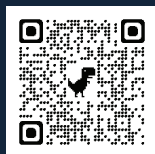
Altirail on facade
Concrete



Altirail on posts with manual switch
Standard posts (ref : PST)



Altirail Training



Altirail Website



ALTIRAIL RAIL SYSTEM

ALTIRAIL horizontal and vertical rail system is a versatile fall protection solution designed to deliver smooth and continuous movement across a wide range of structural applications. Unlike traditional cable-based lifelines, ALTIRAIL performs effectively even in low fall clearance environments, making it suitable for complex access conditions where safety margins are limited. The system uses a rigid rail with movable carriages that allow users to travel freely and efficiently along the installed pathway while maintaining continuous attachment.

ALTIRAIL can be installed on floors, walls or soffits, and offers flexible configuration options including tensioned or suspended setups depending on site requirements. Its adaptable design can be used across a number of different industries from construction to communication. In scenarios where a fixed fixing base is unavailable, the system can be combined with steel rope to extend its application range.

APPLICATION:

Horizontal and vertical lifeline system for building maintenance, industrial access and complex structural environments requiring continuous fall protection.

USE:

Suitable for multi-directional movement across varied structural surfaces where low fall clearance or non-standard installation conditions exist.

ALTIRAIL - HORIZONTAL RIGID RAIL LINE

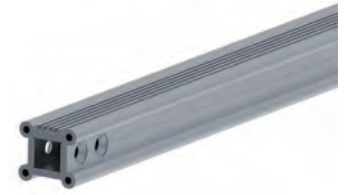
ALTIRAIL horizontal and vertical rail system is a versatile fall protection solution designed to deliver smooth and continuous movement across a wide range of structural applications.

ALTIRAIL - ALUMINIUM RAIL

WVRAIL.

- Aluminium rail is used to extend rail line to required length.

Components	Description	Material	Qty	Weight
WVRRAIL3	ALTIRAIL Aluminium Rail 3m	Aluminium	1	6.350
WVRRAIL3.A	ALTIRAIL Aluminium Rail 3m - Anodised Clear	Aluminium	1	6.350
WVRRAIL6	ALTIRAIL Aluminium Rail 6m	Aluminium	1	12.71
WVRRAIL6.A	ALTIRAIL Aluminium Rail 6m - Anodised Clear	Aluminium	1	12.71



ALTIRAIL - INNER CURVE

WVRA90E

- 90 degree inner corner is used to redirect rail line around corner.

Components	Description	Material	Qty	Weight
WVRA90E	ALTIRAIL Inner Curve 90°	Aluminium	1	1.610



ALTIRAIL - INNER CURVE OVERHEAD

WVRA90E2

- 90 degree inner corner is used to redirect rail line around corner overhead.

Components	Description	Material	Qty	Weight
WVRA90E2	ALTIRAIL Inner Curve 90° Overhead	Aluminium	1	1.600



ALTIRAIL - OUTER CURVE

WVRA90S

- 90 degree outer corner is used to redirect rail line around corner.

Components	Description	Material	Qty	Weight
WVRA90S	ALTIRAIL Outer Curve 90°	Aluminium	1	3.100



ALTIRAIL - OUTER CURVE OVERHEAD

WVRA90S2

- 90 degree outer corner is used to redirect rail line around corner overhead.

Components	Description	Material	Qty	Weight
WVRA90S2	ALTIRAIL Outer Curve 90° Overhead	Aluminium	1	3.100

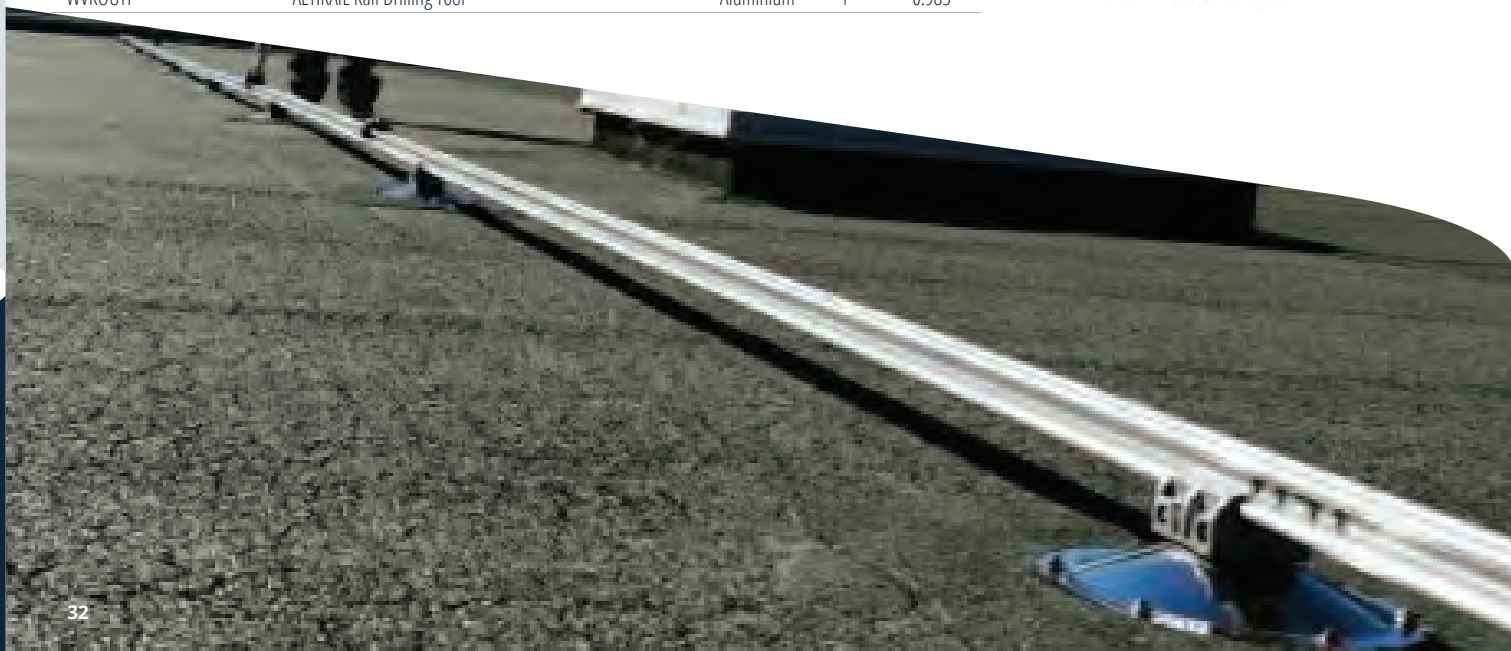


ALTIRAIL - RAIL DRILLING TOOL

WVROUTP

- ALTIRAIL Rail Drilling Tool.

Components	Description	Material	Qty	Weight
WVROUTP	ALTIRAIL Rail Drilling Tool	Aluminium	1	0.985



Got questions? Contact SafetyLink for more information.

1300 789 545

ALTIRAIL - FIXED END BRACKET

WVREXTF

- ALTIRAIL Fixed End Bracket.

Components	Description	Material	Qty	Weight
WVREXTF	ALTIRAIL Fixed End Bracket	Aluminium	1	0.130



ALTIRAIL - JOIN

WVRECL

- ALTIRAIL Join.

Components	Description	Material	Qty	Weight
WVRECL	ALTIRAIL Join	Aluminium	1	0.430



ALTIRAIL - INTERMEDIATE BRACKET

WVRSUP

- ALTIRAIL Intermediate Bracket.

Components	Description	Material	Qty	Weight
WVRSUP	ALTIRAIL Intermediate Bracket	Aluminium	1	0.370



ALTIRAIL - END GATE

WVRBE

- ALTIRAIL End Gate.

Components	Description	Material	Qty	Weight
WVRBE	ALTIRAIL End gate	Aluminium	1	0.594



ALTIRAIL - INTERMEDIATE GATE

WVRRO

- ALTIRAIL Intermediate Gate.

Components	Description	Material	Qty	Weight
WVRRO	ALTIRAIL Intermediate Gate	Aluminium	1	1.049



ALTIRAIL - WALL MOUNTING L BRACKET

WVREQ

- ALTIRAIL Wall Mounting L Brackets.

Components	Description	Material	Qty	Weight
WVREQG	Wall Mounting L Bracket	Aluminium	1	0.758
WVREQI	Wall Mounting L Bracket	Stainless Steel	1	0.280



ALTIRAIL - RAIL TROLLEY

WVRCF

- WVRCF2 : roller runner
- WVRCF3 : runner for suspension work

Components	Description	Material	Qty	Weight
WVRCF2	ALTIRAIL Rail Trolley	Aluminium	1	0.417
WVRCF3	ALTIRAIL Rail Trolley - Abseil Ball Bearing	Aluminium	1	0.395



ALTIRAIL - BIDIRECTIONAL BLOCK TROLLEY

WVRCBC

- WVRCBC : Bidirectional Block Trolley.
- Integrated shock absorber and karabiners - Aluminium alloy body.

Components	Description	Material	Qty	Weight
WVRCBC	ALTIRAIL Bidirectional Block Trolley	Aluminium	1	1.000



PERSONAL PROTECTIVE EQUIPMENT & SELF RETRACTING LIFELINES

SafetyLink's PPE range provides reliable, compliant personal protective equipment designed to support safe working at heights and in hazardous environments. From essential height safety gear such as harnesses, kits and lifelines through to a comprehensive selection of head, hand, eye, hearing, respiratory and protective workwear, the range delivers durable, site-ready protection for demanding industrial applications.



Got questions? Contact SafetyLink for more information.

1300 789 545



PERSONAL PROTECTIVE EQUIPMENT & SELF RETRACTING LIFELINES

AERO BLOC - SINGLE SELF RETRACTING LIFELINE WITH SNAP HOOK

AEROBLOC2M-SH-KB

- Lightweight compact unit.
- Clear durable housing for ease of unit inspection.
- External shock pack with durable cover.
- Aluminium connectors with 16kN gate strength.

Components	Description	Material	Qty	Weight
AEROBLOC2M-SH-KB	2m SRL with Snap Hook and Karabiner	Nylon/Alloy	1	1.400



AERO BLOC - TWIN SELF RETRACTING LIFELINE WITH SNAP HOOK

AEROBLOC2M-SH-X2

- Lightweight compact unit.
- Clear durable housing for ease of unit inspection.
- External shock pack with durable cover.
- Aluminium connectors with 16kN gate strength.
- Aero connect triple action dual leg bracket, joins twin legs.

Components	Description	Material	Qty	Weight
AEROBLOC2M-SH-X2	2m Twin SRL with Snap Hook and Aero Connect	Nylon/Alloy	1	2.700



AERO BLOC - SINGLE SELF RETRACTING LIFELINE WITH REBAR/SCAFFOLD HOOK

AEROBLOC2M-RH-KB

- Lightweight compact unit.
- Clear durable housing for ease of unit inspection.
- External shock pack with durable cover.
- Aluminium connectors with 16kN gate strength.

Components	Description	Material	Qty	Weight
AEROBLOC2M-RH-KB	2m SRL with Rebar/Scaffold Hook and Karabiner	Nylon/Alloy	1	1.800



AERO BLOC - TWIN SELF RETRACTING LIFELINE WITH REBAR/SCAFFOLD HOOK

AEROBLOC2M-RH-X2

- Lightweight compact unit.
- Clear durable housing for ease of unit inspection.
- External shock pack with durable cover.
- Aluminium connectors with 16kN gate strength.
- Aero connect triple action dual leg bracket, joins twin legs.

Components	Description	Material	Qty	Weight
AEROBLOC2M-RH-X2	2m Twin SRL-Rebar/Scaffold Hook and Aero Connect	Nylon/Alloy	1	3.600



Got questions? Contact SafetyLink for more information.

1300 789 545

The SafetyLink Tuff-Bloc is a Self Retracting Lifeline suitable for use as part of a personal fall protection system. Non edge rated versions of the Tuff-Bloc Pro shall be used in the vertical or near vertical orientation. The Tuff-Bloc Edge models can be used horizontally and shall be used if there is a chance a fall occurring over a leading edge. Where possible the Tuff-Bloc should be used to limit free fall to less than 600mm (2ft).

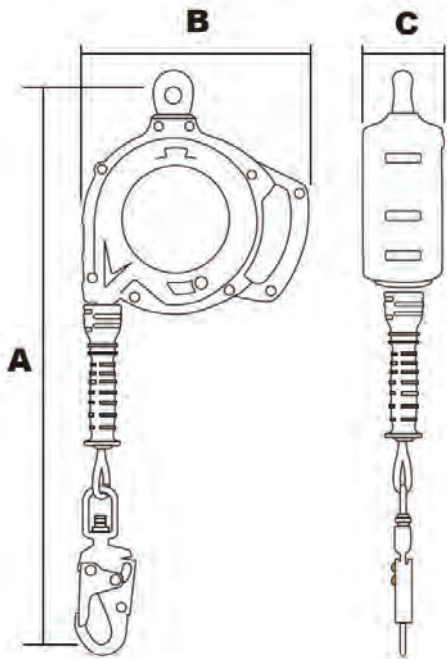


FIGURE 1



FIGURE 2

Standard

The Tuff-Bloc Pro models listed in Figure 1 are certified to;

- EN360-2002 40-140kg
- AS/NZS 1891.3-2020 40-140kg
- ANSI Z359.14-2021 130-310lbs Class 1
- CSA Z259.2.2-17 130-310 lbs
- OSHA 1910.140 420lbs

The Tuff-Bloc Edge models listed in Figure 1 are certified to;

- EN360-2002 and RFU 11.060 40-140kg
- AS/NZS 1891.3-2020 40-140kg
- EU Declaration can be found at <https://www.safetylink.com>

When selecting an anchor for use with the Tuff-Bloc Self Retracting Lifeline, consider the local standards and regulations. Where a free fall does not exceed 600mm (2ft), the anchor selected shall be rated to a minimum of 12kN (2700lbs). Where a free fall can exceed 600mm (2ft), the anchor selected shall be rated to 15kN (3400lbs).

For leading edge applications, the anchor shall not be located below the edge.

The fall hazard shall never be between the user and the anchor when using this product.

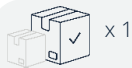
User Rating

The Tuff-Bloc is rated for one user. If a fall could occur over an edge, ensure an edge rated model is used.

Product Code	Anchor Below Connection /Edge Rated	Functional Length	Retracted Length (A)	Width (B)	Thickness (C)	Weight
TUFF-BLOC-PRO006	<input checked="" type="checkbox"/>	6m (20ft)	610mm (24")	226mm (8.9")	86mm (3.4")	3.5kg (7.7lbs)
TUFF-BLOC-PRO010	<input checked="" type="checkbox"/>	10m (33ft)	610mm (24")	226mm (8.9")	86mm (3.4")	4.4kg (9.8lbs)
TUFF-BLOC-PRO015	<input checked="" type="checkbox"/>	15m (50ft)	671mm (26.4")	259mm (10.2")	97.5mm (3.8")	6.8kg (15lbs)
TUFF-BLOC-PRO020	<input checked="" type="checkbox"/>	20m (66ft)	701mm (27.6")	292mm (11.5")	99mm (3.9")	9.1kg (20.1lbs)
TUFF-BLOC-EDGE006	<input checked="" type="checkbox"/>	6m (20ft)	860mm (33.9")	226mm (8.9")	86mm (3.4")	4.0kg (8.8lbs)
TUFF-BLOC-EDGE010	<input checked="" type="checkbox"/>	10m (33ft)	860mm (33.9")	226mm (8.9")	86mm (3.4")	4.7kg (10.4lbs)
TUFF-BLOC-EDGE015	<input checked="" type="checkbox"/>	15m (50ft)	920mm (36.2")	259mm (10.2")	97.5mm (3.8")	7.1kg (15.7lbs)
TUFF-BLOC-EDGE020	<input checked="" type="checkbox"/>	20m (66ft)	950mm (37.4")	292mm (11.5")	99mm (3.9")	9.4kg (20.7lbs)

PPE - ROOFERS KITS

AS/NZS1891.1:2020
AS/NZS 1891.5
AS/NZS 1891.3



DP_ROOFKIT_SL_DP12GT.20

Roof Workers Kit

WAUHAR12 Harness S,M,L or XL,XXL: Ergonomic design for comfort and protection | Adjustable Energy-Absorbing Rope Line – 20m or 30m | Anchor Strap : 1.5m red 25mm webbing strap with 21kN rating | High-Strength Karabiners | Gear Bag.



Available Options: Roofers Kit S,M,L with 20M Rope line: DP_ROOFKIT_SL_DP12GT.20
Roofers Kit XL, XXL with 20M Rope line: DP_ROOFKIT_SL_DP12XX.20
Roofers Kit S,M,L with 30M Rope line: DP_ROOFKIT_SL_DP12GT.30
Roofers Kit XL, XXL with 30M Rope line: DP_ROOFKIT_SL_DP12XX.30

AS/NZS1891.1:2020
AS/NZS 1891.5
AS/NZS 1891.3



DP_ROOFKIT_SL_DP14GT.20

Roof Workers Kit

WAUHAR14 Harness S,M,L or XL,XXL: Ergonomic design for comfort and protection | Adjustable Energy-Absorbing Rope Line – 20m or 30m | Anchor Strap : 1.5m red 25mm webbing strap with 21kN rating | High-Strength Karabiners | Gear Bag.



Available Options: Roofers Kit S,M,L with 20M Rope line: DP_ROOFKIT_SL_DP14GT.20
Roofers Kit XL, XXL with 20M Rope line: DP_ROOFKIT_SL_DP14XX.20
Roofers Kit S,M,L with 30M Rope line: DP_ROOFKIT_SL_DP14GT.30
Roofers Kit XL, XXL with 30M Rope line: DP_ROOFKIT_SL_DP14XX.30

AS/NZS1891.1:2020
AS/NZS 1891.5
AS/NZS 1891.3



DP_ROOFKIT_SL_DP32MGT.20

Roof Workers Kit

WAUHAR32 Harness S,M,L or XL,XXL: Ergonomic design for comfort and protection | Adjustable Energy-Absorbing Rope Line – 20m or 30m | Anchor Strap : 1.5m red 25mm webbing strap with 21kN rating | High-Strength Karabiners | Gear Bag.



Available Options: Roofers Kit S,M,L with 20M Rope line: DP_ROOFKIT_SL_DP32MGT.20
Roofers Kit XL, XXL with 20M Rope line: DP_ROOFKIT_SL_DP32MXX.20
Roofers Kit S,M,L with 30M Rope line: DP_ROOFKIT_SL_DP32MGT.30
Roofers Kit XL, XXL with 30M Rope line: DP_ROOFKIT_SL_DP32MXX.30

AS/NZS1891.1:2020
AS/NZS 1891.5
AS/NZS 1891.3



DP_ROOFKIT_SL_DP35MGT.20

Roof Workers Kit

WAUHAR35 Harness S,M,L or XL,XXL: Ergonomic design for comfort and protection | Adjustable Energy-Absorbing Rope Line – 20m or 30m | Anchor Strap : 1.5m red 25mm webbing strap with 21kN rating | High-Strength Karabiners | Gear Bag.

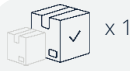


Available Options: Roofers Kit S,M,L with 20M Rope line: DP_ROOFKIT_SL_DP35MGT.20
Roofers Kit XL, XXL with 20M Rope line: DP_ROOFKIT_SL_DP35MXX.20
Roofers Kit S,M,L with 30M Rope line: DP_ROOFKIT_SL_DP35MGT.30
Roofers Kit XL, XXL with 30M Rope line: DP_ROOFKIT_SL_DP35MXX.30

Got questions? Contact SafetyLink for more information.

1300 789 545

AS/NZS1891.1:2020
AS/NZS 1891.5
AS/NZS 1891.3



DP_ROOFKIT_DP12GT.20EG

Roof Workers Kit with Eyewear and Gloves | WAUHAR12 Harness S,M,L or XL,XXL: Ergonomic design for comfort and protection | Adjustable Energy-Absorbing Rope Line – 20m or 30m | Anchor Strap : 1.5m red 25mm webbing strap with 21kN rating | High-Strength Karabiners | Gear Bag | Eyewear : DP_IRAZUIN | Gloves: DP_VE727NO09.



Available Options:

- Roofers Kit S,M,L with 20M Rope line, Eyewear & Gloves: DP_ROOFKIT_DP12GT.20EG
- Roofers Kit XL, XXL with 20M Rope line, Eyewear & Gloves: DP_ROOFKIT_DP12XX.20EG
- Roofers Kit S,M,L with 30M Rope line, Eyewear & Gloves: DP_ROOFKIT_DP12GT.30EG
- Roofers Kit XL, XXL with 30M Rope line, Eyewear & Gloves: DP_ROOFKIT_DP12XX.30EG

AS/NZS1891.1:2020
AS/NZS 1891.5
AS/NZS 1891.3



DP_ROOFKIT_DP14GT.20EG

Roof Workers Kit with Eyewear and Gloves | WAUHAR14 Harness S,M,L or XL,XXL: Ergonomic design for comfort and protection | Adjustable Energy-Absorbing Rope Line – 20m or 30m | Anchor Strap : 1.5m red 25mm webbing strap with 21kN rating | High-Strength Karabiners | Gear Bag | Eyewear : DP_IRAZUIN | Gloves: DP_VE727NO09.



Available Options:

- Roofers Kit S,M,L with 20M Rope line, Eyewear & Gloves: DP_ROOFKIT_DP14GT.20EG
- Roofers Kit XL, XXL with 20M Rope line, Eyewear & Gloves: DP_ROOFKIT_DP14XX.20EG
- Roofers Kit S,M,L with 30M Rope line, Eyewear & Gloves: DP_ROOFKIT_DP14GT.30EG
- Roofers Kit XL, XXL with 30M Rope line, Eyewear & Gloves: DP_ROOFKIT_DP14XX.30EG

AS/NZS1891.1:2020
AS/NZS 1891.5
AS/NZS 1891.3



DP_ROOFKIT_DP32MGT.20EG

Roof Workers Kit with Eyewear and Gloves | WAUHAR32 Harness S,M,L or XL,XXL: Ergonomic design for comfort and protection | Adjustable Energy-Absorbing Rope Line – 20m or 30m | Anchor Strap : 1.5m red 25mm webbing strap with 21kN rating | High-Strength Karabiners | Gear Bag | Eyewear : DP_IRAZUIN | Gloves: DP_VE727NO09.



Available Options:

- Roofers Kit S,M,L with 20M Rope line, Eyewear & Gloves: DP_ROOFKIT_DP32MGT.20EG
- Roofers Kit XL, XXL with 20M Rope line, Eyewear & Gloves: DP_ROOFKIT_DP32MXX.20EG
- Roofers Kit S,M,L with 30M Rope line, Eyewear & Gloves: DP_ROOFKIT_DP32MGT.30EG
- Roofers Kit XL, XXL with 30M Rope line, Eyewear & Gloves: DP_ROOFKIT_DP32MXX.30EG

AS/NZS1891.1:2020
AS/NZS 1891.5
AS/NZS 1891.3



DP_ROOFKIT_DP35MGT.20EG

Roof Workers Kit with Eyewear and Gloves | WAUHAR35 Harness S,M,L or XL,XXL: Ergonomic design for comfort and protection | Adjustable Energy-Absorbing Rope Line – 20m or 30m | Anchor Strap : 1.5m red 25mm webbing strap with 21kN rating | High-Strength Karabiners | Gear Bag | Eyewear : DP_IRAZUIN | Gloves: DP_VE727NO09.



Available Options:

- Roofers Kit S,M,L with 20M Rope line, Eyewear & Gloves: DP_ROOFKIT_DP35MGT.20EG
- Roofers Kit XL, XXL with 20M Rope line, Eyewear & Gloves: DP_ROOFKIT_DP35MXX.20EG
- Roofers Kit S,M,L with 30M Rope line, Eyewear & Gloves: DP_ROOFKIT_DP35MGT.30EG
- Roofers Kit XL, XXL with 30M Rope line, Eyewear & Gloves: DP_ROOFKIT_DP35MXX.30EG

Single Lanyard with Tear Web Energy Absorbing

DP_WAUAN203200NN

- Single Lanyard with Tear Web Energy Absorbing
- Harness Connector: Karabiner. Anchor Connector: Karabiner.
- Orange Webbing.



Components	Description	Material	Qty	Weight
DP_WAUAN203200NN	Single Lanyard with Tear Web Energy Absorbing	Polyester	1	0.850

Premium Single Lanyard with Tear Web Energy Absorbing and Elasticised Leg

DP_WAUAN235200NN

- Premium Single Lanyard with Tear Web Energy Absorbing and Elasticised Leg.
- Harness Connector: Karabiner. Anchor Connector: Karabiner.
- Black Webbing with Orange Fleck.



Components	Description	Material	Qty	Weight
DP_WAUAN235200NN	Single Lanyard. Tear Web Energy Absorbing Elasticised Leg	Polyester	1	0.800

Premium Single Lanyard with Tear Web Energy Absorbing and Elasticised Leg

DP_WAUAN235200JJ

- Premium Single Lanyard with Tear Web Energy Absorbing and Elasticised Leg.
- Harness Connector: Snap Hook. Anchor Connector: Snap Hook.
- Black Webbing with Orange Fleck.



Components	Description	Material	Qty	Weight
DP_WAUAN235200JJ	Single Lanyard with Tear Web Energy Absorbing and Elasticised Leg	Polyester	1	1.100

Premium Single Lanyard with Tear Web Energy Absorbing and Elasticised Leg

DP_WAUAN235200JW

- Premium Single Lanyard with Tear Web Energy Absorbing and Elasticised Leg.
- Harness Connector: Snap Hook. Anchor Connector: Rebar Hook.
- Black Webbing with Orange Fleck.



Components	Description	Material	Qty	Weight
DP_WAUAN235200JW	Single Lanyard with Tear Web Energy Absorbing and Elasticised Leg	Polyester	1	1.550

Premium Twin Lanyard with Tear Web Energy Absorbing and Elasticised Legs

DP_WAUAN245200JWW

- Premium Twin Lanyard with Tear Web Energy Absorbing and Elasticised Legs
- Harness Connector: Snap Hook. Anchor Connector: Rebar Hook.
- Black Webbing with Orange Fleck.



Components	Description	Material	Qty	Weight
DP_WAUAN245200JWW	Twin Lanyard with Tear Web Energy Absorbing and Elasticised Legs	Polyester	1	2.400

DELTA PLUS FULL BODY HARNESS

DP_WAUHAR12

- Centre Rear D ring attachment.
- Two (2) Centre Front Hoops.
- Orange Webbing with Black Stitching.
- Aluminium Fittings.

TWO (2) SIZES AVAILABLE

Components	Description	Material	Qty	Weight
DP_WAUHAR12GT	Delta Plus Full Body Harness	Polyester	S,M,L	0.730
DP_WAUHAR12XX	Delta Plus Full Body Harness	Polyester	XL,XXL	0.730



DELTA PLUS FULL BODY HARNESS

DP_WAUHAR14

- Centre Rear D ring attachment.
- Two (2) Centre Front Hoops.
- Includes Belt with Side D Rings and Restraint D Ring.
- Orange Webbing with Black Stitching.
- Aluminium Fittings.

TWO (2) SIZES AVAILABLE

Components	Description	Material	Qty	Weight
DP_WAUHAR14GT	Delta Plus Full Body Harness with Belt	Polyester	S,M,L	1.100
DP_WAUHAR14XX	Delta Plus Full Body Harness with Belt	Polyester	XL,XXL	1.100



DELTA PLUS PREMIUM RIGGER FULL BODY HARNESS

DP_WAUHAR32M

- Sternal Loops, Dorsal D-Ring.
- Quick Connect Legs, Pull Through Torso.
- Quick Connect Chest.
- Grey Webbing with Green Stitching.
- Aluminium Fittings.

TWO (2) SIZES AVAILABLE

Components	Description	Material	Qty	Weight
DP_WAUHAR32MGT	Premium Rigger Full Body Harness	Polyester	S,M,L	1.400
DP_WAUHAR32MXX	Premium Rigger Full Body Harness	Polyester	XL,XXL	1.400



DELTA PLUS PREMIUM MULTI-PURPOSE BODY HARNESS

DP_WAUHAR35M

- Sternal Loops, Dorsal D-Ring.
- Belt/Side Drings, Rear Waist D-Ring, Quick Connect Legs.
- Pull Through Torso, Quick Connect Chest.
- Grey Webbing with Green Stitching.
- Aluminium Fittings.

TWO (2) SIZES AVAILABLE

Components	Description	Material	Qty	Weight
DP_WAUHAR35MGT	Premium Multi-purpose Body Harness with Belt	Polyester	S,M,L	2.000
DP_WAUHAR35MXX	Premium Multi-purpose Body Harness with Belt	Polyester	XL,XXL	2.000



DELTA PLUS GEAR BAG

DP_TC008

- Delta Plus Gear Bag
- Material: PVC
- Size: 80cm x 46cm x 30cm unfolded.



Components	Description	Material	Qty	Weight
DP_TC008	Delta Plus Gear Bag	PVC	1	0.414

ROPE LINE 20M & 30M

ROPELN

- Adjustable Rope Lines available in 20 and 30 metres.
- Light weight alloy Rope Grab.
- 140kg Shock Pack and two Karabiners.



TWO (2) SIZES AVAILABLE

Components	Description	Material	Qty	Weight
ROPELN022	20m Rope Line	Alloy	20m	3.019
ROPELN030	30m Rope Line	Alloy	30m	4.600

TEMPORARY HORIZONTAL SAFETYLINE

SAFETYLYNE_LV201

- Temporary webbing lifeline, allowing to secure two (2) simultaneous users.
- Fall arrest work situations: Movement on lifeline, Restraint, Long horizontal movement on horizontal surface, Long horizontal movement on vertical structure, Short horizontal movement (less than 3m).
- Strap Width (mm): 50mm.
- Size 2.5m - 20m.



Components	Description	Material	Qty	Weight
SAFETYLYNE_LV201	Temporary Horizontal Lifeline	Polyester	1	0.062

- All products must be used within their intended design only.
- Failure to follow all warnings and instructions may result in a serious injury or death.
- Harnesses must be inspected as safe every time before and after each use.
- Six monthly logged safety inspections are to be completed by a competent person (refer to harness care/maintenance instructions).

DELTA PLUS EXTENSION STRAP

DP_LV102050

- Extension strap in high tenacity polyester with D-ring.
- Color: Black - Orange
- Width: 45mm.



Components	Description	Material	Qty	Weight
DP_LV102050	Delta Plus Anchorage Device	Polyester	1.5m	0.327kg

TRAUMA RELIEF STRAPS

DP_HA203FS

- Ultra-compact anti-compression strap kit in a reusable textile case to limit femoral compression in the event of a fall.
- Helps maintain normal blood circulation after a fall.
- Color: Black



Components	Description	Material	Qty	Weight
DP_HA203FS	Pair of femoral anti-compression straps	Polyamide	1	0.062kg

ANCHOR SLING

ASTRAP003

- 1.5 metre red 20mm Webbing Anchor Strap.
- Flat construction.
- Rated to 21kN.



Components	Description	Material	Qty	Weight
ASTRAP003	Anchor Strap	Nylon	1.5m	0.062kg

KARABINER

KARBNR034

- High strength aluminium Karabiner.
- Minimum breaking strength Rated 23kN.
- Gate opening 17mm.
- Double action, 16kN Rated gate strength.



Components	Description	Material	Qty	Weight
KARBNR034	Karabiner	Alu	1	0.163



Got questions? Contact SafetyLink for more information.



SCAN ME

www.safetylink.com



SCAN ME

**SAFETY CENTRE
ONLINE TRAINING**

TOOLS

SafetyLink offers a range of essential hand tools and installation accessories designed to support the safe, efficient installation, inspection and maintenance of height safety systems. Developed for use in demanding industrial and construction environments, these tools are engineered to assist installers and technicians in achieving accurate, compliant system setup while improving on-site efficiency. The range complements SafetyLink's broader fall protection systems by ensuring reliable, purpose-built equipment is available for every stage of installation and maintenance work at height.

1300 789 545

Gesipa Accubird Pro Kit

GESIPA.ACCU.PRO

- Setting force: 13,000 N. Weight: 2.1 kg with battery (2.0 Ah)
- Drive: brushless motor (BLDC). Stroke: 25 mm
- Nosepieces: 17/20, 17/24, 17/27, 17/29, 17/32, 17/36, 17/40 and 17/48, Additional jaw pusher for bigger blind-rivet dimensions
- Blind rivets from O 2.4 mm up to O 6 mm all materials (max. mandrel O 3.7 mm).



Product Code	Description	Qty	Weight
GESIPA.ACCU.PRO	Gesipa Accubird Pro Rivet Tool	1	6

Gesipa Powerbird Pro (Gold) Kit

GESIPA.PB.PRO.GOLD

- Ergonomically and well – proven design – It is equipped with low – wear jaws systems and features. The motor of the PowerBird® Pro Gold Edition has a very long service life, is essentially non-wearing and consistently guarantees the fastest setting frequencies.
- Supplied with 2 CAS 2.0 Ah Li-Ion battery packs and charger in L-BOX with nosepieces: 17/32, 17/36, 17/40 and 17/45. BULB-TITE® Nosepiece 17/48BT in working position.
- Riveter MUST Be Cleaned & Lubricated After Every 50-100 Bulb-Tite Rivets Pulled.



Product Code	Description	Qty	Weight
GESIPA.PB.PRO.GOLD	Gesipa Powerbird Pro Gold Rivet Tool	1	6

Gesipa Hand Tool HN 2-BT

GESIPA001.02

- Used in conjunction with 8mm Tri-fold rivets.
- Drill size 7.8-8.2mm. Length 27.7mm. Grip Range 1.0-9.5mm.
- Technical Data: Stroke: 10mm. Length: 577mm.



Product Code	Description	Qty	Weight
GESIPA001.02	Gesipa Hand Rivet Tool (HN 2-BT)	1	2.071

SafetyLink Hand Rivet Tool

HANDTOOL001

- Designed for installing height safety surface mounted anchor points.
- Lightweight and simple operation.
- Three piece jaws made of CR Mo steel provides long lasting tool life.
- Designed for use with 8mm Tri-fold rivets.
- Waste container for tidy collection of mandrels.
- Supplied with handy hex tool for removing and maintaining nose piece and jaws.
- Maximum Rivet Size: 8mm. Length 320mm.



Product Code	Description	Qty	Weight
HANDTOOL001	SafetyLink Hand Rivet Tool	1	1.200

Rivet - 8mm

- Aluminium Tri-fold Rivets.
- Diameter 7.7mm.

Product Code	Description	Seal	Grip mm	Hole mm	Qty	Weight
RIVET_8mm(27.7)	8mm Tri-fold Rivet	Green	1.1-9.5	7.8-8.2	1	0.007
RIVET_8mm(34)	8mm Tri-fold Rivet	Yellow	6.4-15.9	7.8-8.2	1	0.009
RIVET_8mm(39)	8mm Tri-fold Rivet	Black	9.5-19.1	7.8-8.2	1	0.011



Staht T25 Digital Pull Tester Kit (Anchor Testing)

t25 KIT

Going digital will save time and provide traceability for you, your team, and your customers. The t25 Digital Pull Tester is perfect for accurately testing safety eye bolts, scaffold anchors and construction fixings up to 25kN (5620 lbf). It's easy to use, cost effective and with the free App, it's a no brainer!

The Staht t25 Digital Pull Tester kit provides all you need to carry out pull testing on anchors and eye safety bolts up to 25kN, helping you comply with worldwide industry standards and guidance such as: BS8539 & BS7883 NASC guidance TG4:19 AEFAC guidance TN05. Lightweight and easy to use, the kit is supplied in a heavy-duty case.

Components	Description	Weight
TESTER-STAHT-T25-600-044	Staht t25 Digital Pull Tester Kit, in Heavy Duty Case.	9.9



Staht Line Tester Frame (no Load Cell)

KIT 1

The Staht LT is used for testing 8mm (7x7 or 1x19) cable terminations (swage) typically found on safety line systems to a maximum load of 25kN - (5,620 lbf). The manufacturer of the safety line systems will provide test guidance on the force that needs to be applied to the cable termination (swage).

Kit Contents: 300-001: Kit 1 - Line tester frame, M16 Sealed Thrust Nut, Anti - Rotation Spanner, 17mm Socket & Ratchet 3/8 Drive, Wrist Lanyard, Net bag, Heavy Duty Case.

Load Cell not included Best for users who already own a Staht t25 tester.

Kit	Description	Weight
TESTER-STAHT-LT-300-000	KIT 1: Staht Line Tester Frame (EXCLUDES t25 load cell) & Accessories in Case.	



Staht Line Tester Frame Kit (includes Load Cell)

KIT 2

The Staht LT is used for testing 8mm (7x7 or 1x19) cable terminations (swage) typically found on safety line systems to a maximum load of 25kN - (5,620 lbf). The manufacturer of the safety line systems will provide test guidance on the force that needs to be applied to the cable termination (swage).

Kit Contents: 300-006: Kit 2 - Line tester frame, t25 Load Cell, M16 Sealed Thrust Nut, Anti - Rotation Spanner, 17mm Socket & Ratchet 3/8 Drive, Wrist Lanyard, Net bag, Heavy Duty Case.

Kit	Description	Weight
TESTER-STAHT-LT-300-006	KIT 2: Staht Line Tester Frame (INCLUDES t25 load cell) & Accessories in Case.	6.3



Staht LT (Anchor & Line Testing) Kit

KIT 3

The Staht LT (Line Tester) is used for testing 8mm (7x7 or 1x19) cable terminations (swage) typically found on safety line systems to a maximum load of 25kN - (5,620 lbf). The manufacturer of the safety line systems will provide test guidance on the force that needs to be applied to the cable termination (swage).

Kit Contents: Staht LT **Kit 1** (300-001) & 25kN Digital Tensile Tester Kit (**t25 KIT**), c/w Accessories & Heavy-Duty Case.

Kit	Description	Weight
TESTER-STAHT-LT-300-007	KIT 3: Staht Line Tester (KIT 1) & 25kN Digital Tensile Tester (TESTER-STAHT-T25-600-044)	16.2



Staht
LT
Kit 3

Got questions? Contact SafetyLink for more information.

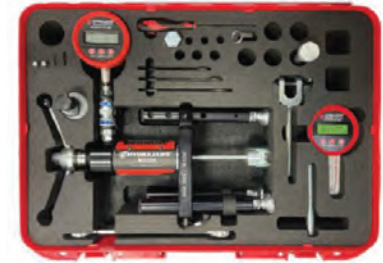
1300 789 545

Hydrajaws Pull Tester - M2000 Scaffold Tie Tester Kit

TESTER-200

The Hydrajaws Scaffold Tie Tester Kit will test all types of anchors most commonly used for anchoring scaffold ties up to a maximum tensile load of 25kN. Adapters include a standard Bolt Test Adapter, M16 Threaded Stud Adapter and M12 Ringbolt Adapter Clevis which means a wide range of fixings can be tested.

- Detachable dual scale 25kN Analogue or Digital Gauge.
- Load spreading bridge with adjustable telescopic legs and swivel feet.
- Bolt tester Adapter with M12 locking Adapter.
- Turning Handle with 22mm integrated nut (for use in confined spaces).
- Calibration certificate (valid for 12 months).
- M12 Ringbolt Adapter Clevis. M16 Threaded Stud Adapters.
- M16 HT Hex set screw. M16 x120mm stud bolt.
- Robust carry case with full operating instructions.



Components	Description	Qty	Weight
TESTER-200-014	M2000 Scaffold Tie Tester Kit with 0-25kN Analogue Gauge	1	12
TESTER-200-014+ADP	M2000 Scaffold Tie Tester Kit with 0-25kN Analogue Gauge + DonutLink Adapter	1	12.6
TESTER-200-015	M2000 Scaffold Tie Tester Kit with 0-25kN Digital Gauge	1	12
TESTER-200-015+ADP	M2000 Scaffold Tie Tester Kit with 0-25kN Digital Gauge + DonutLink Adapter	1	12.6

Hydrajaws Pull Tester - M2000 Scaffold Tie Tester Kit

TESTER-030-007

The upgraded Hydrajaws Safety Lifeline Cable Tester KIT 2 is a complete kit enabling engineers to validate the installation of anchors, eyebolts up to a maximum tensile load of 35kN and swaged components on newly installed or existing engineered lifeline systems to ensure compliance with BS 7883, up to a maximum tensile load of 20kN.

- Hydrajaws 80Nm Verify Torque. 24mm Ratchet spanner.
- Ratchet wrench with 17mm socket. 14mm spanner and Ball Drivers.
- 8mm Barrel clamp. 12mm Slotted adaptor.
- Extension Collar Insert and Extra Extension Rods.
- Knurled adaptor 8mm (10mm and 12mm optional).
- 6mm Hex key. Mini Clevis adaptor. Bolt Test adaptor.
- Slotted and Threaded adaptors. Tool Lanyards.



Components	Description	Qty	Weight
TESTER-030-007	M35+ Safety Lifeline Tester Kit with 0-25kN Digital Gauge	1	17

Hydrajaws Bluetooth Digital System

The Dashboard contains all essential information including:

- All company devices and their calibration dates.
- All company users and licences.
- A GPS map containing all test sites.
- A list of Hydrajaws Approved International Service Centres.
- Download the app from the Google Play Store or the Apple App Store.

The Hydrajaws Bluetooth Digital system allows on-site pull tests to be automatically recorded and compiled into a digital report using the Hydrajaws Bluetooth Digital App on a mobile phone or tablet device. These reports can be sent directly to clients or managers and are stored in the cloud to be accessed remotely anywhere on a browser in a users own company dashboard. The comprehensive report will include all test information including a pass or fail result, a visual results graph, fixing details, site location co-ordinates, date and time. Notes, images and photos taken on-site can also be added. Using the Dashboard a company administrator can review all test reports from all company users. They can also add notes to reports and send them directly to customers.



DONUTLINK ADAPTER

DONUTLINK-ADP

- DonutLink adapter is used to pull test DonutLink Washer on concrete anchors and lifelines.

Components	Description	Materials	Qty	Weight
DONUTLINK-ADP	DonutLink Adapter	Hardened/Tempered Steel	1	0.600



POSITIONING OF CONCRETE ANCHOR

The Concrete Anchor must be in a position easily and safely reached from a safe access point. Concrete anchor should not be positioned close to an edge, minimum distance 150mm. Minimum concrete thickness 150mm.

LOCATING THE REINFORCING STEEL BAR (REO BAR) IN THE CONCRETE

Use Digital metal detector (Example: BOSCH DMO 10) to locate the Reo bar in the concrete when positioning the Concrete Anchor. This ensures reo bars are avoided when drilling.

DRILLING THE HOLE

Drill a hole to a depth and width as suggested in table (opposite page).

PREPARING THE HOLE

The hole must be moisture and dust free. Remove dust using compressed air, small brush, and vacuum cleaner.

INSTALLING THE CONCRETE ANCHOR

- Recommended chemical is Fischer FIS-V.
- Prior to anchor installation, refer to installation procedure for individual anchor product and check chemical is within expiry date.
- The injection cartridge is for use with a standard caulking gun.
- Partially used cartridges can be re-used by changing the mixing nozzle.
- The entire surface of the anchors embedded section must be within the concrete and shall use sufficient adhesive mortar as specified in table (opposite page).



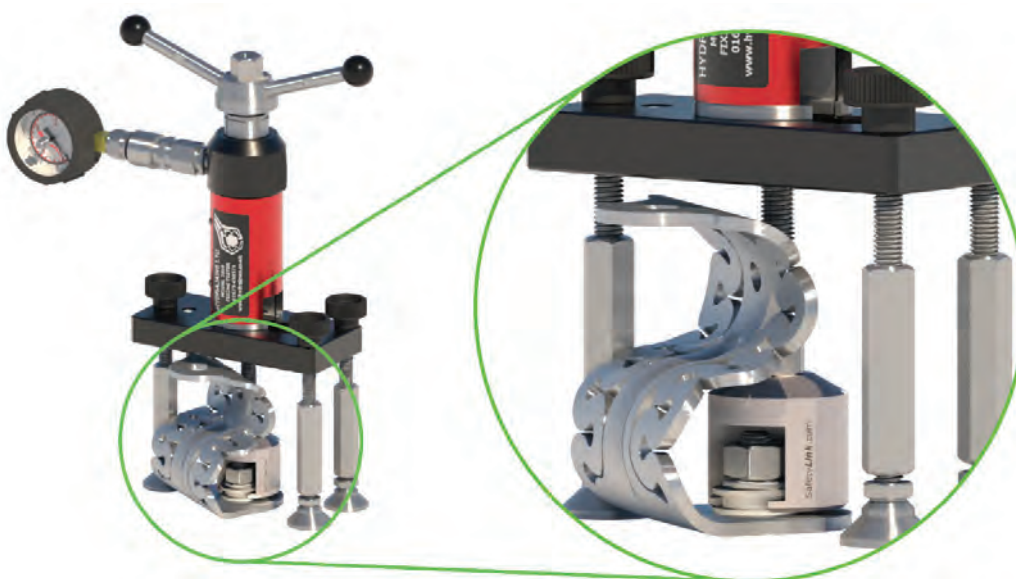
Concrete Chemical Data Sheet





Concrete Installation Video



SafetyLink Online Training



PRODUCT CODE: CON-CHEM-FISV.300

Components	Description	Qty	
CON-CHEM-FISV.300.01	Injection Mortar FIS V Cartridge 300ml	1	
CON-CHEM-FISMR	Static Mixer FIS MR	2	

FIS V 300T: INJECTION MORTAR

APPLICATION	ANCHOR DIAMETER(mm)	DRILL HOLE DIAMETER(mm)	DRILL HOLE DEPTH(mm)	MORTAR/ FIXING(ml)	NO# OF FIXING/ CARTRIDGE
Concrete Insert	24	28	90	40	6
One Piece Eyebolt	16	18	90	15	18
WindowLink	53&25	55&28	20&122	60	4
SwiveLink	24	28	90	40	6
M10x130 Rod – Guardrail	10	12	95	8	35
M12x160 Rod – Tuff Post	12	14	115	10	28
M12x160 Rod – X-Rail	12	14	95	10	28
M16x130 Rod – DonutLink FrogLine	16	18	95	15	18
M16x160 Rod – Tuff Post	16	18	115	15	18
M16x200 Rod – Davit	16	18	140	16	15

CURING TIME FIS V

Cartridge Temperature (mortar)	Gelling Time	Temperature at anchoring base	Curing Time
		- 5°C - ± 0°C	24 hours
+ 0°C - + 5°C	13 minutes	± 0°C - + 5°C	3 hours
+ 5°C - + 10°C	9 minutes	+ 5°C - + 10°C	90 minutes
+ 10°C - + 20°C	5 minutes	+ 10°C - + 20°C	60 minutes
+ 20°C - + 30°C	4 minutes	+ 20°C - + 30°C	45 minutes
+ 30°C - + 40°C	2 minutes	+ 30°C - + 40°C	35 minutes

The above times apply from the moment of contact between resin and hardener in the static mixer.

For installation, the cartridge temperature must be at least +5°C. For longer installation times, ie when interruptions occur in work, the mixer should be replaced.



SafetyLink: BIM-Ready Fall Protection Solutions

As a global leader in fall protection, SafetyLink is proud to offer comprehensive BIM content, making it easier than ever for architects, designers, and engineers to specify and integrate our products into their projects. Our advanced safety systems—including energy-absorbing anchors and engineered lifeline solutions—are designed to exceed industry standards, delivering maximum protection and compliance across a wide range of applications.

Virtual Showroom

Explore our Revit project file (.RVT), featuring preloaded families and types laid out for quick navigation. The file is preformatted for quality assurance, with optimized 2D/3D views and detailed family data to support efficient design and documentation workflows.

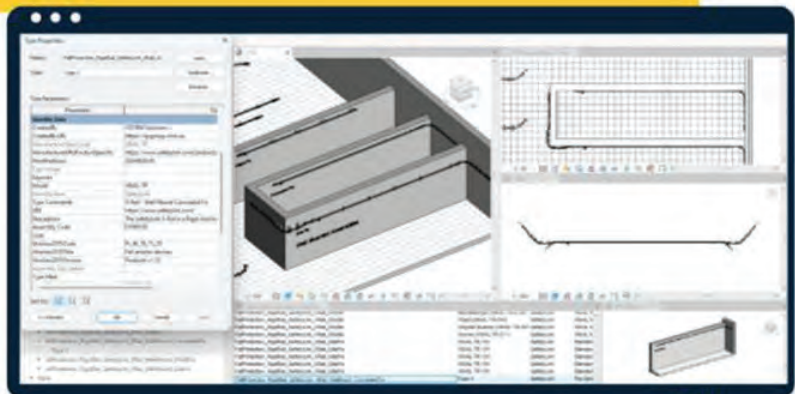
Object Collections

Download a collection zip file, containing a curated selection of BIM objects or high-quality product images—ideal for streamlined project planning, visualizations, and presentations.

<https://www.safetylink.com/bim-content/>



BIM CONTENT ONLINE



- Native Revit Geometry
- Virtual Showroom Available
- Bulk Download Options

enjoy safety.

Got questions? Contact SafetyLink for more information.

1300 789 545

Steps to becoming a qualified SafetyLink product installer

1 Accreditation

Each user must have their Working at Heights accreditation (RIIWH5204D).

The requirements for installation of any fall protection equipment is to be a competent person. The definition of this is someone with suitable skills, knowledge, experience and training in the height safety industry. In order for you to work at heights you must complete a working at heights accreditation. Contact your local training centre.

2 Insurance

Each user/business entity must have correct insurance for installing height safety equipment.

Certification and annual recertification may have an effect on your Public and Products Liability Insurance. Engaging in these activities may also require you to take out or amend your existing Professional Indemnity Insurance. Because policies vary between insurers it is best you speak to your insurance advisor to ensure your coverage will include these activities.

3 Product Training

Each user must complete and pass each course for the product they are purchasing/installing.

SafetyLink's online training portal (Safety Centre) provides online courses on SafetyLink Anchors. Register yourself for free on SafetyLink's website www.safetylink.com/safetycentre. After completing and passing the product course you will receive a certificate to download and provide to your customer. Certificates are valid for 2 years. Personal training is required for installing lifelines, contact SafetyLink.

4 Certification

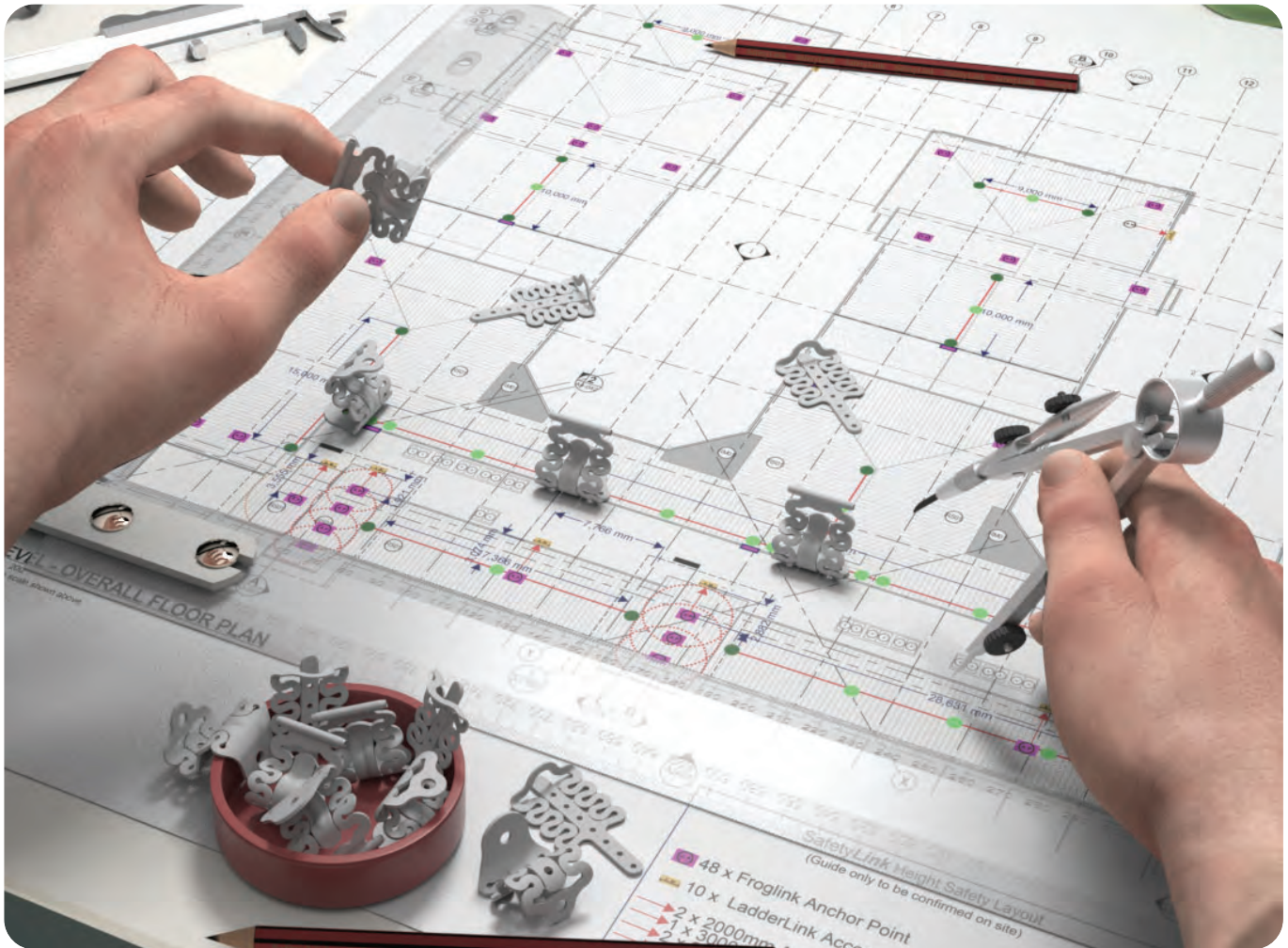
Issue a certificate for height safety system certification upon completion of the project.

On completion supply certification documents with site layout plan, training certificates, product checklist and manuals to the end user. You should also discuss the wording of any proposed certification with your relevant insurer and legal adviser to ensure you are covered in the event of a claim.



Scan QR Code to register
online for training





Got questions? Contact SafetyLink for more information.

SafetyLink's design and planning team are here to help work out the positioning of your fall protection system, ensuring all areas of your roof are accessed safely.

- Things to consider when planning your roof layout:
- Are all areas of your roof protected, allowing complete access when working at heights?
- Are you protected from the ground up, allowing complete access to your roof?
- Detailed comprehensive documentation provided e.g. installation guides, testing results, product sheets should be provided.
- SafetyLink can also provide you with a qualified and reputable installer of SafetyLink products.

Contact our design team at info@safetylink.com and we can plan your fall arrest system for you.



Scan Me

Expert Fall Protection Planning



SCAN ME

Catalogue



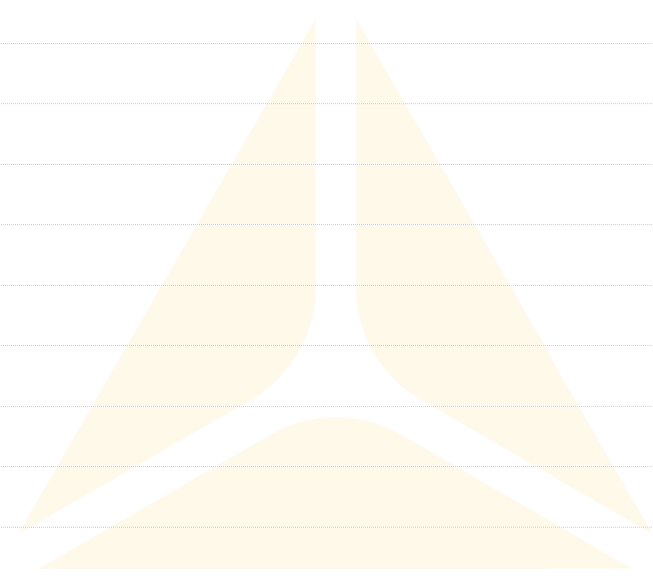
SCAN ME

SafetyLink Online Training



SCAN ME

SafetyLink Website



SAFETYLINK

A DELTA PLUS GROUP COMPANY



Designing, manufacturing and
distributing a full range of PPE.

www.deltaplus.com.au



DELTAPLUS

**© 2018, SafetyLink Pty Ltd,
Australia.**
**Patents : SafetyLink Pty Ltd has
a multitude of patents, patents
pending, design applications,
trademarks and copyrighted
documents both lodged and
issued.**
**Should you wish to know the
progress of our intellectual
property on a specific product
please email us on
info@safetylink.com
and quote the product code.**



Asia-Pacific/The Americas

info@safetylink.com

1300 789 545

Europe/Africa/Middle East

export@safetylink.com

+61 (0)2 4964 1068

Northern Europe

export@safetylink.com

+61 (0)2 4964 1068

www.safetylink.com



FS 707792