

**Global Catalogue  
FastFit Braceless Davit  
2026/2027**



**SAFETYLINK**

A DELTA PLUS GROUP COMPANY



## HEIGHT SAFETY, ACCESS & FALL PROTECTION SYSTEMS

Established in 1998, SafetyLink has become a globally recognised leader in the design, manufacture and distribution of high-quality height safety systems.

Renowned for pioneering the first energy-absorbing anchor point, this innovative technology has since been integrated across the Frog range and extended into our anchor points, lifeline and rail systems, delivering enhanced safety performance across a wide range of applications.

All SafetyLink products are extensively tested to meet and exceed international industry standards. Testing is conducted across a wide range of real-world scenarios, ensuring our systems perform reliably beyond the laboratory. We test to European Standards EN795 and CEN/TS16415, Australian Standards AS/NZS 1891.4 and 5532 and USA Standards OSHA/ANSI 1926.502 and Z359.

# About SafetyLink

SafetyLink takes working at heights seriously, providing comprehensive installation instructions and online training, supported with an experienced technical and design team. Our online platform enables easy access to our learning management system, product information and lifeline system builds all in the one place.

- Supply a large range of height safety systems that protect workers from the ground up
- All products tested and manufactured to current standards
- Access to online training modules 24/7
- Supply of installation guides and product data sheets
- Assisted system design layout and advice
- Extensive technical support with collectively over 100 years of experience in the height safety industry

Visit [www.safetylink.com](http://www.safetylink.com) for the latest training, height safety resources and fall protection products.

# Contents

- FASTFIT BRACELESS DAVIT .....5**
- DAVIT - BRACELESS KITS - MAST 1000mm.....6
- DAVIT - BRACELESS KITS - MAST 1600mm.....7
- DAVIT - BRACELESS KITS - MAST 2200mm.....8
- DAVIT - BRACELESS KITS - MAST 2800mm.....9
- DAVIT - BRACELESS BOOMS .....10
- DAVIT - BRACELESS MASTS.....11
- DAVIT BASES.....12
- RAISED DAVIT ANCHOR BASES STAINLESS STEEL.....14
- RAISED DAVIT ANCHOR BASE GALVANISED .....15
- DAVIT FIXINGS & ACCESSORIES .....16
- PERSONAL PROTECTIVE EQUIPMENT .....19**
- PPE - ROOFERS KITS .....20
- PPE - LANYARDS.....22
- PPE - HARNESSSES.....23
- PPE - ACCESSORIES.....24
- TESTERS .....26**
- STAHT ANCHOR & LINE TESTERS.....26
- HYDRAJAWS PULL TESTER .....27
- SERVICES.....28**
- APPENDIX 2 - CONCRETE CHEMICAL ADHESIVE .....28
- TRAINING .....29
- BIM CONTENT .....30
- EXPERT FALL PROTECTION PLANNING .....31
- DELTA PLUS.....32

# FastFit

## Braceless Davit



SCAN ME

**BRACELESS DAVIT  
INSTALLATION**



SCAN ME

**BRACELESS DAVIT  
CATALOGUE**



SCAN ME

**BRACELESS DAVIT  
WEBSITE**



SCAN ME

**SAFETY CENTRE  
ONLINE TRAINING**



Got questions? Contact SafetyLink for more information.

1300 789 545

SafetyLink's FastFit Braceless Davit is a temporary anchor system designed to provide safe access for raising and lowering personnel at height, including rooftop and parapet applications.

**Key Features:**

- Patent pending Australian Made design
- Braceless configuration for simplified rooftop installation
- Supports one user suspended via shuttle system
- Secondary attachment point for an additional user
- Shuttle allows smooth adjustment along the boom
- Breaks down into two portable components for transport
- Available in multiple boom lengths and mast heights
- Retrofit and precast base mounting options available
- Suitable for limited access and parapet wall applications



# FASTFIT BRACELESS DAVIT

SafetyLink's FastFit Braceless Davit is a temporary height safety anchor system designed to enable safe access for personnel when working at height, particularly in rooftop environments. Its braceless configuration allows for efficient setup while maintaining controlled access over parapet walls, balustrades and other elevated edges where traditional anchoring systems may be restricted.

The system supports one user suspended from the integrated shuttle, with a secondary attachment point available for an additional user at the mast or base. The shuttle is designed to travel smoothly along the boom, providing flexible positioning and improved operational control during use. With a maximum reach of 2.2 metres and mast heights up to 2.8 metres, the system allows effective access in a range of elevated applications.

The FastFit Davit is also capable of material handling up to 500kg when configured appropriately; however, material lifting and personnel support must not be used simultaneously and must follow the installation manual at all times. The system is supplied in modular components with multiple boom and mast configurations to suit varying site requirements, and can be installed using either retrofit or precast base options.

**APPLICATION:**

Temporary or permanent facade access and height safety operations requiring controlled personnel lowering and retrieval over edges and parapets.

**USE:**

Designed for single-user fall protection via shuttle system with secondary attachment support. May be used for material handling in accordance with manufacturer load restrictions and installation guidelines.

## BRACELESS DAVIT KIT - MAST 1000mm / BOOM 1000mm

DAVIT\_KIT.BL10.10

- Braceless Davit Kit
- Mast 1000mm
- Boom 1000mm
- Shuttle included with Boom
- Base not included



Components	Description	Material	Qty	Weight
DAVIT_MAST10.BL	1000mm Braceless Mast	Alum/Stainless & Gal Steel	1	25.60
DAVIT_BOOM10.BL	1000mm Braceless Boom	Alum/Stainless & Gal Steel	1	13.50
				<b>39.10</b>

## BRACELESS DAVIT KIT - MAST 1000mm / BOOM 1600mm

DAVIT\_KIT.BL10.16

- Braceless Davit Kit
- Mast 1000mm
- Boom 1600mm
- Shuttle included with Boom
- Base not included

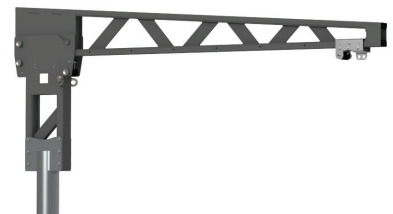


Components	Description	Material	Qty	Weight
DAVIT_MAST10.BL	1000mm Braceless Mast	Alum/Stainless & Gal Steel	1	25.60
DAVIT_BOOM16.BL	1600mm Braceless Boom	Alum/Stainless & Gal Steel	1	18.00
				<b>43.60</b>

## BRACELESS DAVIT KIT - MAST 1000mm / BOOM 2200mm

DAVIT\_KIT.BL10.22

- Braceless Davit Kit
- Mast 1000mm
- Boom 2200mm
- Shuttle included with Boom
- Base not included



Components	Description	Material	Qty	Weight
DAVIT_MAST10.BL	1000mm Braceless Mast	Alum/Stainless & Gal Steel	1	25.60
DAVIT_BOOM22.BL	2200mm Braceless Boom	Alum/Stainless & Gal Steel	1	21.80
				<b>47.40</b>

Got questions? Contact SafetyLink for more information.

#### BRACELESS DAVIT KIT - MAST 1600mm / BOOM 1000mm

DAVIT\_KIT.BL16.10

- Braceless Davit Kit
- Mast 1600mm
- Boom 1000mm
- Shuttle included with Boom
- Base not included



Components	Description	Material	Qty	Weight
DAVIT_MAST16.BL	1600mm Braceless Mast	Alum/Stainless & Gal Steel	1	30.60
DAVIT_BOOM10.BL	1000mm Braceless Boom	Alum/Stainless & Gal Steel	1	13.50
				<b>44.10</b>

#### BRACELESS DAVIT KIT - MAST 1600mm / BOOM 1600mm

DAVIT\_KIT.BL16.16

- Braceless Davit Kit
- Mast 1600mm
- Boom 1600mm
- Shuttle included with Boom
- Base not included



Components	Description	Material	Qty	Weight
DAVIT_MAST16.BL	1600mm Braceless Mast	Alum/Stainless & Gal Steel	1	30.60
DAVIT_BOOM16.BL	1600mm Braceless Boom	Alum/Stainless & Gal Steel	1	18.00
				<b>48.60</b>

#### BRACELESS DAVIT KIT - MAST 1600mm / BOOM 2200mm

DAVIT\_KIT.BL16.22

- Braceless Davit Kit
- Mast 1600mm
- Boom 2200mm
- Shuttle included with Boom
- Base not included

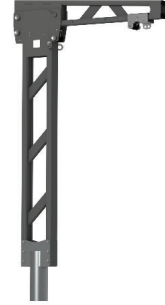


Components	Description	Material	Qty	Weight
DAVIT_MAST16.BL	1600mm Braceless Mast	Alum/Stainless & Gal Steel	1	30.60
DAVIT_BOOM22.BL	2200mm Braceless Boom	Alum/Stainless & Gal Steel	1	21.80
				<b>52.40</b>

## BRACELESS DAVIT KIT - MAST 2200mm / BOOM 1000mm

DAVIT\_KIT.BL22.10

- Braceless Davit Kit
- Mast 2200mm
- Boom 1000mm
- Shuttle included with Boom
- Base not included



Components	Description	Material	Qty	Weight
DAVIT_MAST22.BL	2200mm Braceless Mast	Alum/Stainless & Gal Steel	1	35.70
DAVIT_BOOM10.BL	1000mm Braceless Boom	Alum/Stainless & Gal Steel	1	13.50
				<b>49.20</b>

## BRACELESS DAVIT KIT - MAST 2200mm / BOOM 1600mm

DAVIT\_KIT.BL22.16

- Braceless Davit Kit
- Mast 2200mm
- Boom 1600mm
- Shuttle included with Boom
- Base not included



Components	Description	Material	Qty	Weight
DAVIT_MAST22.BL	2200mm Braceless Mast	Alum/Stainless & Gal Steel	1	35.70
DAVIT_BOOM16.BL	1600mm Braceless Boom	Alum/Stainless & Gal Steel	1	18.00
				<b>53.70</b>

## BRACELESS DAVIT KIT - MAST 2200mm / BOOM 2200mm

DAVIT\_KIT.BL22.22

- Braceless Davit Kit
- Mast 2200mm
- Boom 2200mm
- Shuttle included with Boom
- Base not included



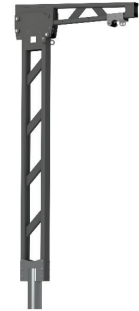
Components	Description	Material	Qty	Weight
DAVIT_MAST22.BL	2200mm Braceless Mast	Alum/Stainless & Gal Steel	1	35.70
DAVIT_BOOM22.BL	2200mm Braceless Boom	Alum/Stainless & Gal Steel	1	21.80
				<b>57.50</b>

Got questions? Contact SafetyLink for more information.

#### BRACELESS DAVIT KIT - MAST 2800mm / BOOM 1000mm

DAVIT\_KIT.BL28.10

- Braceless Davit Kit
- Mast 2800mm
- Boom 1000mm
- Shuttle included with Boom
- Base not included

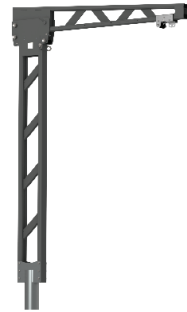


Components	Description	Material	Qty	Weight
DAVIT_MAST28.BL	2800mm Braceless Mast	Alum/Stainless & Gal Steel	1	40.80
DAVIT_BOOM10.BL	1000mm Braceless Boom	Alum/Stainless & Gal Steel	1	13.50
				<b>54.30</b>

#### BRACELESS DAVIT KIT - MAST 2800mm / BOOM 1600mm

DAVIT\_KIT.BL28.16

- Braceless Davit Kit
- Mast 2800mm
- Boom 1600mm
- Shuttle included with Boom
- Base not included

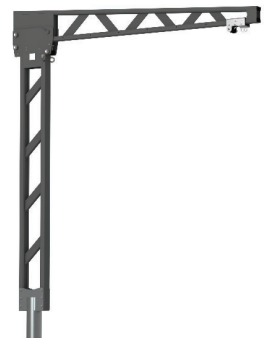


Components	Description	Material	Qty	Weight
DAVIT_MAST28.BL	2800mm Braceless Mast	Alum/Stainless & Gal Steel	1	40.80
DAVIT_BOOM16.BL	1600mm Braceless Boom	Alum/Stainless & Gal Steel	1	18.00
				<b>58.80</b>

#### BRACELESS DAVIT KIT - MAST 2800mm / BOOM 2200mm

DAVIT\_KIT.BL28.22

- Braceless Davit Kit
- Mast 2800mm
- Boom 2200mm
- Shuttle included with Boom
- Base not included



Components	Description	Material	Qty	Weight
DAVIT_MAST28.BL	2800mm Braceless Mast	Alum/Stainless & Gal Steel	1	40.80
DAVIT_BOOM22.BL	2200mm Braceless Boom	Alum/Stainless & Gal Steel	1	21.80
				<b>62.60</b>

## BRACELESS DAVIT BOOM - 1000mm

DAVIT\_BOOM10.BL

- Braceless Davit boom 1000mm. Supplied with moveable Shuttle.
- All attachment points are suitable for abseil or fall arrest.



Components	Description	Material	Qty	Weight
DAVIT_BOOM10.BL	1.0m Davit Boom	Alum/Stainless & Gal Steel	1	13.50
DAVIT_SHUTTLE.BL	Braceless Davit Boom Shuttle	Stainless Steel	1	2.800
DAVIT_BOOM.LABEL03	Braceless Davit Boom Label	Adhesive Traffolyte	1	0.000
				<b>16.30</b>

## BRACELESS DAVIT BOOM - 1600mm

DAVIT\_BOOM16.BL

- Braceless Davit boom 1600mm. Supplied with moveable Shuttle.
- All attachment points are suitable for abseil or fall arrest.



Components	Description	Material	Qty	Weight
DAVIT_BOOM16.BL	1.6m Davit Boom	Alum/Stainless & Gal Steel	1	18.00
DAVIT_SHUTTLE.BL	Braceless Davit Boom Shuttle	Stainless Steel	1	2.800
DAVIT_BOOM.LABEL03	Braceless Davit Boom Label	Adhesive Traffolyte	1	0.000
				<b>20.80</b>

## BRACELESS DAVIT BOOM - 2200mm

DAVIT\_BOOM22.BL

- Braceless Davit boom 2200mm. Supplied with moveable Shuttle.
- All attachment points are suitable for abseil or fall arrest.



Components	Description	Material	Qty	Weight
DAVIT_BOOM22.BL	2.2m Davit Boom	Alum/Stainless & Gal Steel	1	21.80
DAVIT_SHUTTLE.BL	Braceless Davit Boom Shuttle	Stainless Steel	1	2.950
DAVIT_BOOM.LABEL03	Braceless Davit Boom Label	Adhesive Traffolyte	1	0.000
				<b>24.75</b>

## DAVIT SHUTTLE

DAVIT\_SHUTTLE.BL

- Davit moveable shuttle.



Components	Description	Material	Qty	Weight
DAVIT_SHUTTLE .BL	Braceless Davit Shuttle	Stainless Steel	1	2.950

Got questions? Contact SafetyLink for more information.

1300 789 545

### BRACELESS DAVIT MAST - 1000mm

DAVIT\_MAST10.BL

- Braceless Davit mast 1000mm.
- Secondary anchor point included.
- All attachment points are suitable for abseil or fall arrest.



Components	Description	Material	Qty	Weight
DAVIT_MAST10.BL	1000mm Braceless Mast	Alum/Stainless & Gal Steel	1	25.60
DAVIT_BOOM.LABEL03	Braceless Davit Boom Label	Adhesive Traffolyte	1	0.000
				<b>25.60</b>

### BRACELESS DAVIT MAST - 1600mm

DAVIT\_MAST16.BL

- Braceless Davit mast 1600mm.
- Secondary anchor point included.
- All attachment points are suitable for abseil or fall arrest.



Components	Description	Material	Qty	Weight
DAVIT_MAST16.BL	1600mm Braceless Mast	Alum/Stainless & Gal Steel	1	30.60
DAVIT_BOOM.LABEL03	Braceless Davit Boom Label	Adhesive Traffolyte	1	0.000
				<b>30.60</b>

### BRACELESS DAVIT MAST - 2200mm

DAVIT\_MAST22.BL

- Braceless Davit mast 2200mm.
- Secondary anchor point included.
- All attachment points are suitable for abseil or fall arrest.



Components	Description	Material	Qty	Weight
DAVIT_MAST22.BL	2200mm Braceless Mast	Alum/Stainless & Gal Steel	1	35.70
DAVIT_BOOM.LABEL03	Braceless Davit Boom Label	Adhesive Traffolyte	1	0.000
				<b>35.70</b>

### BRACELESS DAVIT MAST - 2800mm

DAVIT\_MAST28.BL

- Braceless Davit mast 2800mm.
- Secondary anchor point included.
- All attachment points are suitable for abseil or fall arrest.



Components	Description	Material	Qty	Weight
DAVIT_MAST28.BL	2800mm Braceless Mast	Alum/Stainless & Gal Steel	1	40.80
DAVIT_BOOM.LABEL03	Davit Boom Label	Adhesive Traffolyte	1	0.000
				<b>40.80</b>

## DAVIT BASE - FIXED FLOOR MOUNT

DAVIT\_BASE01

- Fixed Floor Mount Davit Base to be secured with Anchor Rods, Cast-In Cage or Steel Fixings.
- Davit base handles are rated anchor points.



Components	Description	Material	Qty	Weight
DAVIT_BASE01_WELD	Davit Floor Mount Base Weldment	Galvanised Steel	1	24.50

## DAVIT BASE - FIXED FLOOR MOUNT

DAVIT\_BASE01.WP

- Fixed Floor Mount Davit Base to be secured with Anchor Rods, Cast-In Cage or Steel Fixings.
- One (1) base required for each abseil location.
- A fixed Davit base with drain holes to allow water to exit.
- Davit base handles are rated anchor points.



Components	Description	Material	Qty	Weight
DAVIT_BASE01.WP	Davit Floor Mount Base Weldment	Galvanised Steel	1	24.50

## DAVIT BASE - CONCEALED FIXED FLOOR MOUNT

DAVIT\_BASE02.01

- Fixed Floor Mount Davit Base to be secured with Anchor Rods, Cast-In Cage or Steel Fixings.
- Use with removable sleeve - DAVIT\_BASE02.02.
- One (1) base required for each abseil location.



Components	Description	Material	Qty	Weight
DAVIT_BASE02.01	Davit Fixed Base Weldment	Galvanised Steel	1	15.70

## DAVIT BASE - CONCEALED FIXED FLOOR MOUNT

DAVIT\_BASE02.04

- Fixed Floor Mount Davit Base to be secured with Anchor Rods, Cast-In Cage or Steel Fixings.
- Flat based design may assist with waterproofing.
- Use with removable sleeve - DAVIT\_BASE02.02.
- One (1) base required for each abseil location.



Components	Description	Material	Qty	Weight
DAVIT_BASE02.04	Davit Fixed Base Weldment	Galvanised Steel	1	18.50

## DAVIT BASE - REMOVABLE SLEEVE FLOOR MOUNT

DAVIT\_BASE02.02

- Davit removable floor mount base sleeve, use with fixed base - DAVIT\_BASE02.01 & DAVIT\_BASE02.04.
- One (1) base required for each davit arm.



Components	Description	Material	Qty	Weight
DAVIT_BASE02.02_WELD	Davit Removable Base Sleeve Weldment	Galvanised Steel	1	15.80

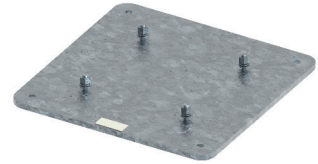
Got questions? Contact SafetyLink for more information.

1300 789 545

### DAVIT BASE - CONCEALED FIXED FLOOR MOUNT

DAVIT\_BASE09

- Fixed Floor Mount Davit Base to be secured with Anchor Rods, Cast-In Cage or Steel Fixings.
- Used to adapt Davit Floor Mount Base for 20MPa concrete.
- One (1) base required for each abseil location.



Components	Description	Material	Qty	Weight
DAVIT_BASE09_WELD	Floor Mount Weldment Adaptor for 20MPa	Galvanised Steel	1	44.21
WASHER M16_Spring_Gal	Spring Washer: M16 Gal	Mild Steel	4	0.005
WASHER M16-8.8	Washer: M16 Structural HDG	Mild Steel	4	0.005
NUT M16-8.8	Nut: M16 Structural HDG	Mild Steel	4	0.005
				<b>45.71</b>

### DAVIT BASE - CONCEALED FIXED WALL MOUNT

DAVIT\_BASE04.01

- Davit Base to be secured to wall with Anchor Rods or Steel Fixings, use with removable sleeve - DAVIT\_BASE04.02.
- One (1) base required for each abseil location.
- Standard Concrete Install: suitable for DAVIT\_BOOM10 and DAVIT\_BOOM16.
- Standard Steel Install: suitable for DAVIT\_BOOM10, DAVIT\_BOOM16 and DAVIT\_BOOM22.



Components	Description	Material	Qty	Weight
DAVIT_BASE04.01_WELD	Davit Wall Mount Fixed Base Weldment	Galvanised Steel	1	13.70

### DAVIT BASE - REMOVABLE SLEEVE WALL MOUNTED

DAVIT\_BASE04.02

- Use with fixed base - DAVIT\_BASE04.01.
- One (1) base required for each davit arm.
- Standard Concrete Install: suitable for DAVIT\_BOOM10 and DAVIT\_BOOM16.
- Standard Steel Install: suitable for DAVIT\_BOOM10, DAVIT\_BOOM16 and DAVIT\_BOOM22.



Components	Description	Material	Qty	Weight
DAVIT_BASE04.02_WELD	Davit Removable Base Sleeve Weldment	Galvanised Steel	1	21.04

### DAVIT BASE - FIXED WALL MOUNT

DAVIT\_BASE10

- One (1) base required for each davit arm.
- Standard Concrete Install: suitable for DAVIT\_BOOM10 and DAVIT\_BOOM16.
- Standard Steel Install: suitable for DAVIT\_BOOM10, DAVIT\_BOOM16 and DAVIT\_BOOM22.



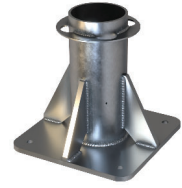
Components	Description	Material	Qty	Weight
DAVIT_BASE10_WELD	Davit Wall Mount Base Weldment	Galvanised Steel	1	30.0
DAVIT_BASE.SLEEVE	Davit Base Sleeve	PVC	1	0.50
				<b>30.5</b>

### DAVIT BASE - FLOOR MOUNTED RAISED 400MM

DAVIT\_BASE07.400

- Raised floor mounted base kit: 400mm.
- Davit Base to be secured with Anchor Rods or Cast-In Cage.
- Designed to be submerged into garden beds, water and other mediums.

Components	Description	Material	Qty	Weight
DAVIT_BASE07.400_WELD	Davit Floor Mount Base Weldment 400mm	316SS	1	41.20
DAVIT_BASE.SLEEVE.02	Davit Raised Floor Mount Base Sleeve	PVC	1	0.500
DAVIT_BASE.CAP	Davit Base Cap	316SS	1	1.662
				<b>43.36</b>



### DAVIT BASE - FLOOR MOUNTED RAISED 600MM

DAVIT\_BASE07.600

- Raised floor mounted base kit: 600mm.
- Davit Base to be secured with Anchor Rods or Cast-In Cage.
- Designed to be submerged into garden beds, water and other mediums.

Components	Description	Material	Qty	Weight
DAVIT_BASE07.600_WELD	Davit Floor Mount Base Weldment 600mm	316SS	1	46.70
DAVIT_BASE.SLEEVE.02	Davit Raised Floor Mount Base Sleeve	PVC	1	0.500
DAVIT_BASE.CAP	Davit Base Cap	316SS	1	1.662
				<b>48.86</b>



### DAVIT BASE - FLOOR MOUNTED RAISED 800MM

DAVIT\_BASE07.800

- Raised floor mounted base kit: 800mm.
- Davit Base to be secured with Anchor Rods or Cast-In Cage.
- Designed to be submerged into garden beds, water and other mediums.

Components	Description	Material	Qty	Weight
DAVIT_BASE07.800_WELD	Davit Floor Mount Base Weldment 800mm	316SS	1	52.30
DAVIT_BASE.SLEEVE.02	Davit Raised Floor Mount Base Sleeve	PVC	1	0.500
DAVIT_BASE.CAP	Davit Base Cap	316SS	1	1.662
				<b>54.46</b>



### DAVIT BASE - FLOOR MOUNTED RAISED 1000MM

DAVIT\_BASE07.1000

- Raised floor mounted base kit: 1000mm.
- Davit Base to be secured with Anchor Rods or Cast-In Cage.
- Designed to be submerged into garden beds, water and other mediums.

Components	Description	Material	Qty	Weight
DAVIT_BASE07.1000_WELD	Davit Floor Mount Base Weldment 1000mm	316SS	1	57.80
DAVIT_BASE.SLEEVE.02	Davit Raised Floor Mount Base Sleeve	PVC	1	0.500
DAVIT_BASE.CAP	Davit Base Cap	316SS	1	1.662
				<b>59.96</b>



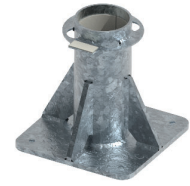
Got questions? Contact SafetyLink for more information.

1300 789 545

### DAVIT BASE - FLOOR MOUNTED RAISED 400MM

DAVIT\_BASE08.400

- Raised floor mounted base kit: 400mm.
- Davit Base to be secured with Anchor Rods or Cast-In Cage.
- Not suitable for submersion in soil, water, or other environments.



Components	Description	Material	Qty	Weight
DAVIT_BASE08.400_WELD	Davit Floor Mount Base Weldment 400mm	Galvanised	1	36.72
DAVIT_BASE.SLEEVE.02	Davit Raised Floor Mount Base Sleeve	PVC	1	0.500
				<b>38.88</b>

### DAVIT BASE - FLOOR MOUNTED RAISED 600MM

DAVIT\_BASE08.600

- Raised floor mounted base kit: 600mm.
- Davit Base to be secured with Anchor Rods or Cast-In Cage.
- Not suitable for submersion in soil, water, or other environments.



Components	Description	Material	Qty	Weight
DAVIT_BASE08.600_WELD	Davit Floor Mount Base Weldment 600mm	Galvanised	1	42.35
DAVIT_BASE.SLEEVE.02	Davit Raised Floor Mount Base Sleeve	PVC	1	0.500
				<b>44.51</b>

### DAVIT BASE - FLOOR MOUNTED RAISED 800MM

DAVIT\_BASE08.800

- Raised floor mounted base kit: 800mm.
- Davit Base to be secured with Anchor Rods or Cast-In Cage.
- Not suitable for submersion in soil, water, or other environments.



Components	Description	Material	Qty	Weight
DAVIT_BASE08.800_WELD	Davit Floor Mount Base Weldment 800mm	Galvanised	1	47.94
DAVIT_BASE.SLEEVE.02	Davit Raised Floor Mount Base Sleeve	PVC	1	0.500
				<b>50.10</b>

### DAVIT BASE - FLOOR MOUNTED RAISED 1000MM

DAVIT\_BASE08.1000

- Raised floor mounted base kit: 1000mm.
- Davit Base to be secured with Anchor Rods or Cast-In Cage.
- Not suitable for submersion in soil, water, or other environments.



Components	Description	Material	Qty	Weight
DAVIT_BASE08.1000_WELD	Davit Floor Mount Base Weldment 1000mm	Galvanised	1	53.60
DAVIT_BASE.SLEEVE.02	Davit Raised Floor Mount Base Sleeve	PVC	1	0.500
				<b>55.76</b>

## DAVIT PLANTER BASE - PROOF LOADING KIT

DAVIT\_BASE07.PROOF

- Raised floor mounted base Proof Loading Kit.

Components	Description	Material	Qty	Weight
DAVIT_BASE07.PROOF.400	Proof Loading Kit 400mm	PVC	1	1.480
DAVIT_BASE07.PROOF.600	Proof Loading Kit 600mm	PVC	1	1.770
DAVIT_BASE07.PROOF.800	Proof Loading Kit 800mm	PVC	1	2.010
DAVIT_BASE07.PROOF.1000	Proof Loading Kit 1000mm	PVC	1	2.350



## DAVIT PLANTER BASE - PROOF LOADING TOOL

DAVIT\_BASE07.TOOL

- Raised floor mounted base Proof Loading Tool.

Components	Description	Material	Qty	Weight
DAVIT_BASE07.TOOL.400	Proof Loading Kit 400mm	Steel	1	0.830
DAVIT_BASE07.TOOL.600	Proof Loading Kit 600mm	Steel	1	1.140
DAVIT_BASE07.TOOL.800	Proof Loading Kit 800mm	Steel	1	1.460
DAVIT_BASE07.TOOL.1000	Proof Loading Kit 1000mm	Steel	1	1.760



## DAVIT SLEEVE

DAVIT\_BASE.SLEEVE

- Davit sleeve, used inside davit bases.

Components	Description	Material	Qty	Weight
DAVIT_BASE.SLEEVE	Davit Base Sleeve	PVC	1	0.500

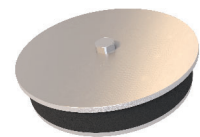


## DAVIT CAP

DAVIT\_BASE.CAP

- Davit cap is used to cap off sleeve on davit base when not in use.

Components	Description	Material	Qty	Weight
DAVIT_BASE.CAP	Davit Base Cap	316SS	1	1.662



## DAVIT FIXING - Concrete Insert Anchor Rod Kit for Davit

CONCL014

- Concrete Insert Anchor Rod for fixing Davit to concrete structures.

Components	Description	Material	Qty	Weight
ROD-per metre M16-GAL	Threaded Rod M16 Galvanised 0.82m	Galvanised	4	0.325
NUT M16_GAL_JOINER	M16 Gal Concrete Insert Anchor 240mm	Galvanised	4	1.098
CONCL006	M16 Brass Bolt for Concrete Insert	Brass	4	0.037
				<b>1.460</b>



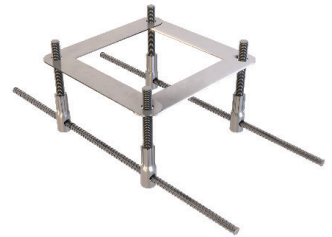
Got questions? Contact SafetyLink for more information.

1300 789 545

### DAVIT FIXING - CAST IN CONCRETE (Galvanised)

#### DAVIT\_BASE05

- Concrete Cast-In Cage for installation prior to pouring concrete.



Components	Description	Material	Qty	Weight
DAVIT_BASE05.01	Stud, Cast In Cage, Davits	Galvanised	4	1.770
DAVIT_BASE05.02	Casting Jig, Cast In Cage, Davits	Galvanised	2	0.366
CON-CAST.02	12mm Reo Bar 6m, Length 595mm	Galvanised	2	0.539
WASHER M16_Spring_Gal	Spring Washer: M16 Gal	Galvanised	4	0.011
WASHER M16-8.8	Washer: M16 Structural HDG	Galvanised	4	0.011
NUT M16-8.8	Nut: M16 Structural HDG	Galvanised	8	0.030
				<b>9.218</b>

### DAVIT FIXING - CAST IN CONCRETE (316 Stainless Steel)

#### DAVIT\_BASE05-SS

- Concrete Cast-In Cage for installation prior to pouring concrete.



Components	Description	Material	Qty	Weight
DAVIT_BASE05-SS.01	Stud, Cast In Cage, Davits	316SS	4	0.490
DAVIT_BASE05.02	Casting Jig, Cast In Cage, Davits	316SS	2	0.366
CON-CAST.02	12mm Reo Bar 6m, Length 595mm	316SS	2	0.539
WASHER M16_Spring_316	Spring Washer: M16	316SS	4	0.011
WASHER M16_316SS	Washer: M16	316SS	4	0.005
NUT M16_316SS	Nut: M16	316SS	8	0.029
				<b>4.066</b>

### DAVIT FIXING - RETRO CONCRETE

#### CON-M16X200-DONUT

- Concrete Anchor Rod for fixing Davit to concrete structures.



Components	Description	Material	Qty	Weight
ROD-M16x200mm	Anchor Rod M16X200 (45 degree cut)	316SS	1	0.247
NUT M16_316	M16 Nut	316SS	1	0.029
WASHER M16_Spring_316	M16 Spring Washer	316SS	1	0.011
WASHER M16_DONUT	M16 Donut Washer	316SS	1	0.028
WASHER M16_NYLON	M16 Nylon Washer (Black)	Nylon	1	0.001
				<b>0.316</b>

### DAVIT FIXING - RETRO CONCRETE (REMOVABLE)

#### CONCL013

- Concrete Anchor Insert for fixing Davit to concrete structures.



Components	Description	Material	Qty	Weight
BOLT-M16x50mm-SS	Bolt: M16x50mm Set Screw	316SS	1	0.100
CON-INSERT-125	ConcreteLink Insert: M16 ID x 125mm	316SS	1	0.273
WASHER M16_DONUT	Washer: M16 DonutLink	316SS	1	0.028
WASHER M16_SHOULDER_NYLON	Washer: M16 Shoulder	Nylon	1	0.003
CONCL006	Brass Bolt for Concrete Insert	Brass	1	0.037
WASHER M16_Spring_316	Washer: M16 Spring	316SS	1	0.011
WASHER M16_NYLON	M16 Nylon Washer (Black)	Nylon	1	0.001
				<b>0.453</b>

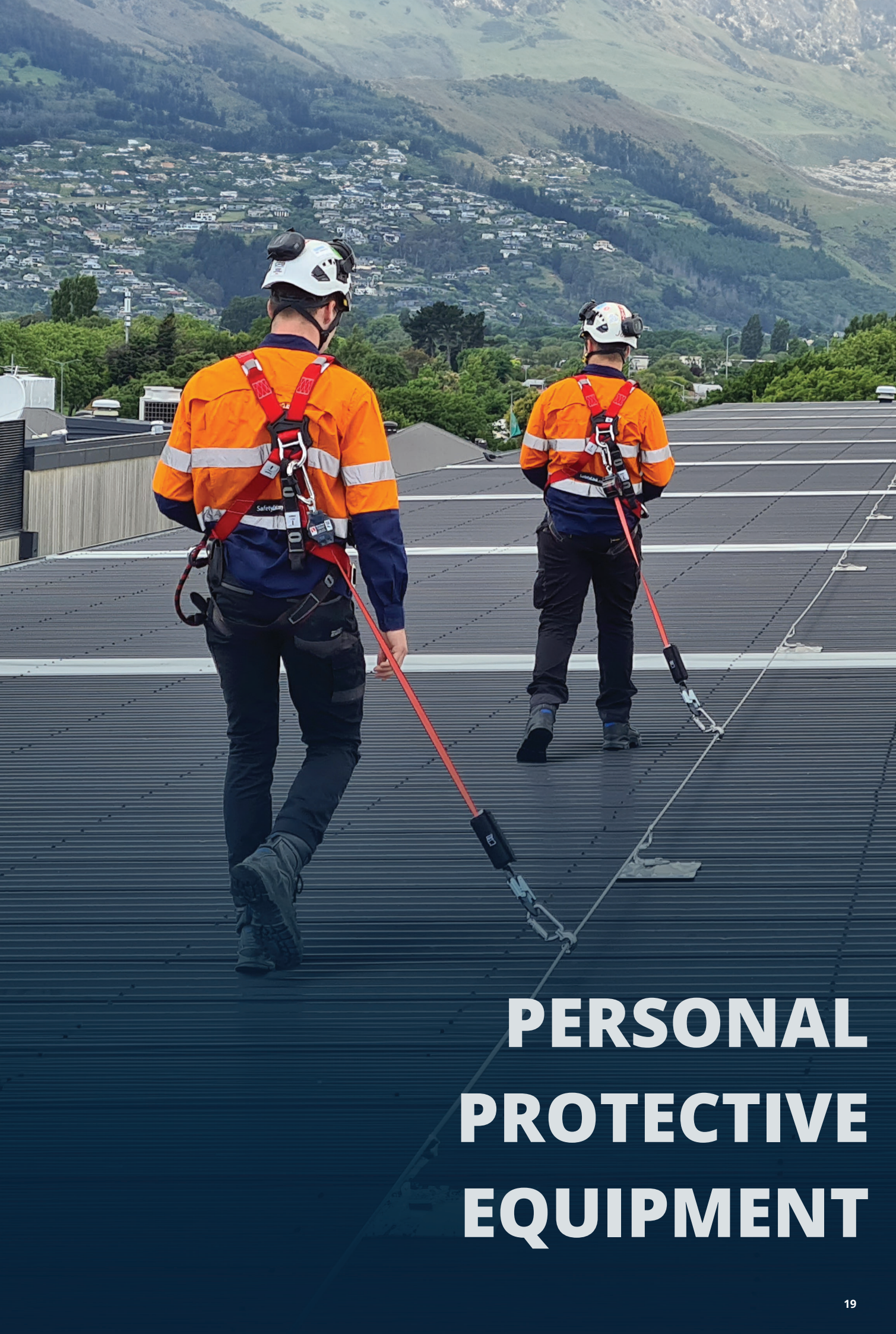
## PERSONAL PROTECTIVE EQUIPMENT

SafetyLink's PPE range provides reliable, compliant personal protective equipment designed to support safe working at heights and in hazardous environments. From essential height safety gear such as harnesses, kits and lifelines through to a comprehensive selection of head, hand, eye, hearing, respiratory and protective workwear, the range delivers durable, site-ready protection for demanding industrial applications.

Got questions? Contact SafetyLink for more information.

1300 789 545

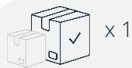




# PERSONAL PROTECTIVE EQUIPMENT

# PPE - ROOFERS KITS

AS/NZS1891.1:2020  
AS/NZS 1891.5  
AS/NZS 1891.3



## DP\_ROOFKIT\_SL\_DP12GT.20

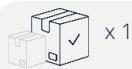
### Roof Workers Kit

WAUHAR12 Harness S,M,L or XL,XXL: Ergonomic design for comfort and protection | Adjustable Energy-Absorbing Rope Line – 20m or 30m | Anchor Strap : 1.5m red 25mm webbing strap with 21kN rating | High-Strength Karabiners | Gear Bag.



**Available Options:** Roofers Kit S,M,L with 20M Rope line: DP\_ROOFKIT\_SL\_DP12GT.20  
Roofers Kit XL, XXL with 20M Rope line: DP\_ROOFKIT\_SL\_DP12XX.20  
Roofers Kit S,M,L with 30M Rope line: DP\_ROOFKIT\_SL\_DP12GT.30  
Roofers Kit XL, XXL with 30M Rope line: DP\_ROOFKIT\_SL\_DP12XX.30

AS/NZS1891.1:2020  
AS/NZS 1891.5  
AS/NZS 1891.3



## DP\_ROOFKIT\_SL\_DP14GT.20

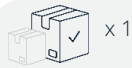
### Roof Workers Kit

WAUHAR14 Harness S,M,L or XL,XXL: Ergonomic design for comfort and protection | Adjustable Energy-Absorbing Rope Line – 20m or 30m | Anchor Strap : 1.5m red 25mm webbing strap with 21kN rating | High-Strength Karabiners | Gear Bag.



**Available Options:** Roofers Kit S,M,L with 20M Rope line: DP\_ROOFKIT\_SL\_DP14GT.20  
Roofers Kit XL, XXL with 20M Rope line: DP\_ROOFKIT\_SL\_DP14XX.20  
Roofers Kit S,M,L with 30M Rope line: DP\_ROOFKIT\_SL\_DP14GT.30  
Roofers Kit XL, XXL with 30M Rope line: DP\_ROOFKIT\_SL\_DP14XX.30

AS/NZS1891.1:2020  
AS/NZS 1891.5  
AS/NZS 1891.3



## DP\_ROOFKIT\_SL\_DP32MGT.20

### Roof Workers Kit

WAUHAR32 Harness S,M,L or XL,XXL: Ergonomic design for comfort and protection | Adjustable Energy-Absorbing Rope Line – 20m or 30m | Anchor Strap : 1.5m red 25mm webbing strap with 21kN rating | High-Strength Karabiners | Gear Bag.



**Available Options:** Roofers Kit S,M,L with 20M Rope line: DP\_ROOFKIT\_SL\_DP32MGT.20  
Roofers Kit XL, XXL with 20M Rope line: DP\_ROOFKIT\_SL\_DP32MXX.20  
Roofers Kit S,M,L with 30M Rope line: DP\_ROOFKIT\_SL\_DP32MGT.30  
Roofers Kit XL, XXL with 30M Rope line: DP\_ROOFKIT\_SL\_DP32MXX.30

AS/NZS1891.1:2020  
AS/NZS 1891.5  
AS/NZS 1891.3



## DP\_ROOFKIT\_SL\_DP35MGT.20

### Roof Workers Kit

WAUHAR35 Harness S,M,L or XL,XXL: Ergonomic design for comfort and protection | Adjustable Energy-Absorbing Rope Line – 20m or 30m | Anchor Strap : 1.5m red 25mm webbing strap with 21kN rating | High-Strength Karabiners | Gear Bag.



**Available Options:** Roofers Kit S,M,L with 20M Rope line: DP\_ROOFKIT\_SL\_DP35MGT.20  
Roofers Kit XL, XXL with 20M Rope line: DP\_ROOFKIT\_SL\_DP35MXX.20  
Roofers Kit S,M,L with 30M Rope line: DP\_ROOFKIT\_SL\_DP35MGT.30  
Roofers Kit XL, XXL with 30M Rope line: DP\_ROOFKIT\_SL\_DP35MXX.30

Got questions? Contact SafetyLink for more information.

1300 789 545

AS/NZS1891.1:2020  
AS/NZS 1891.5  
AS/NZS 1891.3



**DP\_ROOFKIT\_DP12GT.20EG**

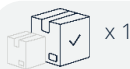
Roof Workers Kit with Eyewear and Gloves | WAUHAR12 Harness S,M,L or XL,XXL: Ergonomic design for comfort and protection | Adjustable Energy-Absorbing Rope Line - 20m or 30m | Anchor Strap : 1.5m red 25mm webbing strap with 21kN rating | High-Strength Karabiners | Gear Bag | Eyewear : DP\_IRAZUIN | Gloves: DP\_VE727NO09.



**Available Options:**

Roofers Kit S,M,L with 20M Rope line, Eyewear & Gloves: DP\_ROOFKIT\_DP12GT.20EG  
Roofers Kit XL, XXL with 20M Rope line, Eyewear & Gloves: DP\_ROOFKIT\_DP12XX.20EG  
Roofers Kit S,M,L with 30M Rope line, Eyewear & Gloves: DP\_ROOFKIT\_DP12GT.30EG  
Roofers Kit XL, XXL with 30M Rope line, Eyewear & Gloves: DP\_ROOFKIT\_DP12XX.30EG

AS/NZS1891.1:2020  
AS/NZS 1891.5  
AS/NZS 1891.3



**DP\_ROOFKIT\_DP14GT.20EG**

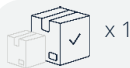
Roof Workers Kit with Eyewear and Gloves | WAUHAR14 Harness S,M,L or XL,XXL: Ergonomic design for comfort and protection | Adjustable Energy-Absorbing Rope Line - 20m or 30m | Anchor Strap : 1.5m red 25mm webbing strap with 21kN rating | High-Strength Karabiners | Gear Bag | Eyewear : DP\_IRAZUIN | Gloves: DP\_VE727NO09.



**Available Options:**

Roofers Kit S,M,L with 20M Rope line, Eyewear & Gloves: DP\_ROOFKIT\_DP14GT.20EG  
Roofers Kit XL, XXL with 20M Rope line, Eyewear & Gloves: DP\_ROOFKIT\_DP14XX.20EG  
Roofers Kit S,M,L with 30M Rope line, Eyewear & Gloves: DP\_ROOFKIT\_DP14GT.30EG  
Roofers Kit XL, XXL with 30M Rope line, Eyewear & Gloves: DP\_ROOFKIT\_DP14XX.30EG

AS/NZS1891.1:2020  
AS/NZS 1891.5  
AS/NZS 1891.3



**DP\_ROOFKIT\_DP32MGT.20EG**

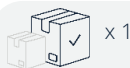
Roof Workers Kit with Eyewear and Gloves | WAUHAR32 Harness S,M,L or XL,XXL: Ergonomic design for comfort and protection | Adjustable Energy-Absorbing Rope Line - 20m or 30m | Anchor Strap : 1.5m red 25mm webbing strap with 21kN rating | High-Strength Karabiners | Gear Bag | Eyewear : DP\_IRAZUIN | Gloves: DP\_VE727NO09.



**Available Options:**

Roofers Kit S,M,L with 20M Rope line, Eyewear & Gloves: DP\_ROOFKIT\_DP32MGT.20EG  
Roofers Kit XL, XXL with 20M Rope line, Eyewear & Gloves: DP\_ROOFKIT\_DP32MXX.20EG  
Roofers Kit S,M,L with 30M Rope line, Eyewear & Gloves: DP\_ROOFKIT\_DP32MGT.30EG  
Roofers Kit XL, XXL with 30M Rope line, Eyewear & Gloves: DP\_ROOFKIT\_DP32MXX.30EG

AS/NZS1891.1:2020  
AS/NZS 1891.5  
AS/NZS 1891.3



**DP\_ROOFKIT\_DP35MGT.20EG**

Roof Workers Kit with Eyewear and Gloves | WAUHAR35 Harness S,M,L or XL,XXL: Ergonomic design for comfort and protection | Adjustable Energy-Absorbing Rope Line - 20m or 30m | Anchor Strap : 1.5m red 25mm webbing strap with 21kN rating | High-Strength Karabiners | Gear Bag | Eyewear : DP\_IRAZUIN | Gloves: DP\_VE727NO09.



**Available Options:**

Roofers Kit S,M,L with 20M Rope line, Eyewear & Gloves: DP\_ROOFKIT\_DP35MGT.20EG  
Roofers Kit XL, XXL with 20M Rope line, Eyewear & Gloves: DP\_ROOFKIT\_DP35MXX.20EG  
Roofers Kit S,M,L with 30M Rope line, Eyewear & Gloves: DP\_ROOFKIT\_DP35MGT.30EG  
Roofers Kit XL, XXL with 30M Rope line, Eyewear & Gloves: DP\_ROOFKIT\_DP35MXX.30EG

## Single Lanyard with Tear Web Energy Absorbing

DP\_WAUAN203200NN

- Single Lanyard with Tear Web Energy Absorbing
- Harness Connector: Karabiner. Anchor Connector: Karabiner.
- Orange Webbing.



Components	Description	Material	Qty	Weight
DP_WAUAN203200NN	Single Lanyard with Tear Web Energy Absorbing	Polyester	1	0.850

## Premium Single Lanyard with Tear Web Energy Absorbing and Elasticised Leg

DP\_WAUAN235200NN

- Premium Single Lanyard with Tear Web Energy Absorbing and Elasticised Leg.
- Harness Connector: Karabiner. Anchor Connector: Karabiner.
- Black Webbing with Orange Fleck.



Components	Description	Material	Qty	Weight
DP_WAUAN235200NN	Single Lanyard. Tear Web Energy Absorbing Elasticised Leg	Polyester	1	0.800

## Premium Single Lanyard with Tear Web Energy Absorbing and Elasticised Leg

DP\_WAUAN235200JJ

- Premium Single Lanyard with Tear Web Energy Absorbing and Elasticised Leg.
- Harness Connector: Snap Hook. Anchor Connector: Snap Hook.
- Black Webbing with Orange Fleck.



Components	Description	Material	Qty	Weight
DP_WAUAN235200JJ	Single Lanyard with Tear Web Energy Absorbing and Elasticised Leg	Polyester	1	1.100

## Premium Single Lanyard with Tear Web Energy Absorbing and Elasticised Leg

DP\_WAUAN235200JW

- Premium Single Lanyard with Tear Web Energy Absorbing and Elasticised Leg.
- Harness Connector: Snap Hook. Anchor Connector: Rebar Hook.
- Black Webbing with Orange Fleck.



Components	Description	Material	Qty	Weight
DP_WAUAN235200JW	Single Lanyard with Tear Web Energy Absorbing and Elasticised Leg	Polyester	1	1.550

## Premium Twin Lanyard with Tear Web Energy Absorbing and Elasticised Legs

DP\_WAUAN245200JWW

- Premium Twin Lanyard with Tear Web Energy Absorbing and Elasticised Legs
- Harness Connector: Snap Hook. Anchor Connector: Rebar Hook.
- Black Webbing with Orange Fleck.



Components	Description	Material	Qty	Weight
DP_WAUAN245200JWW	Twin Lanyard with Tear Web Energy Absorbing and Elasticised Legs	Polyester	1	2.400

**DELTA PLUS FULL BODY HARNESS**

**DP\_WAUHAR12**

- Centre Rear D ring attachment.
- Two (2) Centre Front Hoops.
- Orange Webbing with Black Stitching.
- Aluminium Fittings.

**TWO (2) SIZES AVAILABLE**

Components	Description	Material	Qty	Weight
DP_WAUHAR12GT	Delta Plus Full Body Harness	Polyester	S,M,L	0.730
DP_WAUHAR12XX	Delta Plus Full Body Harness	Polyester	XL,XXL	0.730



**DELTA PLUS FULL BODY HARNESS**

**DP\_WAUHAR14**

- Centre Rear D ring attachment.
- Two (2) Centre Front Hoops.
- Includes Belt with Side D Rings and Restraint D Ring.
- Orange Webbing with Black Stitching.
- Aluminium Fittings.

**TWO (2) SIZES AVAILABLE**

Components	Description	Material	Qty	Weight
DP_WAUHAR14GT	Delta Plus Full Body Harness with Belt	Polyester	S,M,L	1.100
DP_WAUHAR14XX	Delta Plus Full Body Harness with Belt	Polyester	XL,XXL	1.100



**DELTA PLUS PREMIUM RIGGER FULL BODY HARNESS**

**DP\_WAUHAR32M**

- Sternal Loops, Dorsal D-Ring.
- Quick Connect Legs, Pull Through Torso.
- Quick Connect Chest.
- Grey Webbing with Green Stitching.
- Aluminium Fittings.

**TWO (2) SIZES AVAILABLE**

Components	Description	Material	Qty	Weight
DP_WAUHAR32MGT	Premium Rigger Full Body Harness	Polyester	S,M,L	1.400
DP_WAUHAR32MXX	Premium Rigger Full Body Harness	Polyester	XL,XXL	1.400



**DELTA PLUS PREMIUM MULTI-PURPOSE BODY HARNESS**

**DP\_WAUHAR35M**

- Sternal Loops, Dorsal D-Ring.
- Belt/Side Drings, Rear Waist D-Ring, Quick Connect Legs.
- Pull Through Torso, Quick Connect Chest.
- Grey Webbing with Green Stitching.
- Aluminium Fittings.

**TWO (2) SIZES AVAILABLE**

Components	Description	Material	Qty	Weight
DP_WAUHAR35MGT	Premium Multi-purpose Body Harness with Belt	Polyester	S,M,L	2.000
DP_WAUHAR35MXX	Premium Multi-purpose Body Harness with Belt	Polyester	XL,XXL	2.000



## DELTA PLUS GEAR BAG

DP\_TC008

- Delta Plus Gear Bag
- Material: PVC
- Size: 80cm x 46cm x 30cm unfolded.



Components	Description	Material	Qty	Weight
DP_TC008	Delta Plus Gear Bag	PVC	1	0.414

## ROPE LINE 20M & 30M

ROPELN

- Adjustable Rope Lines available in 20 and 30 metres.
- Light weight alloy Rope Grab.
- 140kg Shock Pack and two Karabiners.



### TWO (2) SIZES AVAILABLE

Components	Description	Material	Qty	Weight
ROPELN022	20m Rope Line	Alloy	20m	3.019
ROPELN030	30m Rope Line	Alloy	30m	4.600

## TEMPORARY HORIZONTAL SAFETYLINE

SAFETYLYNE\_LV201

- Temporary webbing lifeline, allowing to secure two (2) simultaneous users.
- Fall arrest work situations: Movement on lifeline, Restraint, Long horizontal movement on horizontal surface, Long horizontal movement on vertical structure, Short horizontal movement (less than 3m).
- Strap Width (mm): 50mm.
- Size 2.5m - 20m.



Components	Description	Material	Qty	Weight
SAFETYLYNE_LV201	Temporary Horizontal Lifeline	Polyester	1	0.062

- All products must be used within their intended design only.
- Failure to follow all warnings and instructions may result in a serious injury or death.
- Harnesses must be inspected as safe every time before and after each use.
- Six monthly logged safety inspections are to be completed by a competent person (refer to harness care/maintenance instructions).

Got questions? Contact SafetyLink for more information.

1300 789 545

**DELTA PLUS EXTENSION STRAP**

**DP\_LV102050**

- Extension strap in high tenacity polyester with D-ring.
- Color: Black - Orange
- Width: 45mm.



Components	Description	Material	Qty	Weight
DP_LV102050	Delta Plus Anchorage Device	Polyester	1.5m	0.327kg

**TRAUMA RELIEF STRAPS**

**DP\_HA203FS**

- Ultra-compact anti-compression strap kit in a reusable textile case to limit femoral compression in the event of a fall.
- Helps maintain normal blood circulation after a fall.
- Color: Black



Components	Description	Material	Qty	Weight
DP_HA203FS	Pair of femoral anti-compression straps	Polyamide	1	0.062kg

**ANCHOR SLING**

**ASTRAP003**

- 1.5 metre red 20mm Webbing Anchor Strap.
- Flat construction.
- Rated to 21kN.



Components	Description	Material	Qty	Weight
ASTRAP003	Anchor Strap	Nylon	1.5m	0.062kg

**KARABINER**

**KARBNR034**

- High strength aluminium Karabiner.
- Minimum breaking strength Rated 23kN.
- Gate opening 17mm.
- Double action, 16kN Rated gate strength.



Components	Description	Material	Qty	Weight
KARBNR034	Karabiner	Alu	1	0.163

## Staht T25 Digital Pull Tester Kit (Anchor Testing)

t25 KIT

Going digital will save time and provide traceability for you, your team, and your customers. The t25 Digital Pull Tester is perfect for accurately testing safety eye bolts, scaffold anchors and construction fixings up to 25kN (5620 lbf). It's easy to use, cost effective and with the free App, it's a no brainer!

The Staht t25 Digital Pull Tester kit provides all you need to carry out pull testing on anchors and eye safety bolts up to 25kN, helping you comply with worldwide industry standards and guidance such as: BS8539 & BS7883 NASC guidance TG4:19 AEFAC guidance TN05. Lightweight and easy to use, the kit is supplied in a heavy-duty case.

Components	Description	Weight
TESTER-STAHT-T25-600-044	Staht t25 Digital Pull Tester Kit, in Heavy Duty Case.	9.9



## Staht Line Tester Frame (no Load Cell)

KIT 1

The Staht LT is used for testing 8mm (7x7 or 1x19) cable terminations (swage) typically found on safety line systems to a maximum load of 25kN - (5,620 lbf). The manufacturer of the safety line systems will provide test guidance on the force that needs to be applied to the cable termination (swage).

Kit Contents: 300-001: Kit 1 - Line tester frame, M16 Sealed Thrust Nut, Anti - Rotation Spanner, 17mm Socket & Ratchet 3/8 Drive, Wrist Lanyard, Net bag, Heavy Duty Case.

**Load Cell not included Best for users who already own a Staht t25 tester.**

Kit	Description	Weight
TESTER-STAHT-LT-300-000	KIT 1: Staht Line Tester Frame (EXCLUDES t25 load cell) & Accessories in Case.	



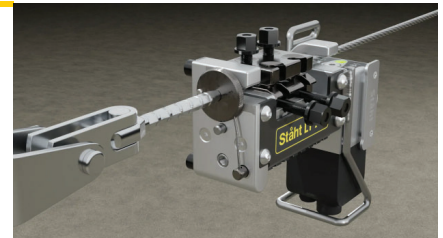
## Staht Line Tester Frame Kit (includes Load Cell)

KIT 2

The Staht LT is used for testing 8mm (7x7 or 1x19) cable terminations (swage) typically found on safety line systems to a maximum load of 25kN - (5,620 lbf). The manufacturer of the safety line systems will provide test guidance on the force that needs to be applied to the cable termination (swage).

Kit Contents: 300-006: Kit 2 - Line tester frame, t25 Load Cell, M16 Sealed Thrust Nut, Anti - Rotation Spanner, 17mm Socket & Ratchet 3/8 Drive, Wrist Lanyard, Net bag, Heavy Duty Case.

Kit	Description	Weight
TESTER-STAHT-LT-300-006	KIT 2: Staht Line Tester Frame (INCLUDES t25 load cell) & Accessories in Case.	6.3



## Staht LT (Anchor & Line Testing) Kit

KIT 3

The Staht LT (Line Tester) is used for testing 8mm (7x7 or 1x19) cable terminations (swage) typically found on safety line systems to a maximum load of 25kN - (5,620 lbf). The manufacturer of the safety line systems will provide test guidance on the force that needs to be applied to the cable termination (swage).

Kit Contents: Staht LT **Kit 1** (300-001) & 25kN Digital Tensile Tester Kit (**t25 KIT**), c/w Accessories & Heavy-Duty Case.

Kit	Description	Weight
TESTER-STAHT-LT-300-007	KIT 3: Staht Line Tester (KIT 1) & 25kN Digital Tensile Tester (TESTER-STAHT-T25-600-044)	16.2



Staht  
LT  
Kit 3

Got questions? Contact SafetyLink for more information.

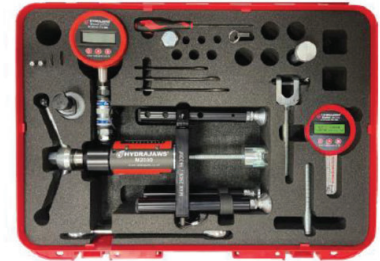
1300 789 545

## Hydrajaws Pull Tester - M2000 Scaffold Tie Tester Kit

TESTER-200

The Hydrajaws Scaffold Tie Tester Kit will test all types of anchors most commonly used for anchoring scaffold ties up to a maximum tensile load of 25kN. Adapters include a standard Bolt Test Adapter, M16 Threaded Stud Adapter and M12 Ringbolt Adapter Clevis which means a wide range of fixings can be tested.

- Detachable dual scale 25kN Analogue or Digital Gauge.
- Load spreading bridge with adjustable telescopic legs and swivel feet.
- Bolt tester Adapter with M12 locking Adapter.
- Turning Handle with 22mm integrated nut (for use in confined spaces).
- Calibration certificate (valid for 12 months).
- M12 Ringbolt Adapter Clevis. M16 Threaded Stud Adapters.
- M16 HT Hex set screw. M16 x120mm stud bolt.
- Robust carry case with full operating instructions.



Components	Description	Qty	Weight
TESTER-200-014	M2000 Scaffold Tie Tester Kit with 0-25kN Analogue Gauge	1	12
TESTER-200-014+ADP	M2000 Scaffold Tie Tester Kit with 0-25kN Analogue Gauge + DonutLink Adapter	1	12.6
TESTER-200-015	M2000 Scaffold Tie Tester Kit with 0-25kN Digital Gauge	1	12
TESTER-200-015+ADP	M2000 Scaffold Tie Tester Kit with 0-25kN Digital Gauge + DonutLink Adapter	1	12.6

## Hydrajaws Pull Tester - M2000 Scaffold Tie Tester Kit

TESTER-030-007

The upgraded Hydrajaws Safety Lifeline Cable Tester KIT 2 is a complete kit enabling engineers to validate the installation of anchors, eyebolts up to a maximum tensile load of 35kN and swaged components on newly installed or existing engineered lifeline systems to ensure compliance with BS 7883, up to a maximum tensile load of 20kN.

- Hydrajaws 80Nm Verify Torque. 24mm Ratchet spanner.
- Ratchet wrench with 17mm socket. 14mm spanner and Ball Drivers.
- 8mm Barrel clamp. 12mm Slotted adaptor.
- Extension Collar Insert and Extra Extension Rods.
- Knurled adaptor 8mm (10mm and 12mm optional).
- 6mm Hex key. Mini Clevis adaptor. Bolt Test adaptor.
- Slotted and Threaded adaptors. Tool Lanyards.



Components	Description	Qty	Weight
TESTER-030-007	M35+ Safety Lifeline Tester Kit with 0-25kN Digital Gauge	1	17

## Hydrajaws Bluetooth Digital System



The Dashboard contains all essential information including:

- All company devices and their calibration dates.
- All company users and licences.
- A GPS map containing all test sites.
- A list of Hydrajaws Approved International Service Centres.
- Download the app from the Google Play Store or the Apple App Store.

The Hydrajaws Bluetooth Digital system allows on-site pull tests to be automatically recorded and compiled into a digital report using the Hydrajaws Bluetooth Digital App on a mobile phone or tablet device. These reports can be sent directly to clients or managers and are stored in the cloud to be accessed remotely anywhere on a browser in a users own company dashboard. The comprehensive report will include all test information including a pass or fail result, a visual results graph, fixing details, site location co-ordinates, date and time. Notes, images and photos taken on-site can also be added. Using the Dashboard a company administrator can review all test reports from all company users. They can also add notes to reports and send them directly to customers.



**PRODUCT CODE: CON-CHEM-FISV.300**

Components	Description	Qty	
CON-CHEM-FISV.300.01	Injection Mortar FIS V Cartridge 300ml	1	
CON-CHEM-FISMR	Static Mixer FIS MR	2	

**FIS V 300T: INJECTION MORTAR**

APPLICATION	ANCHOR DIAMETER(mm)	DRILL HOLE DIAMETER(mm)	DRILL HOLE DEPTH(mm)	MORTAR/ FIXING(ml)	NO# OF FIXING/ CARTRIDGE
Concrete Insert	24	28	90	40	6
One Piece Eyebolt	16	18	90	15	18
WindowLink	53&25	55&28	20&122	60	4
SwiveLink	24	28	90	40	6
M10x130 Rod – Guardrail	10	12	95	8	35
M12x160 Rod – Tuff Post	12	14	115	10	28
M12x160 Rod – X-Rail	12	14	95	10	28
M16x130 Rod – DonutLink FrogLine	16	18	95	15	18
M16x160 Rod – Tuff Post	16	18	115	15	18
M16x200 Rod – Davit	16	18	140	16	15

**CURING TIME FIS V**

Cartridge Temperature (mortar)	Gelling Time	Temperature at anchoring base	Curing Time
		- 5°C - ± 0°C	24 hours
+ 0°C - + 5°C	13 minutes	± 0°C - + 5°C	3 hours
+ 5°C - + 10°C	9 minutes	+ 5°C - + 10°C	90 minutes
+ 10°C - + 20°C	5 minutes	+ 10°C - + 20°C	60 minutes
+ 20°C - + 30°C	4 minutes	+ 20°C - + 30°C	45 minutes
+ 30°C - + 40°C	2 minutes	+ 30°C - + 40°C	35 minutes

The above times apply from the moment of contact between resin and hardener in the static mixer. For installation, the cartridge temperature must be at least +5°C. For longer installation times, ie when interruptions occur in work, the mixer should be replaced.



Got questions? Contact SafetyLink for more information.

1300 789 545

## Steps to becoming a qualified SafetyLink product installer

### 1 Accreditation

Each user must have their Working at Heights accreditation (RIIWH5204D).

The requirements for installation of any fall protection equipment is to be a competent person. The definition of this is someone with suitable skills, knowledge, experience and training in the height safety industry. In order for you to work at heights you must complete a working at heights accreditation. Contact your local training centre.

### 2 Insurance

Each user/business entity must have correct insurance for installing height safety equipment.

Certification and annual recertification may have an effect on your Public and Products Liability Insurance. Engaging in these activities may also require you to take out or amend your existing Professional Indemnity Insurance. Because policies vary between insurers it is best you speak to your insurance advisor to ensure your coverage will include these activities.

### 3 Product Training

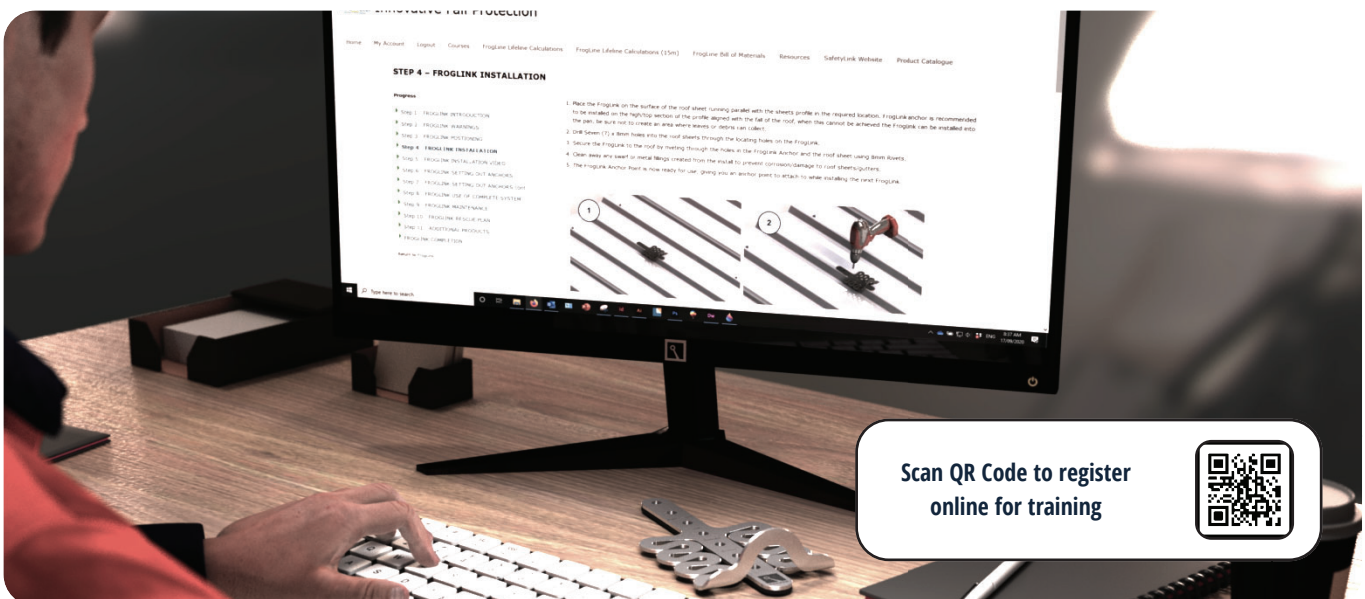
Each user must complete and pass each course for the product they are purchasing/installing.

SafetyLink's online training portal (Safety Centre) provides online courses on SafetyLink Anchors. Register yourself for free on SafetyLink's website [www.safetylink.com/safetycentre](http://www.safetylink.com/safetycentre). After completing and passing the product course you will receive a certificate to download and provide to your customer. Certificates are valid for 2 years. Personal training is required for installing lifelines, contact SafetyLink.

### 4 Certification

Issue a certificate for height safety system certification upon completion of the project.

On completion supply certification documents with site layout plan, training certificates, product checklist and manuals to the end user. You should also discuss the wording of any proposed certification with your relevant insurer and legal adviser to ensure you are covered in the event of a claim.



Scan QR Code to register  
online for training



## SafetyLink: BIM-Ready Fall Protection Solutions

As a global leader in fall protection, SafetyLink is proud to offer comprehensive BIM content, making it easier than ever for architects, designers, and engineers to specify and integrate our products into their projects. Our advanced safety systems—including energy-absorbing anchors and engineered lifeline solutions—are designed to exceed industry standards, delivering maximum protection and compliance across a wide range of applications.

### Virtual Showroom

Explore our Revit project file (.RVT), featuring preloaded families and types laid out for quick navigation. The file is preformatted for quality assurance, with optimized 2D/3D views and detailed family data to support efficient design and documentation workflows.

### Object Collections

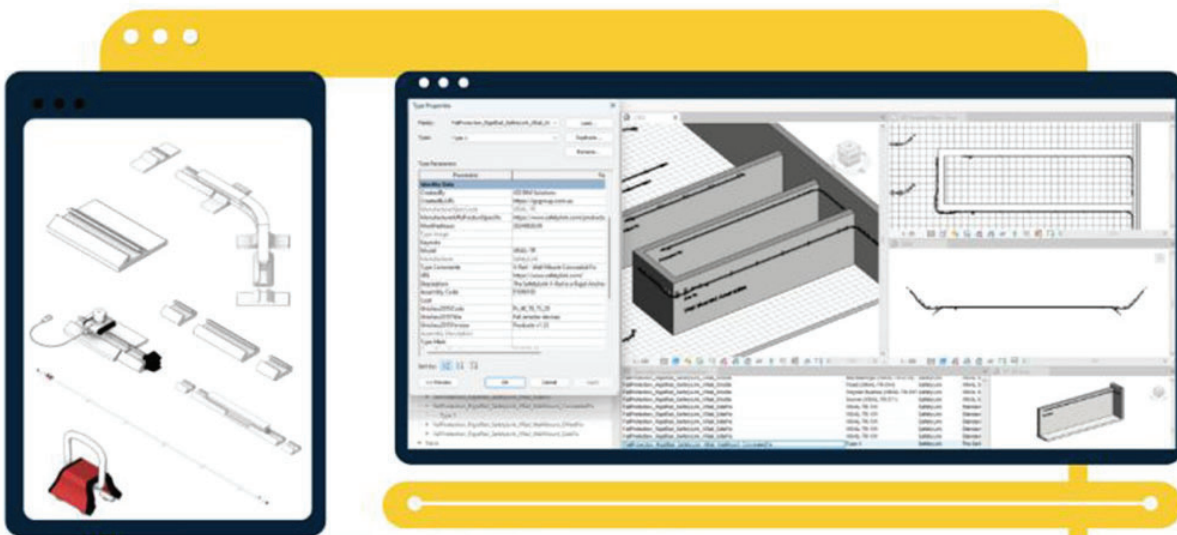
Download a collection zip file, containing a curated selection of BIM objects or high-quality product images—ideal for streamlined project planning, visualizations, and presentations.

<https://www.safetylink.com/bim-content/>



Scan Me

BIM CONTENT ONLINE

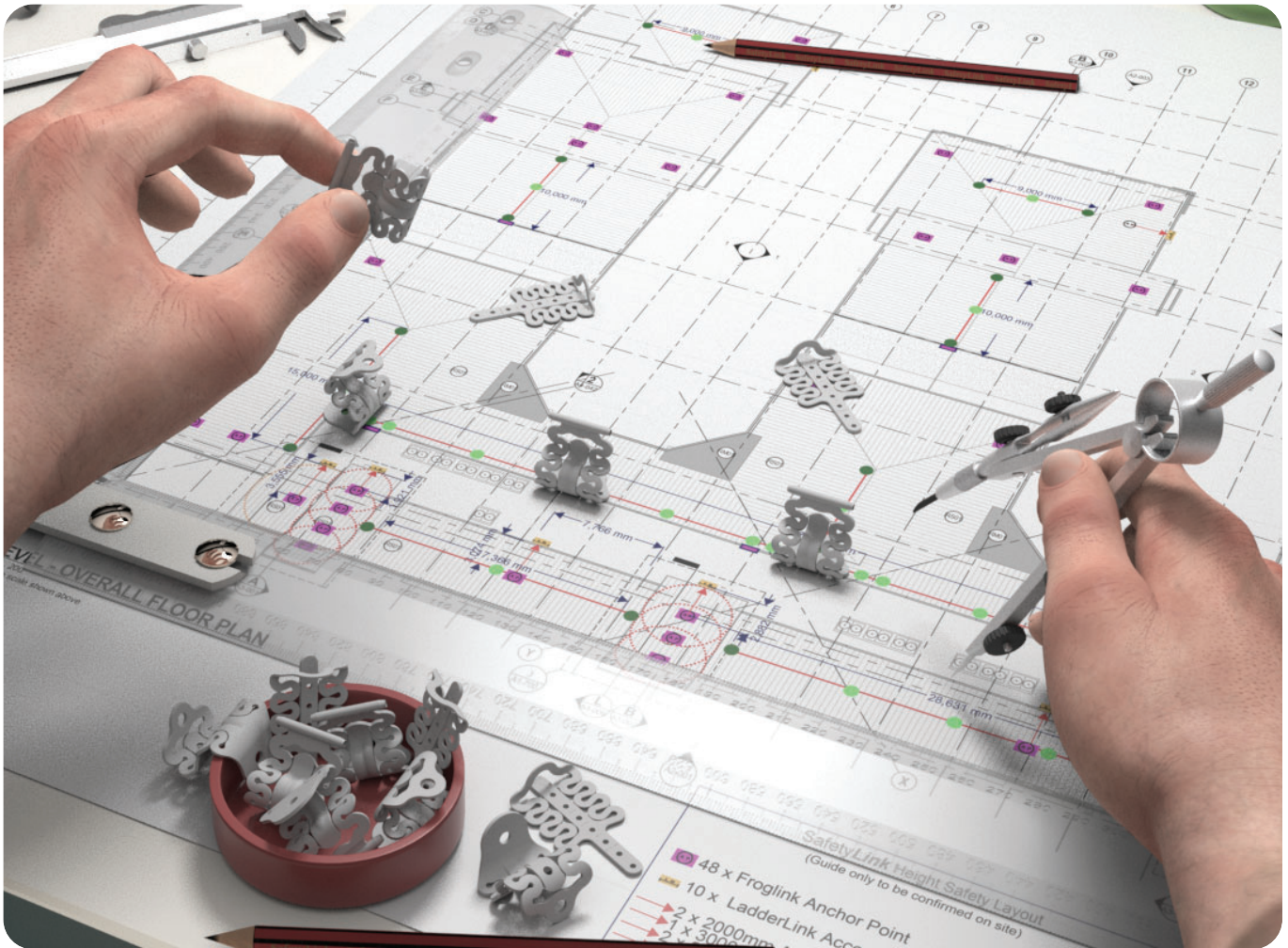


-  Native Revit Geometry
-  Virtual Showroom Available
-  Bulk Download Options

*enjoy safety.*

Got questions? Contact SafetyLink for more information.

1300 789 545



SafetyLink's design and planning team are here to help work out the positioning of your fall protection system, ensuring all areas of your roof are accessed safely.

- Things to consider when planning your roof layout:
- Are all areas of your roof protected, allowing complete access when working at heights?
- Are you protected from the ground up, allowing complete access to your roof?
- Detailed comprehensive documentation provided e.g. installation guides, testing results, product sheets should be provided.
- SafetyLink can also provide you with a qualified and reputable installer of SafetyLink products.

Contact our design team at [info@safetylink.com](mailto:info@safetylink.com) and we can plan your fall arrest system for you.



Expert Fall Protection Planning



Catalogue



SafetyLink Online Training



SafetyLink Website



Designing, manufacturing and  
distributing a full range of PPE.

[www.deltaplus.com.au](http://www.deltaplus.com.au)



**DELTAPLUS**

**© 2018, SafetyLink Pty Ltd,  
Australia.**  
**Patents : SafetyLink Pty Ltd has  
a multitude of patents, patents  
pending, design applications,  
trademarks and copyrighted  
documents both lodged and  
issued.**  
**Should you wish to know the  
progress of our intellectual  
property on a specific product  
please email us on  
info@safetylink.com  
and quote the product code.**



## **Asia-Pacific/The Americas**

info@safetylink.com

1300 789 545

## **Europe/Africa/Middle East**

export@safetylink.com

+61 (0)2 4964 1068

## **Northern Europe**

export@safetylink.com

+61 (0)2 4964 1068

**[www.safetylink.com](http://www.safetylink.com)**



FS 707792