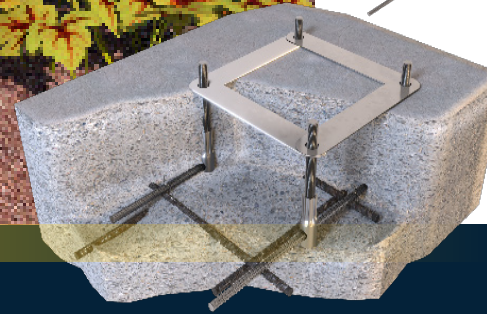


**Featured Tuff-Post - 900mm**

150mm  
Cast-In-Cage



300, 600 and  
900mm  
Cast-In-Cage



# SafetyLink Tuff Post with Cast-In Cage

Reach new heights with SafetyLink's Cast-In-Cages designed for the 150mm, 300mm, 600mm and 900mm Tuff-Post. SafetyLink's Cast-In Cages enable your height safety system to be installed from the start of construction.

Cast-In Cages are concrete studs set at the correct spacing for different products. The cages are to be installed prior to the concrete being poured. Save time and money by eliminating the need for pull testing during installation or re-certification.

The Tuff-Post raises the height of the system enabling the system to protrude above garden beds, parapet walls, solar panels, air conditioning systems and any other obstacles located on the roof. This enables the user or users to walk freely, reducing entanglement with obstacles.

- ▲ For use with SafetyLink 150mm, 300mm, 600mm and 900mm Tuff Posts.
- ▲ Cast-In-Cages are manufactured from 316 Stainless Steel.
- ▲ Energy absorbing.
- ▲ Tall enough to extend over garden beds, parapet walls, solar panels, air conditioning systems etc.



SafetyLink will provide you with the following:

- ▲ All products tested and manufactured to current Standards.
- ▲ All distributors and installers are trained to use SafetyLink products.
- ▲ Supply installation guides, testing results and product sheets.
- ▲ Layout Design Service providing compliant roof safety systems.
- ▲ Supply a large range of roof anchors that protect you from the ground up, allowing complete access to your roof.
- ▲ Installers are qualified to do yearly inspections on your anchors as per Standard.

**'Innovative  
Fall Protection'**

**SafetyLink Pty Ltd 1300 789 545**  
+61 2 4964 1068 info@safetylink.com



**SAFETYLINK**

A DELTA PLUS GROUP COMPANY

For further information please visit our website [www.SafetyLink.com](http://www.SafetyLink.com)