



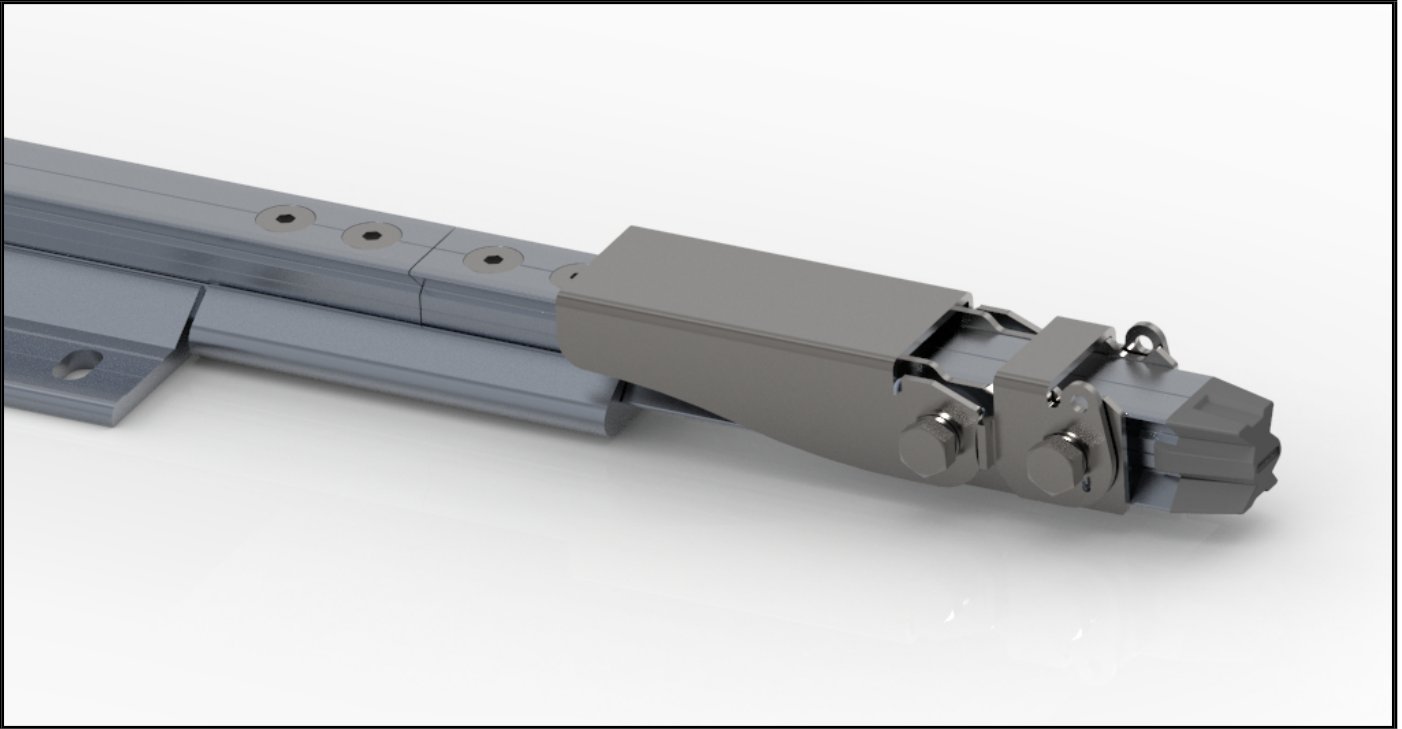
X-RAIL

SHUTTLE ENTRY/EXIT GATE

INSTALLATION AND USE



FIGURE 1



Contents

1	Warning	3
2	Specification	3
2.1	Description.....	3
2.2	Material Specification.....	3
2.3	Lock out	3
2.4	Components	4
3	Installation	4
3.1	System Design	4
3.1.1	General.....	4
3.2	Fasteners.....	4
3.3	Gate	5
4	Use	6
4.1	Opening the Gate.....	6
5	Storage, Transport and Maintenance	7
5.1	Storage and transport	7
5.2	Maintenance	7
5.3	Cleaning	7
6	Inspection	7
6.1	Before and After Use	7
6.2	Competent Person	7
6.3	Procedure.....	7
6.3.1	Locking Latch	7
6.3.2	Main Gate	7
6.3.3	Rail	7
6.3.4	Join	7
6.3.5	INSPECTION RECORD	8

1 Warning

- ⚠ Improper Use, Installation or Maintenance may result in serious injury or death.**
- ⚠ The structure or anchorage to which SafetyLink products are to be installed shall be assessed by a professional engineer to ensure it has adequate strength to support the product.**
- ⚠ SafetyLink products shall be installed, used and maintained in accordance with the applicable SafetyLink installation and use manual.**
- ⚠ SafetyLink's product shall be used in accordance with the current working at height standards, codes of practice, regulation or legislation in the region of use.**
- ⚠ During installation, use and maintenance, personnel shall not be exposed to a fall hazard.**
- ⚠ Installation is to be carried out by, or under the supervision of, a competent person.**
- ⚠ The installer shall complete the applicable SafetyLink online training modules before installing this product.**
- ⚠ Connection systems used with SafetyLink Anchor, Lifelines and Rigid Rail Systems shall contain a personal energy absorber.**
- ⚠ Do not carry out any modifications to this product without written permission from SafetyLink.**

2 Specification

2.1 Description

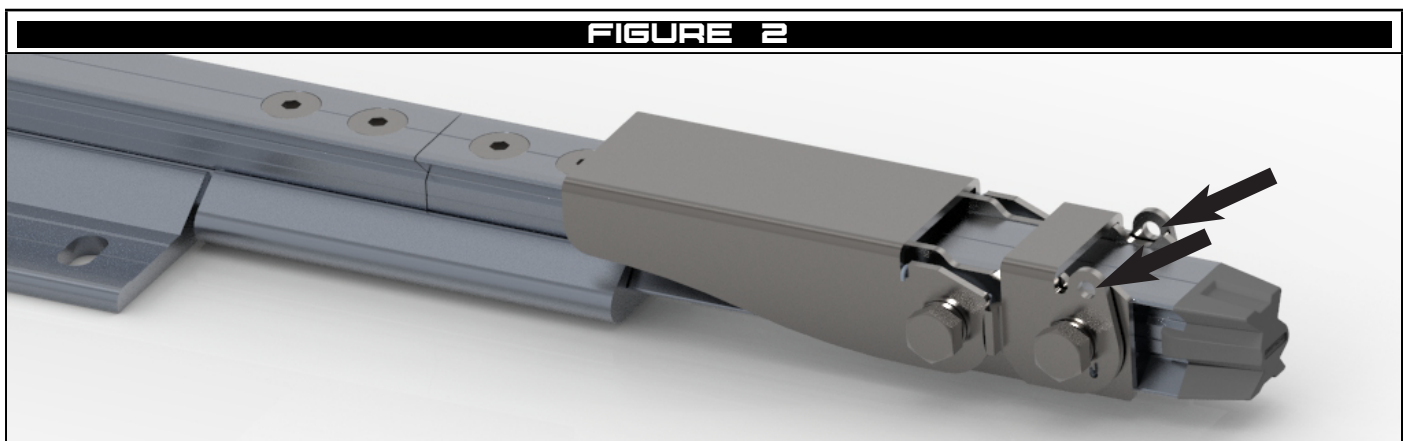
The SafetyLink Shuttle Entry/Exit Gate suitable for use as part X-Rail Rigid Anchor Line System. The Shuttle Entry/Exit Gate offers a location on the Rigid Anchor Line where shuttles can be loaded and removed from the system. The Shuttle Entry/Exit Gate can be installed in three orientations; overhead, wall and floor.

2.2 Material Specification

COMPONENT	DESCRIPTION
Rail	Aluminium 6000 series
Joins and Brackets.	Aluminium 6000 series
Fasteners	Stainless steel 316
End Cap	Nylon 66

2.3 Lock out

The Shuttle Entry/Exit Gate is equipped with a detail to allow a padlock to be installed to prevent unauthorised access to the system. The Padlock will need to have a bar diameter 6mm or less with a straight section of 50mm or greater.



2.4 Components

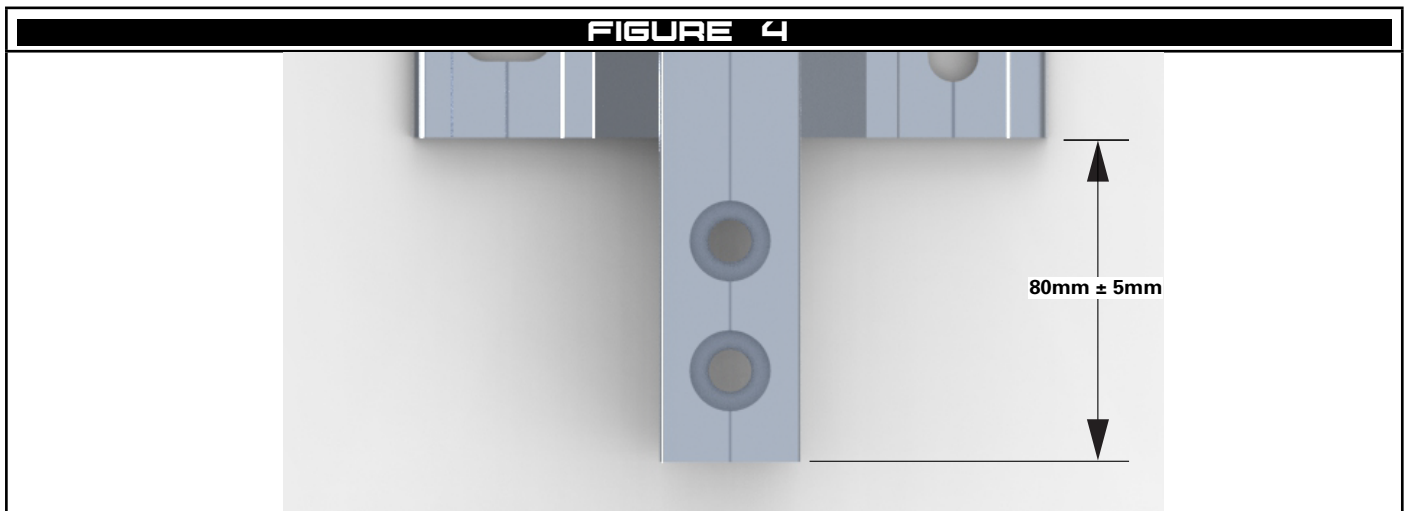
FIGURE 3		
		
SHUTTLE ENTRY/EXIT GATE	RAIL JOIN KIT	RAIL END CAP
XRAIL-TR-GATE	XRAIL-TR-002	XRAIL-TR-213

3 Installation

3.1 System Design

3.1.1 General

The X-Rail Shuttle Entry/Exit Gate shall be installed immediately after the system End Bracket See Figure 4. When installed, the Shuttle Entry/Exit Gate replaces the System Termination (XRAIL-TR-008) and Shuttle Stop (XRAIL-TR-006).



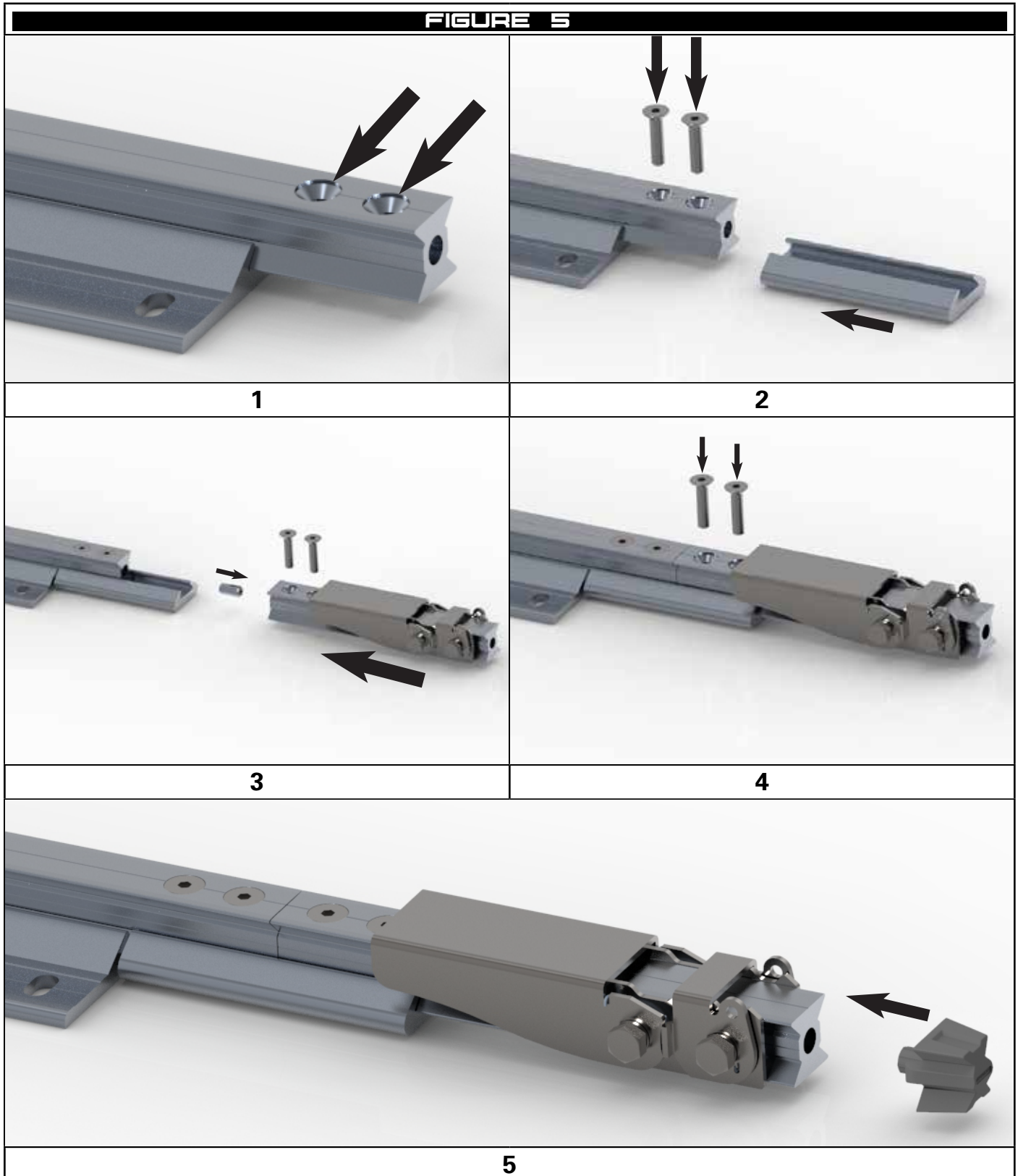
3.2 Fasteners

All X-Rail Fasteners are M10 socket head cap screws. All fasteners shall be tightened to 40Nm with a 6mm hex wrench.

⚠ All bolt threads must be applied with Loctite 243 thread-locker or equivalent prior to assembly. (IMPORTANT NOTE: Before applying Loctite 243 use Loctite 7471 primer or equivalent to activate the surface according to manufacturer's instructions).

3.3 Gate

- 1 Make 2 holes in the end of the rail with Onsite Drill Fixture (XRAIL-TR-402) and Drill Bit (XRAIL-TR-401)
- 2 Install the Rail Join with 2x fasteners
- 3 Slide the Rail Dowel in to the Shuttle Gate and insert the Gate in to the Join
- 4 Fasten the Gate with 2x fasteners
- 5 Install the End Cap



4 Use

⚠ Before activating either latch of the Shuttle Entry/Exit Gate ensure the user is not at risk of a fall by either attaching to another suitable anchor point or by eliminating the fall hazard by moving to a safety zone.

⚠ Opening the gate will allow Shuttles on the system to be come detached.

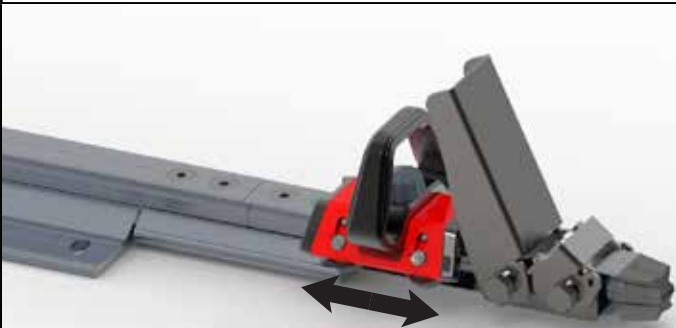
4.1 Opening the Gate

- 1 Lift the locking latch followed by the main gate
- 2 Either load or remove Shuttles from the rail
- 3 Release the latch and the main gate and the Entry/Exit Gate will close and lock automatically

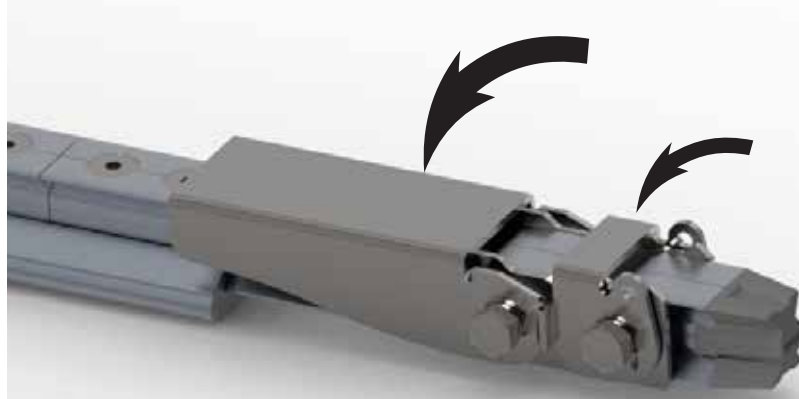
FIGURE 6



1



2



3

5 Storage, Transport and Maintenance

5.1 Storage and transport

This equipment shall be stored and transported in a cool, dry environment, away from any hazards and out of direct sunlight.

5.2 Maintenance

5.2.1 The X-Rail system is serviceable only by trained and authorised installers. Contact SafetyLink to find your nearest available installer. The service interval will be determined by the condition in which it is used. Harsher conditions will require more frequent servicing. The equipment may remain in service until it fails an inspection or is involved in a fall.

⚠ Do not attempt to modify or disassemble this product.

5.3 Cleaning

The X-Rail Shuttle Entry/Exit Gate may be cleaned by the end user periodically to increase service life. After cleaning, the product shall undergo the pre-use inspection.

Clean rail, joiners, brackets fixing and fasteners with a rag and warm water to remove dirt and grit. A mild detergent may be used to remove grease or oils from the product.

⚠ Do not store this product when wet. Allow the product to dry and conduct a pre-use inspection prior to return the item to service.

6 Inspection

6.1 Before and After Use

The X-Rail Shuttle Entry/Exit Gate shall be inspected before and after each use by the user.

6.2 Competent Person

A competent person shall inspect the product at least every 12 months.

6.3 Procedure

6.3.1 Locking Latch - Lift the latch and ensure it returns without intervention. Inspect the latch for deformation, damage, dents or debris that may affect the strength of the operation of the latch.

6.3.2 Main Gate - With the latch activated, lift the gate and ensure it returns without intervention. Inspect the gate for deformation, damage, dents or debris that may affect the strength or the operation of the gate. Without activating the latch lift try to lift the gate and ensure it does not open.

6.3.3 Rail - inspect for deformation, damage, dents or debris that may affect the strength of the rail or impede the Shuttle. Inspect all the fasteners are present and tight.

6.3.4 Join - inspect all fasteners are present and tight. Inspect fasteners are free of damage, debris, cracks, and corrosion.

6.3.5 INSPECTION RECORD

INSPECTION RECORD			
Product Code		Date of Manufacture	
Serial or Batch No.		Date of Install	
Inspector		Date of Inspection	
PROCEDURE	INSPECTION	USER	COMPETENT PERSON
6.3.1	Locking Latch - Lift the latch and ensure it returns without intervention. Inspect the latch for deformation, damage, dents or debris that may affect the strength of the operation of the latch.	<input type="checkbox"/>	<input type="checkbox"/>
	Comments:		
6.3.2	Main Gate - With the latch activated, lift the gate and ensure it returns without intervention. Inspect the gate for deformation, damage, dents or debris that may affect the strength of the operation of the gate. Without activating the latch lift try to lift the gate and ensure it does not open.	<input type="checkbox"/>	<input type="checkbox"/>
	Comments:		
6.3.3	Rail - inspect for deformation, damage, dents or debris that may affect the strength of the rail or impede the Shuttle. Inspect all the fasteners are present and tight.	<input type="checkbox"/>	<input type="checkbox"/>
	Comments:		
6.3.4	Join - inspect all fasteners are present and tight. Inspect fasteners are free of damage, debris, cracks, and corrosion.	<input type="checkbox"/>	<input type="checkbox"/>
	Comments:		

Warranties

EXTRACT: SAFETYLINK PTY LTD STANDARD TERMS AND CONDITIONS

- 1.1 To the extent permitted by law all implied conditions, warranties and undertakings are expressly excluded.
- 1.2 Except as provided in this clause the Company shall not be liable for any loss or damage, whether direct or indirect (including consequential losses or damage) arising out of any breach of contract by the Company or any negligence of the Company, its employees or agents.
- 1.3 Should the Company be liable for a breach of a guarantee, condition or warranty implied by the Australian Consumer Law (not being a guarantee, condition or warranty implied by sections 51, 52 and 53 of that Law) then its liability for a breach of any such condition or warranty express or implied shall be limited, at its option, to any one or more of the following.
- A in case of Goods
- I the replacement of the Goods or the supply of equivalent Goods.
 - II the repair of the goods,
 - III the payment of the cost of replacing the Goods or acquiring equivalent Goods.
 - IV the payment of the cost of having the Goods repaired. Provided that any such Goods are returned to the Company by the Purchaser at the Purchaser's expense.
- B in the case of services
- I the supply of the services again,
 - II the payment of the cost of having the services supplied again.
- 1.4 The Company is not liable for the costs of recovery of the Goods from the field, loss of use of the Goods, loss of time, inconvenience, incidental or consequential loss or damage, nor for any other loss or damage other than as stated above, whether ordinary or exemplary, caused either directly or indirectly by use of the Goods.
- 1.5 The Company warrants that at the time of shipment, Products manufactured by it will be free from defects in material and workmanship. In the absence of a modified written warranty, the Company agrees to making good any such defects by repairing the same or at the Company's option by replacement, for a period of (1) one year from the date of shipment. This limited warranty applies provided that:
- a defects have arising solely from faulty materials or workmanship;
 - b the Products have not received maltreatment, inattention or interference;
 - c the Products have been installed in accordance with the Company's Installation Handbooks using only products supplied by the Company;
 - d accessories used with the Products are manufactured by or approved by the Company
 - e the Products are maintained in accordance with Australian Standard 1891.4 (section 9).
 - f you notify any claim under this warranty to SafetyLink in writing to the address below no later than 14 days after the event or occurrence concerning the produce giving rise to the claim and you pay all costs related to your claim.
- This warranty does not apply to any defects or other malfunctions caused to the Goods by accident, neglect, vandalism, misuse, alteration, modification or unusual physical, environment or electrical stress.
- Please note that the benefits to the purchaser (as a consumer) given by this warranty are in addition to your other rights and remedies under the Australian Consumer Law. Our goods come with guarantees that cannot be excluded under the Australian Consumer Law. You are entitled to a replacement or refund for a major failure and compensation for any other reasonably foreseeable loss or damage. You are also entitled to have the goods repaired or replaced if the goods fail to be of acceptable quality and the failure does not amount to a major failure.
- 1.6 If any goods are not manufactured by the Company, the guarantee of the manufacturer thereof shall be accepted by the Purchaser as the only express warranty given in respect of the goods.
- 1.7 Except as provided in this clause 11, all express and implied warranties, guarantees and conditions under statute or general law as the merchantability, description, quality, suitability or fitness of the Products for any purpose or as to design, assembly, installation, materials or workmanship or otherwise are hereby expressly excluded (to the extent to which they may be excluded by law).

PLEASE SEE SAFETYLINK PTY LTD FULL STANDARD TERMS OF CONDITIONS OF SALE FOR FURTHER REFERENCE.



SafetyLink Pty Ltd | ABN 83 081 777 371 | www.safetylink.com

Head Office: 54 Bonville Ave, Thornton, 2322, NSW, Australia

+64 2 4964 1068 | 1300 789 545

Asia-Pacific/The Americas | info@safetylink.com

Europe/Africa/Middle East | europe.sales@safetylink.com

Northern Europe | uk.sales@safetylink.com