

The SafetyLink FastFit Braceless Davit is a temporary anchor suitable for use as part of a personal fall protection system. The FastFit Davit is suitable for having one user suspended from the shuttle and a second user connected to either of the secondary attachment points (Mast or Base). All attachment points are suitable for abseil or fall arrest.

⚠ Only one user shall be suspended from the Davit's shuttle or secondary attachment points at a time.



SCAN ME
Davit Manual



SCAN ME
Website



SCAN ME
Catalogue



SCAN ME
Safety Centre
Training

FALL PROTECTION RATING

The FastFit Davit is rated for one user with a maximum weight of 150kg suspended from the shuttle and one user connected to either of the secondary attachment points with a maximum weight of 150kg.

MATERIALS HANDLING

The davit may be used to lift materials. Davits used for material lifting purposes shall not be used for supporting a user. The following table provides the maximum loads allowable on the different davit booms.

⚠ Once a davit has been used for materials handling, it shall not be used as part of a fall protection system.

Figure 33

BOOM	DAVIT_BOOM22.BL	DAVIT_BOOM16.BL	DAVIT_BOOM10.BL
LOAD	300kg	450kg	500kg

STANDARDS

The FastFit Davit Temporary Anchor System is compliant with AS/NZS 5532.

All safety procedures must comply in accordance with the current safety code(s) of practice(s) for working at heights. Ensure safety at all times during and after installation by using an appropriate height safety system.

© 2018, SafetyLink Pty Ltd, Australia.

Patents: SafetyLink Pty Ltd has a multitude of patents, patents pending, design applications, trademarks and copyrighted documents both lodged and issued. Should you wish to know the progress of our intellectual property on a specific product please email us on ip@safetylink.com and quote the product code.

Doc ID: MKT-7926 Version: 6.0

BRACELESS DAVIT KITS (Base & Fixings Not Included)

Boom 1000mm



PRODUCT CODE: DAVIT_KIT.BL10.10

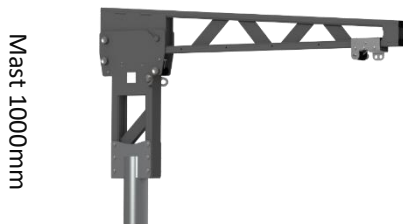
Braceless Mast: 1000mm
Braceless Boom: 1000mm

Rating: 15kN
Working Load Limit: 300kg
Operation Angle: 360 degrees

UNIT WEIGHT

Mast: 25.6kg
Boom: 13.5kg
TOTAL WEIGHT: 39.1kg

Boom 1600mm



PRODUCT CODE: DAVIT_KIT.BL10.16

Braceless Mast: 1000mm
Braceless Boom: 1600mm

Rating: 15kN
Working Load Limit: 400kg
Operation Angle: 360 degrees

UNIT WEIGHT

Mast: 25.6kg
Boom: 18kg
TOTAL WEIGHT: 43.6kg

Boom 2200mm



PRODUCT CODE: DAVIT_KIT.BL10.22

Braceless Mast: 1000mm
Braceless Boom: 2200mm

Rating: 15kN
Working Load Limit: 300kg
Operation Angle: 360 degrees

UNIT WEIGHT

Mast: 25.6kg
Boom: 21.8kg
TOTAL WEIGHT: 47.4kg



SCAN ME
Davit Manual



SCAN ME
Website



SCAN ME
Catalogue



SCAN ME
Safety Centre
Training

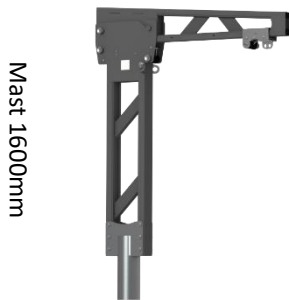
© 2018, SafetyLink Pty Ltd, Australia.

Patents: SafetyLink Pty Ltd has a multitude of patents, patents pending, design applications, trademarks and copyrighted documents both lodged and issued. Should you wish to know the progress of our intellectual property on a specific product please email us on ip@safetylink.com and quote the product code.

Doc ID: MKT-7926 Version: 6.0

BRACELESS DAVIT KITS (Base & Fixings Not Included)

Boom 1000mm



PRODUCT CODE: DAVIT_KIT.BL16.10

Braceless Mast: 1600mm
Braceless Boom: 1000mm

Rating: 15kN
Working Load Limit: 300kg
Operation Angle: 360 degrees

UNIT WEIGHT

Mast: 30.6kg
Boom: 13.5kg
TOTAL WEIGHT: 44.1kg

Boom 1600mm



PRODUCT CODE: DAVIT_KIT.BL16.16

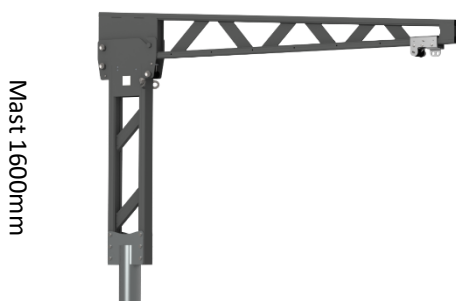
Braceless Mast: 1600mm
Braceless Boom: 1600mm

Rating: 15kN
Working Load Limit: 400kg
Operation Angle: 360 degrees

UNIT WEIGHT

Mast: 30.6kg
Boom: 18kg
TOTAL WEIGHT: 48.6kg

Boom 2200mm



PRODUCT CODE: DAVIT_KIT.BL16.22

Braceless Mast: 1600mm
Braceless Boom: 2200mm

Rating: 15kN
Working Load Limit: 300kg
Operation Angle: 360 degrees

UNIT WEIGHT

Mast: 30.6kg
Boom: 21.8kg
TOTAL WEIGHT: 52.4kg



SCAN ME

Davit Manual



SCAN ME

Website



SCAN ME

Catalogue



SCAN ME

Safety Centre
Training

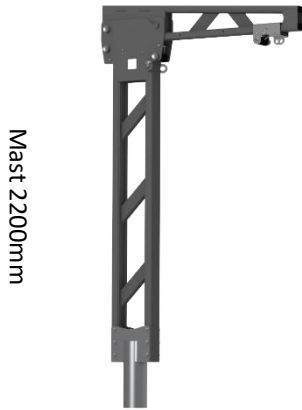
© 2018, SafetyLink Pty Ltd, Australia.

Patents: SafetyLink Pty Ltd has a multitude of patents, patents pending, design applications, trademarks and copyrighted documents both lodged and issued. Should you wish to know the progress of our intellectual property on a specific product please email us on ip@safetylink.com and quote the product code.

Doc ID: MKT-7926 Version: 6.0

BRACELESS DAVIT KITS (Base & Fixings Not Included)

Boom 1000mm



PRODUCT CODE: DAVIT_KIT.BL22.10

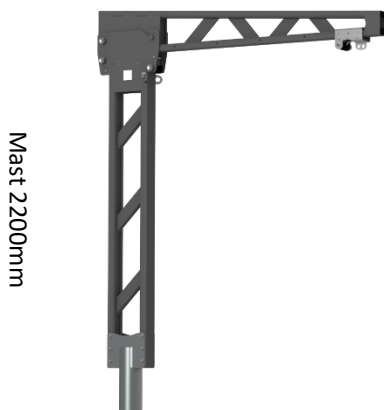
Braceless Mast: 2200mm
Braceless Boom: 1000mm

Rating: 15kN
Working Load Limit: 300kg
Operation Angle: 360 degrees

UNIT WEIGHT

Mast: 35.7kg
Boom: 13.5kg
TOTAL WEIGHT: 49.2kg

Boom 1600mm



PRODUCT CODE: DAVIT_KIT.BL22.16

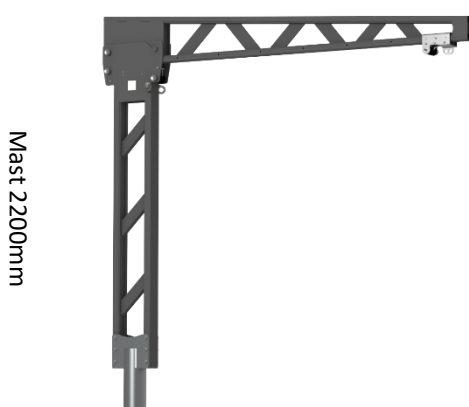
Braceless Mast: 2200mm
Braceless Boom: 1600mm

Rating: 15kN
Working Load Limit: 400kg
Operation Angle: 360 degrees

UNIT WEIGHT

Mast: 35.7kg
Boom: 18kg
TOTAL WEIGHT: 53.7kg

Boom 2200mm



PRODUCT CODE: DAVIT_KIT.BL22.22

Braceless Mast: 2200mm
Braceless Boom: 2200mm

Rating: 15kN
Working Load Limit: 300kg
Operation Angle: 360 degrees

UNIT WEIGHT

Mast: 35.7kg
Boom: 21.8kg
TOTAL WEIGHT: 57.5kg



SCAN ME

Davit Manual



SCAN ME

Website



SCAN ME

Catalogue



SCAN ME

Safety Centre
Training

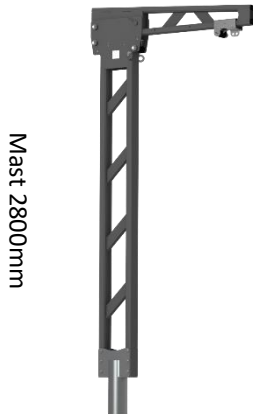
© 2018, SafetyLink Pty Ltd, Australia.

Patents: SafetyLink Pty Ltd has a multitude of patents, patents pending, design applications, trademarks and copyrighted documents both lodged and issued. Should you wish to know the progress of our intellectual property on a specific product please email us on ip@safetylink.com and quote the product code.

Doc ID: MKT-7926 Version: 6.0

BRACELESS DAVIT KITS (Base & Fixings Not Included)

Boom 1000mm



PRODUCT CODE: DAVIT_KIT.BL28.10

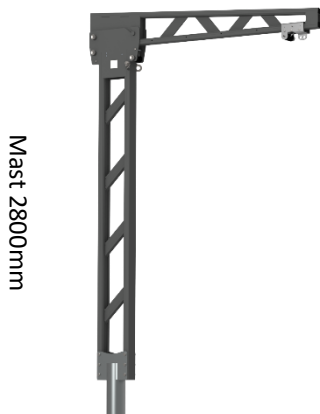
Braceless Mast: 2800mm
Braceless Boom: 1000mm

Rating: 15kN
Working Load Limit: 300kg
Operation Angle: 360 degrees

UNIT WEIGHT

Mast: 40.8kg
Boom: 13.5kg
TOTAL WEIGHT: 54.3kg

Boom 1600mm



PRODUCT CODE: DAVIT_KIT.BL28.16

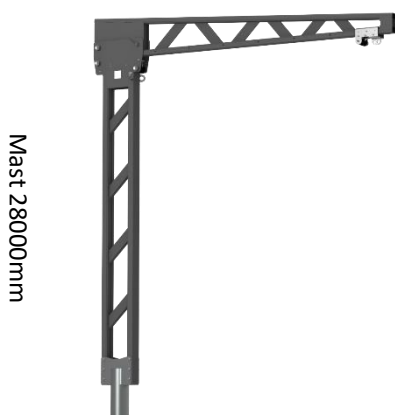
Braceless Mast: 2800mm
Braceless Boom: 1600mm

Rating: 15kN
Working Load Limit: 400kg
Operation Angle: 360 degrees

UNIT WEIGHT

Mast: 40.8kg
Boom: 18kg
TOTAL WEIGHT: 58.8kg

Boom 2200mm



PRODUCT CODE: DAVIT_KIT.BL28.22

Braceless Mast: 2800mm
Braceless Boom: 2200mm

Rating: 15kN
Working Load Limit: 300kg
Operation Angle: 360 degrees

UNIT WEIGHT

Mast: 40.8kg
Boom: 21.8kg
TOTAL WEIGHT: 62.6kg



Davit Manual



Website



Catalogue



Safety Centre
Training

© 2018, SafetyLink Pty Ltd, Australia.

Patents: SafetyLink Pty Ltd has a multitude of patents, patents pending, design applications, trademarks and copyrighted documents both lodged and issued. Should you wish to know the progress of our intellectual property on a specific product please email us on ip@safetylink.com and quote the product code.

Doc ID: MKT-7926 Version: 6.0



PRODUCT CODE: DAVIT_BOOM22.BL

- ▲ Material: Aluminium & Stainless Steel
- ▲ Boom Length: 2200mm
- ▲ Weight: 21.8kg



PRODUCT CODE: DAVIT_BOOM16.BL

- ▲ Material: Aluminium & Stainless Steel
- ▲ Boom Length: 1600mm
- ▲ Weight: 18kg



PRODUCT CODE: DAVIT_BOOM10.BL

- ▲ Material: Aluminium & Stainless Steel
- ▲ Boom Length: 1000mm
- ▲ Weight: 13.5kg



PRODUCT CODE: DAVIT_MAST28.BL

- ▲ Material: Aluminium & Stainless Steel
- ▲ Mast Height: 2800mm
- ▲ Weight: 40.8kg



PRODUCT CODE: DAVIT_MAST22.BL

- ▲ Material: Aluminium & Stainless Steel
- ▲ Mast Height: 2200mm
- ▲ Weight: 35.7kg



PRODUCT CODE: DAVIT_MAST16.BL

- ▲ Material: Aluminium & Stainless Steel
- ▲ Mast Height: 1600mm
- ▲ Weight: 30.6kg



PRODUCT CODE: DAVIT_MAST10.BL

- ▲ Material: Aluminium & Stainless Steel
- ▲ Mast Height: 1000mm
- ▲ Weight: 25.6kg



SCAN ME
Davit Manual



SCAN ME
Website



SCAN ME
Catalogue



SCAN ME
Safety Centre
Training

© 2018, SafetyLink Pty Ltd, Australia.

Patents: SafetyLink Pty Ltd has a multitude of patents, patents pending, design applications, trademarks and copyrighted documents both lodged and issued. Should you wish to know the progress of our intellectual property on a specific product please email us on ip@safetylink.com and quote the product code.

Doc ID: MKT-7926 Version: 6.0



PRODUCT CODE: DAVIT_BASE02

Davit Base – Concealed Fixed Floor Mount with Removable Sleeve Floor Mount

- ▲ Davit Base to be secured with Anchor Rods, Cast-In Cage or Steel Fixings.
- ▲ Material: Galvanised Steel
- ▲ Weight: 32kg



PRODUCT CODE: DAVIT_BASE02.01

Davit Base – Concealed Fixed Floor Mount

- ▲ Davit Base to be secured with Anchor Rods, Cast-In Cage or Steel Fixings.
- ▲ One (1) base required for each abseil location.
- ▲ Material: Galvanised Steel
- ▲ Weight: 15.7kg



PRODUCT CODE: DAVIT_BASE02.02

Davit Base - Removable Sleeve Floor Mount

- ▲ One (1) base required for each davit arm.
- ▲ Material: Galvanised Steel
- ▲ Weight: 16.3kg



SCAN ME

Davit Manual



SCAN ME

Website



SCAN ME

Catalogue



SCAN ME

Safety Centre
Training



PRODUCT CODE: DAVIT_BASE02.04

Davit Base – Concealed Fixed Floor Mount

- ▲ Davit Base to be secured with Anchor Rods, Cast-In Cage or Steel Fixings.
- ▲ Flat based design may assist with waterproofing.
- ▲ One (1) base required for each abseil location.
- ▲ Material: Galvanised Steel
- ▲ Weight: 18.5kg



PRODUCT CODE: DAVIT_BASE02.WP

Davit Base – Concealed Fixed Floor Mount

- ▲ Davit Base to be secured with Anchor Rods, Cast-In Cage or Steel Fixings.
- ▲ Flat based design may assist with waterproofing.
- ▲ One (1) base required for each abseil location.
- ▲ Material: Galvanised Steel
- ▲ Weight: 35.19kg

© 2018, SafetyLink Pty Ltd, Australia.

Patents: SafetyLink Pty Ltd has a multitude of patents, patents pending, design applications, trademarks and copyrighted documents both lodged and issued. Should you wish to know the progress of our intellectual property on a specific product please email us on ip@safetylink.com and quote the product code.

Doc ID: MKT-7926 Version: 6.0



PRODUCT CODE: DAVIT_BASE01

Davit Base – Fixed Floor Mount

- ▲ Davit Base to be secured with Anchor Rods, Cast-In Cage or Steel Fixings.
- ▲ Material: Galvanised Steel
- ▲ Weight: 24.5kg



PRODUCT CODE: DAVIT_BASE01.WP

Davit Base – Fixed Floor Mount

- ▲ Davit Base to be secured with Anchor Rods, Cast-In Cage or Steel Fixings.
- ▲ Design may assist with waterproofing
- ▲ Material: Galvanised Steel
- ▲ Weight: 24.5kg



SCAN ME
Davit Manual



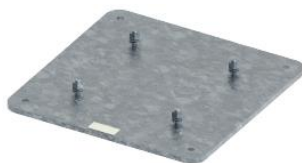
SCAN ME
Website



SCAN ME
Catalogue



SCAN ME
Safety Centre
Training



PRODUCT CODE: DAVIT_BASE09

Davit Base – Concealed Fixed Floor Mount

- ▲ Davit Base to be secured with Anchor Rods, Cast-In Cage or Steel Fixings.
- ▲ Davit Floor Mount Base *ADAPTOR* for 25MPa concrete
- ▲ One (1) base required for each abseil location.
- ▲ Material: Galvanised Steel
- ▲ Weight: 44.21kg

© 2018, SafetyLink Pty Ltd, Australia.

Patents: SafetyLink Pty Ltd has a multitude of patents, patents pending, design applications, trademarks and copyrighted documents both lodged and issued. Should you wish to know the progress of our intellectual property on a specific product please email us on ip@safetylink.com and quote the product code.

Doc ID: MKT-7926 Version: 6.0

Stainless Steel Davit Bases for Planter Installation



PRODUCT CODE: DAVIT_BASE07.400

Davit Base – Raised Fixed Floor Mount – 400mm

- ▲ Davit Base to be secured with Anchor Rods, Cast-In Cage or Steel Fixings.
- ▲ Material: Stainless Steel
- ▲ Weight: 41.2kg



PRODUCT CODE: DAVIT_BASE07.600

Davit Base – Raised Fixed Floor Mount – 600mm

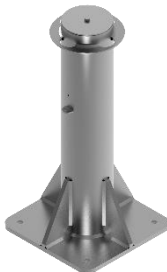
- ▲ Davit Base to be secured with Anchor Rods, Cast-In Cage or Steel Fixings.
- ▲ Material: Stainless Steel
- ▲ Weight: 46.7kg



SCAN ME
Davit Manual



SCAN ME
Website



PRODUCT CODE: DAVIT_BASE07.800

Davit Base – Raised Fixed Floor Mount – 800mm

- ▲ Davit Base to be secured with Anchor Rods, Cast-In Cage or Steel Fixings.
- ▲ Material: Stainless Steel
- ▲ Weight: 52.3kg



SCAN ME
Catalogue



PRODUCT CODE: DAVIT_BASE07.1000

Davit Base – Raised Fixed Floor Mount – 1000mm

- ▲ Davit Base to be secured with Anchor Rods, Cast-In Cage or Steel Fixings.
- ▲ Material: Stainless Steel
- ▲ Weight: 57.8kg



SCAN ME
Safety Centre
Training

© 2018, SafetyLink Pty Ltd, Australia.

Patents: SafetyLink Pty Ltd has a multitude of patents, patents pending, design applications, trademarks and copyrighted documents both lodged and issued. Should you wish to know the progress of our intellectual property on a specific product please email us on ip@safetylink.com and quote the product code.

Doc ID: MKT-7926 Version: 6.0



PRODUCT CODE: DAVIT_BASE08.400

Davit Base – Raised Fixed Floor Mount – 400mm

- ▲ Davit Base to be secured with Anchor Rods, Cast-In Cage or Steel Fixings.
- ▲ Material: Galvanised Steel
- ▲ Weight: 36.72kg



PRODUCT CODE: DAVIT_BASE08.600

Davit Base – Raised Fixed Floor Mount – 600mm

- ▲ Davit Base to be secured with Anchor Rods, Cast-In Cage or Steel Fixings.
- ▲ Material: Galvanised Steel
- ▲ Weight: 42.35kg



SCAN ME
Davit Manual



SCAN ME
Website



SCAN ME
Catalogue



SCAN ME
Safety Centre
Training



PRODUCT CODE: DAVIT_BASE08.800

Davit Base – Raised Fixed Floor Mount – 800mm

- ▲ Davit Base to be secured with Anchor Rods, Cast-In Cage or Steel Fixings.
- ▲ Material: Galvanised Steel
- ▲ Weight: 47.94kg



PRODUCT CODE: DAVIT_BASE08.1000

Davit Base – Raised Fixed Floor Mount – 1000mm

- ▲ Davit Base to be secured with Anchor Rods, Cast-In Cage or Steel Fixings.
- ▲ Material: Galvanised Steel
- ▲ Weight: 53.60kg

© 2018, SafetyLink Pty Ltd, Australia.

Patents: SafetyLink Pty Ltd has a multitude of patents, patents pending, design applications, trademarks and copyrighted documents both lodged and issued. Should you wish to know the progress of our intellectual property on a specific product please email us on ip@safetylink.com and quote the product code.

Doc ID: MKT-7926 Version: 6.0



PRODUCT CODE: DAVIT_BASE04

Davit Base - Fixed Wall Mount

- ▲ Davit Base to be secured with Anchor Rods, Cast-In Cage or Steel Fixings.
- ▲ Standard Concrete Install: suitable for DAVIT_BOOM10 and DAVIT_BOOM16.
- ▲ Standard Steel Install: suitable for DAVIT_BOOM10, DAVIT_BOOM16 and DAVIT_BOOM22.
- ▲ Material: Galvanised Steel
- ▲ Weight: 34.74kg



PRODUCT CODE: DAVIT_BASE04.01

Davit Base - Concealed Fixed Wall Mount

- ▲ Davit Base to be secured to wall with Anchor Rods, Cast-In Cage or Steel Fixings, use with removable sleeve - DAVIT_BASE04.02.
- ▲ One (1) base required for each abseil location.
- ▲ Standard Concrete Install: suitable for DAVIT_BOOM10 and DAVIT_BOOM16.
- ▲ Standard Steel Install: suitable for DAVIT_BOOM10, DAVIT_BOOM16 and DAVIT_BOOM22. Material: Galvanised Steel
- ▲ Weight: 13.7kg



PRODUCT CODE: DAVIT_BASE04.02

Davit Base - Removable Sleeve Wall Mounted

- ▲ Use with fixed base - DAVIT_BASE04.01.
- ▲ One (1) base required for each davit arm.
- ▲ Standard Concrete Install: suitable for DAVIT_BOOM10 and DAVIT_BOOM16.
- ▲ Standard Steel Install: suitable for DAVIT_BOOM10, DAVIT_BOOM16 and DAVIT_BOOM22.
- ▲ Material: Galvanised Steel
- ▲ Weight: 21.04kg



PRODUCT CODE: DAVIT_BASE10

Davit Base - Fixed Wall Mounted

- ▲ One (1) base required for each davit arm.
- ▲ Standard Concrete Install: suitable for DAVIT_BOOM10 and DAVIT_BOOM16.
- ▲ Standard Steel Install: suitable for DAVIT_BOOM10, DAVIT_BOOM16 and DAVIT_BOOM22.
- ▲ Material: Galvanised Steel
- ▲ Weight: 30.53kg



PRODUCT CODE: DAVIT_BASE.SLEEVE

- ▲ Davit Sleeve, used inside davit bases.
- ▲ Material: PVC
- ▲ Weight: 0.5kg



SCAN ME
Davit Manual



SCAN ME
Website



SCAN ME
Catalogue

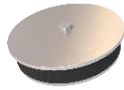


SCAN ME
Safety Centre
Training

© 2018, SafetyLink Pty Ltd, Australia.

Patents: SafetyLink Pty Ltd has a multitude of patents, patents pending, design applications, trademarks and copyrighted documents both lodged and issued. Should you wish to know the progress of our intellectual property on a specific product please email us on ip@safetylink.com and quote the product code.

Doc ID: MKT-7926 Version: 6.0



PRODUCT CODE: DAVIT_BASE.CAP

- ▲ Davit Caps used to cap off base when not in use.
- ▲ Material: Stainless steel, EPDM
- ▲ Weight: 1.66kg



PRODUCT CODE: DAVIT_BASE07.PROOF

- ▲ Planter Base Proof Loading Kit
- ▲ Material: PVC
- ▲ Weight: 2.35kg



PRODUCT CODE: DAVIT_BASE07.TOOL

- ▲ Planter Base Proof Loading Tool
- ▲ Material: Steel
- ▲ Weight: 1.76kg



PRODUCT CODE: DAVIT_BASE05

- ▲ Concrete Cast-In Cage for installation prior to pouring concrete.
- ▲ Material: Mild Steel
- ▲ Weight: 2.14kg



PRODUCT CODE: DAVIT_BASE05-SS

- ▲ Concrete Cast-In Cage for installation prior to pouring concrete.
- ▲ Material: Stainless Steel
- ▲ Weight: 4.07kg



PRODUCT CODE: CONCL014

- ▲ Retro Concrete Fixing
- ▲ Material: Galvanised Steel
- ▲ Weight: 1.94kg



PRODUCT CODE: CON-M16X200-DONUT

- ▲ Retro Concrete Fixing
- ▲ Material: Stainless Steel, Nylon
- ▲ Weight: 0.32kg



PRODUCT CODE: CONCL013

- ▲ Retro Concrete Fixing with Brass Cap
- ▲ Material: Stainless Steel
- ▲ Weight: 0.57kg



SCAN ME

Davit Manual



SCAN ME

Website



SCAN ME

Catalogue



SCAN ME

Safety Centre
Training

© 2018, SafetyLink Pty Ltd, Australia.

Patents: SafetyLink Pty Ltd has a multitude of patents, patents pending, design applications, trademarks and copyrighted documents both lodged and issued. Should you wish to know the progress of our intellectual property on a specific product please email us on ip@safetylink.com and quote the product code.

Doc ID: MKT-7926 Version: 6.0