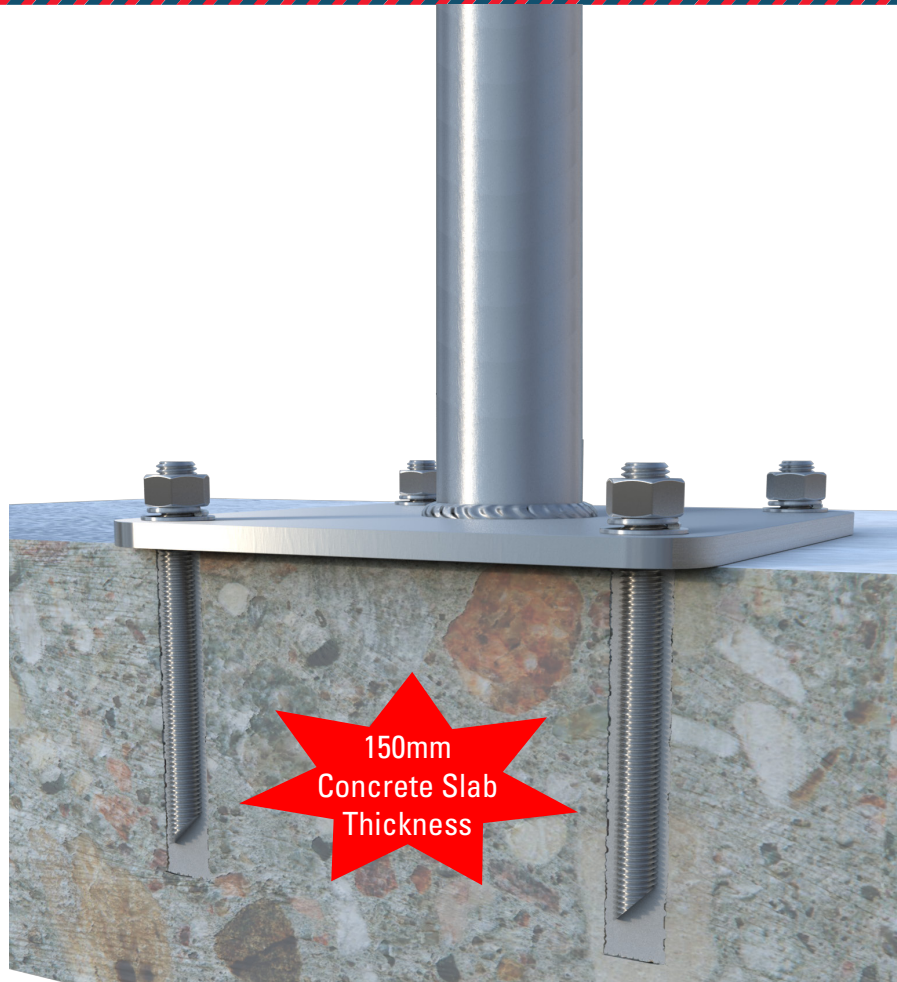
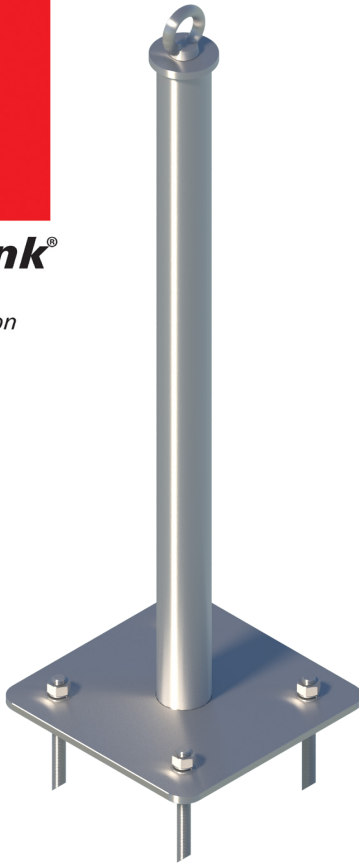




SafetyLink®
Innovative
Fall Protection



TUFF-POST 900

Concrete Mounted with Collared Eyebolt

Product Code: TUFF-POST900R-C-COL

Designed to be submerged into garden beds, water and other mediums.

Reach new heights with SafetyLink's 900mm **TUFF-POST**. Similar in design to our 150, 300 and 600mm **TUFF-POSTS** our new 900mm post is a sealed unit made entirely from 316 stainless steel. SafetyLink's **TUFF-POST** range can be submerged into garden beds, water environments and a multitude of other mediums.

The **TUFF-POST** is used in conjunction with a SafetyLink lifeline or eyebolt system. The system can also be mounted into overhead steelwork and has the capabilities of lowering through false ceilings.

The 900mm **TUFF-POST** raises the height of the system enabling the system to protrude above garden beds, parapet walls, solar panels, air conditioning systems and any other obstacles located on the roof. This enables the user or users to walk freely, reducing entanglement with obstacles.

The **TUFF-POST** can be installed into steel or concrete structures. All our **TUFF-POST** are designed to install onto minimum 150mm concrete slab thickness, which cater to local and global building designs/structures.

- Can be installed into minimum concrete slab thickness 150mm.
- Easy waterproofing with no base reinforcing obstructions.
- Made from 316 stainless steel.
- Energy absorbing.
- Weights 10kg.

SafetyLink will provide you with the following:

- All products tested and manufactured to Australian and New Zealand Standards.
- All distributors and installers are trained to use SafetyLink products.
- Supply installation guides, testing results and product sheets.
- Layout Design Service providing compliant roof safety systems.
- Supply a large range of roof anchors that protect you from the ground up, allowing complete access to your roof.
- Installers are qualified to do yearly inspections on your anchors as per Australian and New Zealand Standards.



SafetyLink®
Innovative
Fall Protection

SafetyLink Pty Ltd 1300 789 545

+61 2 4964 1068 info@safetylink.com



FS 707792

For further information and to order our products visit our website.

www.safetylink.com