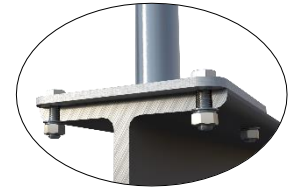


TUFF-POST

FrogLine 900mm (Round) TUFF-POST Steel Mounted

- TUFF-POST is designed to raise the height of a Frogline Lifeline system 900mm.
- Designed to be submerged into garden beds, water and other mediums.
- Designed to be **bolted to steel** (concrete anchored version available).



The building or structure for the anchorages must be assessed by an engineer, unless it is clear to a competent height safety installer that the structure is adequate. Refer to system information for site specific use.

PRODUCT COMPONENTS	DESCRIPTION	MATERIAL	QTY	ANCHOR
TUFF POST END ANCHOR – PRODUCT CODE: STAT.FROGTUFF002S–900R				
FROGLINE END	FrogLine Base End	316SS	1	
BOLT-M16x50mm-SS	Bolt: M16 x 50mm	316SS	1	
WASHER M16	Washer: M16	316SS	1	
WASHER M16_SPRING	Spring Washer: M16	316SS	1	
TUFF-POST900R	TUFF-POST 900mm (Round)	316SS	1	
BOLT-M16x50mm-SS	Bolt: M16x50mm Set Screw (Length TBC)	316SS	4	
WASHER M16	Washer: M16	316SS	4	
WASHER M16_SPRING	Spring Washer: M16	316SS	4	
NUT M16	Nut: M16	316SS	4	
TUFF POST INTERMEDIATE ANCHOR – PRODUCT CODE: STAT.FROGTUFF001S–900R				
FROGLINE INT	FrogLine Base Intermediate	316SS	1	
BOLT-M16x50mm-SS	Bolt: M16 x 50mm	316SS	1	
WASHER M16	Washer: M16	316SS	1	
WASHER M16_SPRING	Spring Washer: M16	316SS	1	
TUFF-POST900R	TUFF-POST 900mm (Round)	316SS	1	
BOLT-M16x50mm-SS	Bolt: M16x50mm Set Screw (Length TBC)	316SS	4	
WASHER M16	Washer: M16	316SS	4	
WASHER M16_SPRING	Spring Washer: M16	316SS	4	
NUT M16	Nut: M16	316SS	4	
TUFF POST INTERMEDIATE EXT ANCHOR – PRODUCT CODE: STAT.FROGTUFF008S–900R				
FROGLINE INT_EXT	FrogLine Base Intermediate Extended	316SS	1	
BOLT-M16x50mm-SS	Bolt: M16 x 50mm	316SS	1	
WASHER M16	Washer: M16	316SS	1	
WASHER M16_SPRING	Spring Washer: M16	316SS	1	
TUFF-POST900R	TUFF-POST 900mm (Round)	316SS	1	
BOLT-M16x50mm-SS	Bolt: M16x50mm Set Screw (Length TBC)	316SS	4	
WASHER M16	Washer: M16	316SS	4	
WASHER M16_SPRING	Spring Washer: M16	316SS	4	
NUT M16	Nut: M16	316SS	4	
TUFF POST CORNER ANCHOR – PRODUCT CODE: STAT.FROGTUFF003S–900R				
FROGLINE CNR	FrogLine Base Corner	316SS	1	
BOLT-M16x50mm-SS	Bolt: M16 x 50mm	316SS	1	
WASHER M16	Washer: M16	316SS	1	
WASHER M16_SPRING	Spring Washer: M16	316SS	1	
TUFF-POST900R	TUFF-POST 900mm (Round)	316SS	1	
BOLT-M16x50mm-SS	Bolt: M16x50mm Set Screw (Length TBC)	316SS	4	
WASHER M16	Washer: M16	316SS	4	
WASHER M16_SPRING	Spring Washer: M16	316SS	4	
NUT M16	Nut: M16	316SS	4	

All products must be installed in accordance with SafetyLink's installation handbook, using only products supplied by SafetyLink Pty Ltd.



© 2018, SafetyLink Pty Ltd, Australia.

Patents: SafetyLink Pty Ltd has a multitude of patents, patents pending, design applications, trademarks and copyrighted documents both lodged and issued. Should you wish to know the progress of our intellectual property on a specific product please email us on ip@safetylink.com and quote the product code.

Doc ID: MKT-878 Version: 3.0

Asia-Pacific/The Americas
+61 249641068
info@safetylink.com

Europe/Africa/Middle East
+33 619493867
europe.sales@safetylink.com

Northern Europe
+44 7599508290
uk.sales@safetylink.com



SCAN ME
FrogLine
In Use



SCAN ME
Terms and
Conditions



SCAN ME
Catalogue



SCAN ME
Installation
Handbook



SCAN ME
Safety Centre
Training

DATA SHEET



FS 707792