

# TUFF-POST

## Concrete Mounted TUFF-POST (Round) with Collared Eyebolt



SCAN ME

Chemical Adhesive  
Data Sheet



SCAN ME

Catalogue



SCAN ME

Safety Centre  
Training



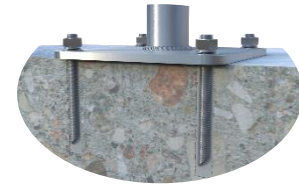
SCAN ME

Installation  
Handbook

DATA SHEET



FS 707792

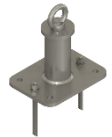


- TUFF-POST is designed to raise a height safety system by 150mm, 300mm, 600mm or 900mm.
- TUFF-POST is a sealed unit made entirely from stainless steel, designed to be submerged into garden beds, water and other mediums. Designed to be **anchored into concrete**.
- Anchors used for **Fall Arrest - 150, 300, 600, 900mm. Rope Access/Abseiling - 150, 300 & 600mm.**

The building or structure for the anchorages must be assessed by an engineer, unless it is clear to a competent height safety installer that the structure is adequate. Refer to system information for site specific use.

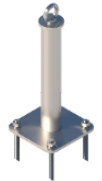
### COMPLETE UNIT - PRODUCT CODE: TUFF-POST150R-C-COL

Product Parts	Description	Qty	Material
EYEBOLT M16x26mm	Collared Eyebolt: M16x26mm	1	316SS
WASHER M16_SPRING	Spring Washer: M16	1	316SS
TUFF-POST150R	TUFF-POST 150mm (Round)	1	316SS
CON-M12x160	Anchor Rod M12x160, Spring Washer, Nut & Washer	2	316SS



### COMPLETE UNIT - PRODUCT CODE: TUFF-POST300R-C-COL

Product Parts	Description	Qty	Material
EYEBOLT M16x26mm	Collared Eyebolt: M16x26mm	1	316SS
WASHER M16_SPRING	Spring Washer: M16	1	316SS
TUFF-POST300R	TUFF-POST 300mm (Round)	1	316SS
CON-M16x160	Anchor Rod M16x160, Spring Washer, Nut & Washer	4	316SS



### COMPLETE UNIT - PRODUCT CODE: TUFF-POST600R-C-COL

Product Parts	Description	Qty	Material
EYEBOLT M16x26mm	Collared Eyebolt: M16x26mm	1	316SS
WASHER M16_SPRING	Spring Washer: M16	1	316SS
TUFF-POST600R	TUFF-POST 600mm (Round)	1	316SS
CON-M16x160	Anchor Rod M16x160, Spring Washer, Nut & Washer	4	316SS



### COMPLETE UNIT - PRODUCT CODE: TUFF-POST900R-C-COL (FALL ARREST ONLY)

Product Parts	Description	Qty	Material
EYEBOLT M16x26mm	Collared Eyebolt: M16x26mm	1	316SS
WASHER M16_SPRING	Spring Washer: M16	1	316SS
TUFF-POST900R	TUFF-POST 900mm (Round)	1	316SS
CON-M16x160	Anchor Rod M16x160, Spring Washer, Nut & Washer	4	316SS



#### Rated 15kN one person anchor

1. To comply with Australian/European Standards each TUFF-POST unit must be tested after installation.
2. Test consists of ultimate pull out force proof loading to 50% (7.5kN) of design purpose (15kN) of anchorage.
3. Allow sufficient time for curing before testing, see instructions on fastener container.
4. Recommended chemical anchor: Fischer FIS-V as per Fischer Product Supplement Data sheets.

All products must be installed in accordance with SafetyLink's installation handbook, using only products supplied by SafetyLink Pty Ltd.



© 2018, SafetyLink Pty Ltd, Australia.

**Patents:** SafetyLink Pty Ltd has a multitude of patents, patents pending, design applications, trademarks and copyrighted documents both lodged and issued. Should you wish to know the progress of our intellectual property on a specific product please email us on [ip@safetylink.com](mailto:ip@safetylink.com) and quote the product code.

Doc ID: MKT-629 Version: 7.0