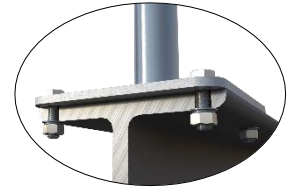


# TUFF-POST

## FrogLine 300mm (Round) TUFF-POST Steel Mounted

- TUFF-POST is designed to raise the height of a Frogline Lifeline system 300mm.
- Designed to be submerged into garden beds, water and other mediums.
- Designed to be **bolted to steel** (concrete anchored version available).



The building or structure for the anchorages must be assessed by an engineer, unless it is clear to a competent height safety installer that the structure is adequate. Refer to system information for site specific use.

PRODUCT COMPONENTS	DESCRIPTION	MATERIAL	QTY	ANCHOR
<b>TUFF POST END ANCHOR – PRODUCT CODE: STAT.FROGTUFF002S–300R</b>				
FROGLINE END	FrogLine Base End	316SS	1	
BOLT-M16x50mm-SS	Bolt: M16 x 50mm	316SS	1	
WASHER M16	Washer: M16	316SS	1	
WASHER M16_SPRING	Spring Washer: M16	316SS	1	
TUFF-POST300R	TUFF-POST 300mm (Round)	316SS	1	
BOLT-M16x50mm-SS	Bolt: M16x50mm Set Screw (Length TBC)	316SS	4	
WASHER M16	Washer: M16	316SS	4	
WASHER M16_SPRING	Spring Washer: M16	316SS	4	
NUT M16	Nut: M16	316SS	4	
<b>TUFF POST INTERMEDIATE ANCHOR – PRODUCT CODE: STAT.FROGTUFF001S–300R</b>				
FROGLINE INT	FrogLine Base Intermediate	316SS	1	
BOLT-M16x50mm-SS	Bolt: M16 x 50mm	316SS	1	
WASHER M16	Washer: M16	316SS	1	
WASHER M16_SPRING	Spring Washer: M16	316SS	1	
TUFF-POST300R	TUFF-POST 300mm (Round)	316SS	1	
BOLT-M16x50mm-SS	Bolt: M16x50mm Set Screw (Length TBC)	316SS	4	
WASHER M16	Washer: M16 316	316SS	4	
WASHER M16_SPRING	Spring Washer: M16	316SS	4	
NUT M16	Nut: M16	316SS	4	
<b>TUFF POST INTERMEDIATE EXT ANCHOR – PRODUCT CODE: STAT.FROGTUFF008S–300R</b>				
FROGLINE INT_EXT	FrogLine Base Intermediate Extended	316SS	1	
BOLT-M16x50mm-SS	Bolt: M16 x 50mm	316SS	1	
WASHER M16	Washer: M16	316SS	1	
WASHER M16_SPRING	Spring Washer: M16	316SS	1	
TUFF-POST300R	TUFF-POST 300mm (Round)	316SS	1	
BOLT-M16x50mm-SS	Bolt: M16x50mm Set Screw (Length TBC)	316SS	4	
WASHER M16	Washer: M16	316SS	4	
WASHER M16_SPRING	Spring Washer: M16	316SS	4	
NUT M16	Nut: M16	316SS	4	
<b>TUFF POST CORNER ANCHOR – PRODUCT CODE: STAT.FROGTUFF003S–300R</b>				
FROGLINE CNR	FrogLine Base Corner	316SS	1	
BOLT-M16x50mm-SS	Bolt: M16 x 50mm	316SS	1	
WASHER M16	Washer: M16	316SS	1	
WASHER M16_SPRING	Spring Washer: M16	316SS	1	
TUFF-POST300R	TUFF-POST 300mm (Round)	316SS	1	
BOLT-M16x50mm-SS	Bolt: M16x50mm Set Screw (Length TBC)	316SS	4	
WASHER M16	Washer: M16	316SS	4	
WASHER M16_SPRING	Spring Washer: M16	316SS	4	
NUT M16	Nut: M16	316SS	4	

All products must be installed in accordance with SafetyLink's installation handbook, using only products supplied by SafetyLink Pty Ltd.



© 2018, SafetyLink Pty Ltd, Australia.

Patents: SafetyLink Pty Ltd has a multitude of patents, patents pending, design applications, trademarks and copyrighted documents both lodged and issued. Should you wish to know the progress of our intellectual property on a specific product please email us on [ip@safetylink.com](mailto:ip@safetylink.com) and quote the product code.

Doc ID: MKT-627 Version: 4.0



SCAN ME  
FrogLine  
In Use



SCAN ME  
Terms and  
Conditions



SCAN ME  
Catalogue



SCAN ME  
Installation  
Handbook



SCAN ME  
Safety Centre  
Training

# DATA SHEET



ISO 9001  
Quality  
Management  
Systems  
CERTIFIED

FS 707792

Asia-Pacific/The Americas  
[info@safetylink.com](mailto:info@safetylink.com)

Europe/Africa/Middle East  
[europa.sales@safetylink.com](mailto:europa.sales@safetylink.com)

Northern Europe  
[uk.sales@safetylink.com](mailto:uk.sales@safetylink.com)