



TUFF-POST-300MM Steel Mounted

TUFF-POST is a sealed unit made entirely from stainless steel. Designed to be submerged into garden beds, water and other mediums. **TUFF-POST** is used in conjunction with a **SafetyLink** lifeline or energy absorbing eyebolt system.

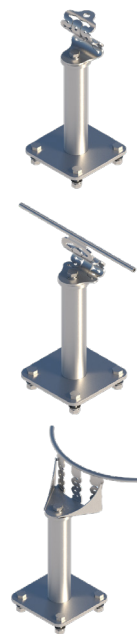
- ❑ **TUFF-POST 300** is designed to raise the height of a height safety system 300mm off the ground.
- ❑ Designed to be bolted into steel (concrete version available).
- ❑ Three sizes to choose from either 150mm, 300mm or 600mm **TUFF-POST**.
- ❑ Suits positions like garden beds on roof tops.

Benefits of choosing **SafetyLink**:

The **TUFF-POST** when installed with a lifeline is used with **SafetyLink's** energy absorbing **FrogLine** Lifeline. The **FrogLine** Lifeline has advanced shock absorbing serpentines designed into each anchor with innovative built-in fall indicators. Therefore reducing the load off the structure and the person in the event of a fall.

The **TUFF-POST** can be used in conjunction with a horizontal lifeline or individual roof anchor.

When installing the **TUFF-POST** as an individual anchor **SafetyLink's** **RetroLink** is installed onto the **TUFF-POST** creating a fall arrest / rope access anchor.



SafetyLink will provide you with the following:

- ❑ All products tested and manufactured to Australian and New Zealand Standards.
- ❑ All distributors and installers are trained to use **SafetyLink** products.
- ❑ Supply installation guides, testing results and product sheets.
- ❑ Layout Design Service providing compliant roof safety systems.
- ❑ Supply a large range of roof anchors that protect you from the ground up, allowing complete access to your roof.
- ❑ Installers are qualified to do yearly inspections on your anchors as per Australian and New Zealand Standards.



SafetyLink Pty Ltd **1300 789 545**
+61 2 4964 1068 info@safetylink.com



For further information and to order our products visit our website.

www.safetylink.com