



SCAN ME

www.safetylink.com



SCAN ME

Catalogue



SCAN ME

Anchor Layout Video



SCAN ME

Safety Training

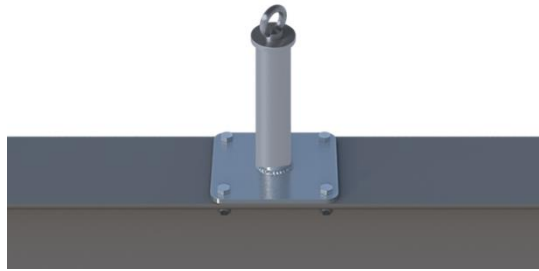
DATA SHEET



FS 70792

TUFF-POST

Steel Mounted TUFF-POST (Round) with Collared Eyebolt



- TUFF-POST is designed to raise a height safety system by 150mm, 300mm, 600mm or 900mm.
- TUFF-POST is a sealed unit made entirely from stainless steel, designed to be submerged into garden beds, water and other mediums. Designed to be **bolted to steel**.
- Anchors used for **Fall Arrest - 150, 300, 600, 900mm. Rope Access/Abseiling - 150, 300 & 600mm.**

The building or structure for the anchorages must be assessed by an engineer, unless it is clear to a competent height safety installer that the structure is adequate. Refer to system information for site specific use.

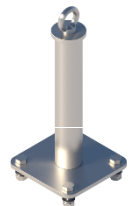
COMPLETE UNIT - PRODUCT CODE: TUFF-POST150R-S-COL

Product Parts	Description	Qty	Material
EYEBOLT M16x26mm	Collared Eyebolt: M16x26mm	1	316SS
WASHER M16_SPRING	Spring Washer: M16	1	316SS
TUFF-POST150R	TUFF-POST 150mm (Round)	1	316SS
BOLT-M12x50mm-SS	Bolt: M16x50mm Set Screw (Length TBC)	2	316SS
WASHER M12	Washer: M12	2	316SS
SPRING WASHER M12	Spring Washer: M12	2	316SS
NUT M12_316	Nut: M12	2	316SS



COMPLETE UNIT - PRODUCT CODE: TUFF-POST300R-S-COL

Product Parts	Description	Qty	Material
EYEBOLT M16x26mm	Collared Eyebolt: M16x26mm	1	316SS
WASHER M16_SPRING	Spring Washer: M16	1	316SS
TUFF-POST300R	TUFF-POST 300mm (Round)	1	316SS
BOLT-M16x50mm-SS	Bolt: M16x50mm Set Screw (Length TBC)	4	316SS
WASHER M16	Washer: M16	4	316SS
SPRING WASHER M16	Spring Washer: M16	4	316SS
NUT M16_316	Nut: M16 316	4	316SS



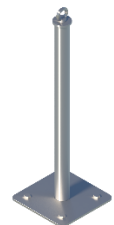
COMPLETE UNIT - PRODUCT CODE: TUFF-POST600R-S-COL

Product Parts	Description	Qty	Material
EYEBOLT M16x26mm	Collared Eyebolt: M16x26mm	1	316SS
WASHER M16_SPRING	Spring Washer: M16	1	316SS
TUFF-POST600R	TUFF-POST 600mm (Round)	1	316SS
BOLT-M16x50mm-SS	Bolt: M16x50mm Set Screw (Length TBC)	4	316SS
WASHER M16	Washer: M16	4	316SS
SPRING WASHER M16	Spring Washer: M16	4	316SS
NUT M16_316	Nut: M16	4	316SS



COMPLETE UNIT - PRODUCT CODE: TUFF-POST900R-S-COL (FALL ARREST ONLY)

Product Parts	Description	Qty	Material
EYEBOLT M16x26mm	Collared Eyebolt: M16x26mm	1	316SS
WASHER M16_SPRING	Spring Washer: M16	1	316SS
TUFF-POST900R	TUFF-POST 900mm (Round)	1	316SS
BOLT-M16x50mm-SS	Bolt: M16x50mm Set Screw (Length TBC)	4	316SS
WASHER M16	Washer: M16	4	316SS
SPRING WASHER M16	Spring Washer: M16	4	316SS
NUT M16_316	Nut: M16	4	316SS



All products must be installed in accordance with SafetyLink's installation handbook, using only products supplied by SafetyLink Pty Ltd.



© 2018, SafetyLink Pty Ltd, Australia.

Patents: SafetyLink Pty Ltd has a multitude of patents, patents pending, design applications, trademarks and copyrighted documents both lodged and issued. Should you wish to know the progress of our intellectual property on a specific product please email us on ip@safetylink.com and quote the product code.

Doc ID: MKT-631 Version: 6.0

Asia-Pacific/The Americas
info@safetylink.com

Europe/Africa/Middle East
europe.sales@safetylink.com

Northern Europe
uk.sales@safetylink.com