



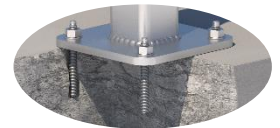
# CLASSIC TUFF-POST

FrogLine 600mm TUFF-POST (Square) Concrete Mounted



- TUFF-POST is designed to raise the height of a Frogline Lifeline system 600mm.
- Designed to be submerged into garden beds, water and other mediums.
- Designed to be **anchored into concrete** (steel bolted version available).

The building or structure for the anchorages must be assessed by an engineer, unless it is clear to a competent height safety installer that the structure is adequate. Refer to system information for site specific use.



PRODUCT COMPONENTS	DESCRIPTION	MATERIAL	QTY	ANCHOR
<b>TUFF POST END ANCHOR – PRODUCT CODE: STAT.FROGTUFF002C-600</b>				
FROGLINE END	FrogLine Base End	316SS	1	
BOLT-M16x50mm-SS	Bolt: M16x50mm Set Screw	316SS	1	
WASHER M16_SPRING	Spring Washer: M16	316SS	1	
WASHER M16_DONUT	Washer: DonutLink M16	316SS	1	
TUFF-POST600	TUFF-POST 600mm (Square)	316SS	1	
CON-M16x160	Anchor Rod M16x160, Nut, Spring Washer & Washer	316SS	4	
<b>TUFF POST INTERMEDIATE ANCHOR – PRODUCT CODE: STAT.FROGTUFF001C-600</b>				
FROGLINE INT	FrogLine Base Intermediate	316SS	1	
BOLT-M16x50mm-SS	Bolt: M16x50mm Set Screw	316SS	1	
WASHER M16_SPRING	Spring Washer: M16	316SS	1	
WASHER M16_DONUT	Washer: DonutLink M16	316SS	1	
TUFF-POST600	TUFF-POST 600mm (Square)	316SS	1	
CON-M16x160	Anchor Rod M16x160, Nut, Spring Washer & Washer	316SS	4	
<b>TUFF POST INTERMEDIATE EXT ANCHOR – PRODUCT CODE: STAT.FROGTUFF008C-600</b>				
FROGLINE INT_EXT	FrogLine Base Intermediate Extended	316SS	1	
BOLT-M16x50mm-SS	Bolt: M16x50mm Set Screw	316SS	1	
WASHER M16_SPRING	Spring Washer: M16	316SS	1	
WASHER M16_DONUT	Washer: DonutLink M16	316SS	1	
TUFF-POST600	TUFF-POST 600mm (Square)	316SS	1	
CON-M16x160	Anchor Rod M16x160, Nut, Spring Washer & Washer	316SS	4	
<b>TUFF POST CORNER ANCHOR – PRODUCT CODE: STAT.FROGTUFF003C-600</b>				
FROGLINE CNR	FrogLine Base Corner	316SS	1	
BOLT-M16x50mm-SS	Bolt: M16x50mm Set Screw	316SS	1	
WASHER M16_SPRING	Spring Washer: M16	316SS	1	
WASHER M16_DONUT	Washer: DonutLink M16	316SS	1	
TUFF-POST600	TUFF-POST 600mm (Square)	316SS	1	
CON-M16x160	Anchor Rod M16x160, Nut, Spring Washer & Washer	316SS	4	

**Rated 15kN one person anchor**

1. To comply with Australian/European Standards each TUFF-POST unit must be tested after installation.
2. Test consists of ultimate pull out force proof loading to 50% (7.5kN) of design purpose (15kN) of anchorage.
3. Allow sufficient time for curing before testing, see instructions on fastener container.
4. Recommended chemical anchor: Fischer FIS-V as per Fischer Product Supplement Data sheets.

All products must be installed in accordance with SafetyLink's installation handbook, using only products supplied by SafetyLink Pty Ltd.



© 2018, SafetyLink Pty Ltd, Australia.

Patents: SafetyLink Pty Ltd has a multitude of patents, patents pending, design applications, trademarks and copyrighted documents both lodged and issued. Should you wish to know the progress of our intellectual property on a specific product please email us on [ip@safetylink.com](mailto:ip@safetylink.com) and quote the product code.

Doc ID: MKT-406 Version: 9.0



SCAN ME

FrogLine In Use



SCAN ME

Terms and Conditions



SCAN ME

Catalogue



SCAN ME

Chemical Adhesive Data Sheet

DATA SHEET



FS 707792