

INSTALLATION HANDBOOK

POLE ANCHOR

SafetyLink is an innovative anchor company achieving success and keeping you safe whilst working at heights.

- RECREATIONAL EQUIPMENT
- ROOF ANCHORS
- HORIZONTAL LIFELINES
- PERMANENT LADDERS
- LADDER STABILIZERS
- TEMPORARY ANCHOR



Read entire handbook before installing SafetyLink products. All products must be installed in accordance with SafetyLink's installation handbook, using only products supplied by SafetyLink Pty Ltd. Failure to follow all warnings and instructions may result in serious injury or death.



SafetyLink Pty Ltd
AU: 1300 789 545
INT: +61 2 4964 1068
FAX: +61 2 4964 1069
info@safetylink.com

www.safetylink.com

TABLE OF CONTENTS

INSTALLATION OF SAFETYLINK POLE ANCHOR

WARNINGS.....	3
MAINTENANCE – PERIODIC INSPECTIONS.....	4
WARRANTIES	5
POLE ANCHOR.....	6
COMPONENTS.....	6
INSTALLATION	7
STEP 1: DETERMINE APPROPRIATE LOCATION.....	7
DIAGRAM 1	7
STEP 2: PARTIAL ASSEMBLY OF POLE ARMS. (ON THE GROUND).....	8
DIAGRAM 2	8
STEP 3: ASCEND THE POLE TO INSTALLATION LOCATION	9
DIAGRAM 3	9
DIAGRAM 4	9
DIAGRAM 5	10
APPENDIX A: PACKING PLATES IF REQUIRED:	10
NOTES	11
IN CASE OF ACCIDENT.....	12



**READ CAREFULLY SOMEONE'S LIFE DEPENDS ON IT
ALL POLELINKS MUST BE INSPECTED EVERY 12 MONTHS.
INSTALLATION MUST BE CARRIED OUT BY, OR UNDER THE SUPERVISION OF A COMPETENT PERSON.**

POLE ANCHOR HAS BEEN TESTED TO COMPLY WITH AUSTRALIAN STANDARDS

- If any doubt exists as to the strength of the structure an engineer should make an assessment.
- During installation you must be safe at all times.
- Never use Pole Anchor where electrical hazards exist.
- Never use Pole Anchor to support more than one person.
- Never exceed load rating of 15kN.
- Never use a damaged Pole Anchor.
- Always ensure all locking devices are secure.
- Never use an incomplete Pole Anchor.
- Inspections must to be carried out by a competent person.
- Visually inspect Pole Anchor for any signs of deterioration before each use.
- Ensure Pole Anchor is firmly secured to the structure as per SafetyLink Installation Handbook.
- When installing anchor points all safety procedures must comply in accordance with the correct safety code/s of practice/s for safe work at heights.
- Visually inspect the parent structure for modifications or deterioration which might lead to loss of anchorage strength.
- Bolts or screws should be inspected and secure before the Pole Anchor is used.
- If a bolt or screw is found to be loose or missing, the Pole Anchor should not be used until repairs are made.
- Under no circumstances shall any temporary repairs be made to any Pole Anchor.
- Your life depends upon the continued efficiency and durability of the equipment, so a proper inspection is required to avoid hazard.
- When the Pole Anchor is to be exposed to a corrosive or extreme environment that could significantly reduce the working load of the Pole Anchor, the manufacturer or a competent person shall be consulted prior to such exposure.
- The Pole Anchor is designed for safe use with its intended single directional vertical load only.

MAINTENANCE – PERIODIC INSPECTIONS

Product Code: POLEANC001

“POLE ANCHOR NEEDS TO BE VISUALLY INSPECTED PRIOR TO EACH USE BY THE USER FOR SIGNS OF DAMAGE.

Deformed/bent/cracked pole anchor arms and/or brace sections will indicate a large fall has been arrested and the pole anchor will require replacement and immediate removal from service.

In the event of any fall being arrested by the Pole Anchor, it will require assessment by a competent person before further use.”

Procedures to be followed at inspection time:

- **Check all Bolts/Nuts/Screws & attachment hardware such as Rapides for appropriate tightness.**
- **Assess the Stainless steel arms of the Pole Anchor for signs of arresting a fall. Deformed/bent/cracked Pole Anchor arms will indicate a large fall has been arrested and the Pole Anchor will require replacement and immediate removal from service.**
- Visually inspect the components of the Pole Anchor for corrosion. Superficial surface marking is permitted while deeper corrosion or pitting would require attention.
- Under no circumstances shall any temporary repairs be made to any Pole Anchor.
- Visually inspect the parent structure for modifications or deterioration which might lead to loss of anchorage strength, if any doubts exist consult an engineer.

YOUR LIFE DEPENDS UPON THE CONTINUED EFFICIENCY AND DURABILITY OF THE EQUIPMENT SO A PROPER INSPECTION IS REQUIRED TO AVOID ACCIDENTS.

IN ADDITION TO SAFETYLINK PTY LTD EQUIPMENT, ALL ANCILLARY EQUIPMENT MUST BE INSPECTED IN ACCORDANCE WITH APPLICABLE REGULATORY REQUIREMENTS AND THE MANUFACTURER’S INSTRUCTIONS.



**FOR MAINTENANCE ADVICE AND SERVICES PLEASE CONTACT SAFETYLINK
ON +61 249 641068 OR 1300 789545 FOR YOUR NEAREST SAFETYLINK INSPECTION SERVICE
CENTRE OR EMAIL: info@safetylink.com**



WARRANTIES

EXTRACT: SafetyLink Pty Ltd STANDARD TERMS AND CONDITIONS

- 11.1 To the extent permitted by law all implied conditions, warranties and undertakings are expressly excluded.
- 11.2 Except as provided in this clause the Company shall not be liable for any loss or damage, whether direct or indirect (including consequential losses or damage) arising out of any breach of contract by the Company or any negligence of the Company, its employees or agents.
- 11.3 Should the Company be liable for a breach of a guarantee, condition or warranty implied by the Australian Consumer Law (not being a guarantee, condition or warranty implied by sections 51, 52 and 53 of that Law) then its liability for a breach of any such condition or warranty express or implied shall be limited, at its option, to any one or more of the following.
- A) in case of Goods
 - (I) the replacement of the Goods or the supply of equivalent Goods.
 - (II) the repair of the goods,
 - (III) the payment of the cost of replacing the Goods or acquiring equivalent Goods.
 - (IV) The payment of the cost of having the Goods repaired.Provided that any such Goods are returned to the Company by the Purchaser at the Purchaser's expense.
 - B) in the case of services
 - (i) the supply of the services again,
 - (ii) the payment of the cost of having the services supplies again.
- 11.4 The Company will not liable for the costs of recovery of the Goods from the field, loss of use of the Goods, loss of time, inconvenience, incidental or consequential loss or damage, nor for any other loss or damage other than as stated above, whether ordinary or exemplary, caused either directly or indirectly by use of the Goods.
- 11.5 The Company warrants that at the time of shipment, Products manufactured by it will be free from defects in material and workmanship. In the absence of a modified written warranty, the Company agrees to making good any such defects by repairing the same or at the Company 's option by replacement, for a period of (1) one year from the date of shipment. This limited warranty applies provided that:
- (a) defects have arising solely from faulty materials or workmanship;
 - (b) the Products have not received maltreatment, inattention or interference;
 - (c) **the Products have been installed in accordance with the Company's Installation Handbooks using only products supplied by the Company;**
 - (d) accessories used with the Products are manufactured by or approved by the Company ;
 - (e) the Products are maintained in accordance with Australian Standard 1891.4 (section 9).
 - (f) you notify any claim under this warranty to SafetyLink in writing to the address below no later than 14 days after the event or occurrence concerning the produce giving rise to the claim and you pay all costs related to your claim.

This warranty does not apply to any defects or other malfunctions caused to the Goods by accident, neglect, vandalism, misuse, alteration, modification or unusual physical, environment or electrical stress.

Please note that the benefits to the purchaser (as a consumer) given by this warranty are in addition to your other rights and remedies under the Australian Consumer Law. Our goods come with guarantees that cannot be excluded under the Australian Consumer Law. You are entitled to a replacement or refund for a major failure and compensation for any other reasonably foreseeable loss or damage. You are also entitled to have the goods repaired or replaced if the goods fail to be of acceptable quality and the failure does not amount to a major failure.

- 11.6 If any goods are not manufactured by the Company, the guarantee of the manufacturer thereof shall be accepted by the Purchaser as the only express warranty given in respect of the goods.
- 11.7 Except as provided in this clause 11, all express and implied warranties, guarantees and conditions under statute or general law as the merchantability, description, quality, suitability or fitness of the Products for any purpose or as to design, assembly, installation, materials or workmanship or otherwise are hereby expressly excluded (to the extent to which they may be excluded by law).

PLEASE SEE SAFETYLINK PTY LTD FULL STANDARD TERMS OF CONDITIONS OF SALE FOR FURTHER REFERENCE.



POLE ANCHOR

Product Code: POLEANC001

COMPONENTS

2 X Short Curved Bracket (Stainless Steel)

2 X Long Curved Bracket (Stainless Steel)

1 X Short Straight Brace (Stainless Steel)

4 X M12 50mm Set Screw (Stainless Steel)

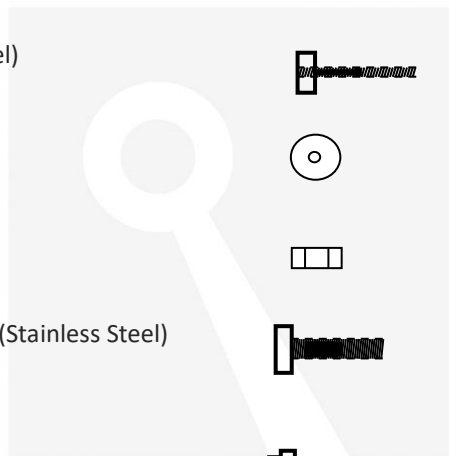
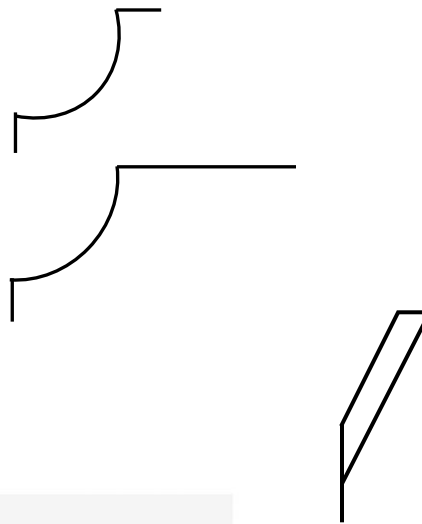
4 X M12 Washer (Stainless Steel)

4 X M12 Nyloc Nut (Stainless Steel)

1 X M16 25mm Bolt/Washer/Nyloc Nut (Stainless Steel)

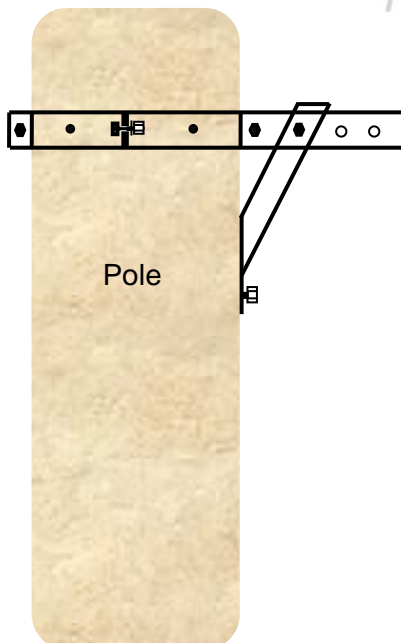
4 X 14-10 Roofing Screws

1 X Coach Screw

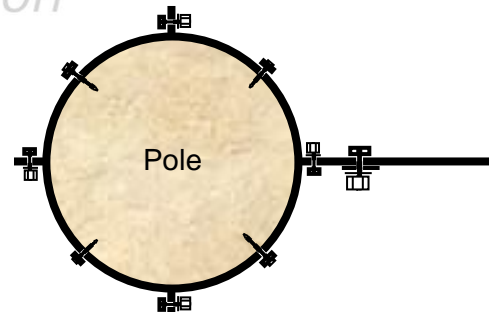


SafetyLink®
Innovative
Fall Protection

Side View



Top View



POLE ANCHOR

INSTALLATION

NOTE: Pole Anchor must only be installed whilst in a Safe Work Position by a suitably competent person from an elevated work platform (EWP) or by appropriate rope access (RA) methods only.

Tools required:

1. Battery drill
2. Pilot drill bit
3. Tek screw bit
4. 2 x spanner/shifter/socket.

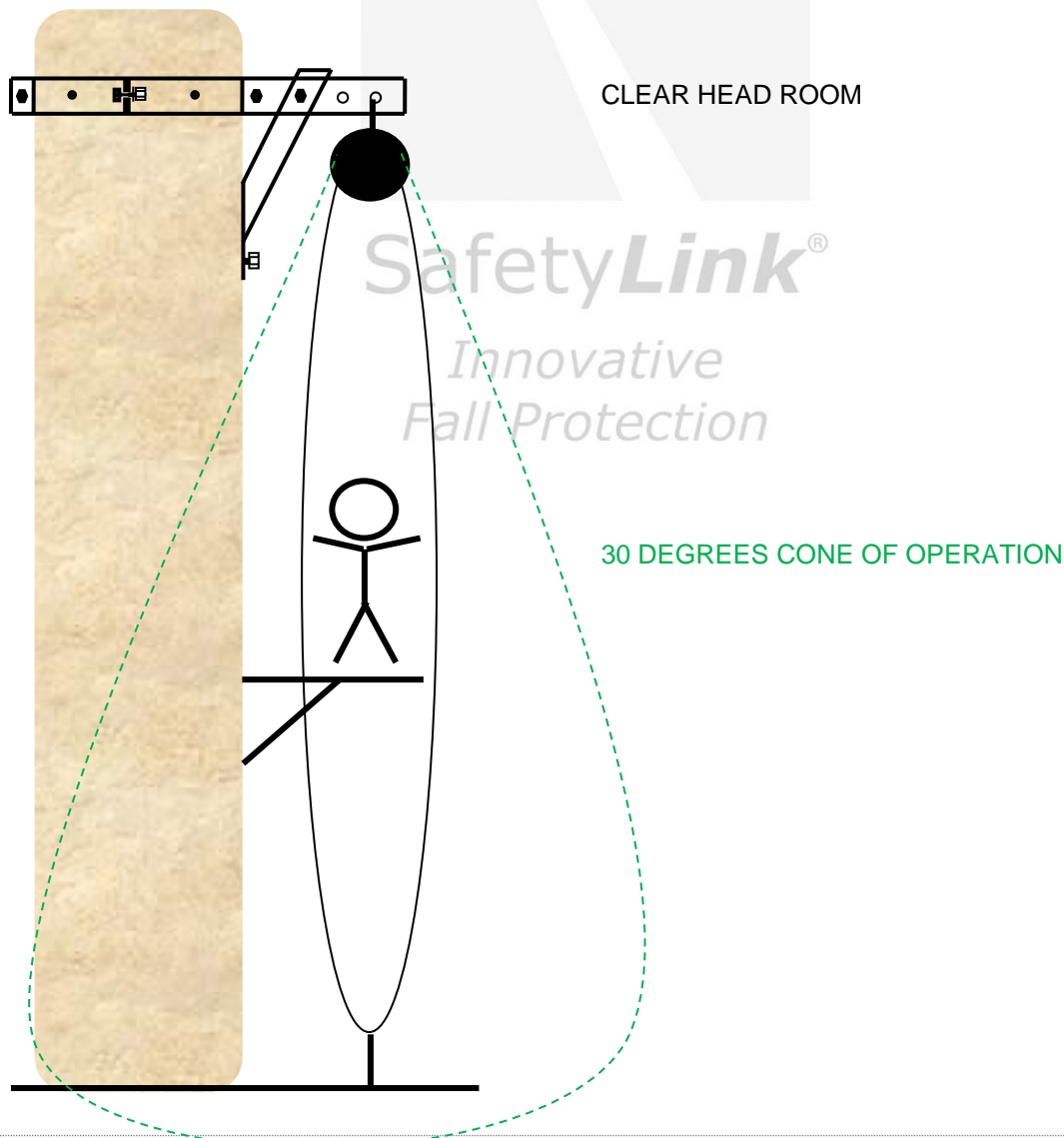
All tools should be secured with leash/lanyards to prevent accidental dropping from heights.
A safe work exclusion zone needs to be created at the base of the installation site.

STEP 1: DETERMINE APPROPRIATE LOCATION

Consider:

- Sufficient head clearance from end users.
- Ensure that hardware/rope/cable that will be attached to the Pole Anchor will have adequate clearance from all other equipment/structure that may be on the pole.
- Minimum pendulum effect must be present for the user accessing with the end system. Pendulum effect must be less than 30 degrees.

DIAGRAM 1

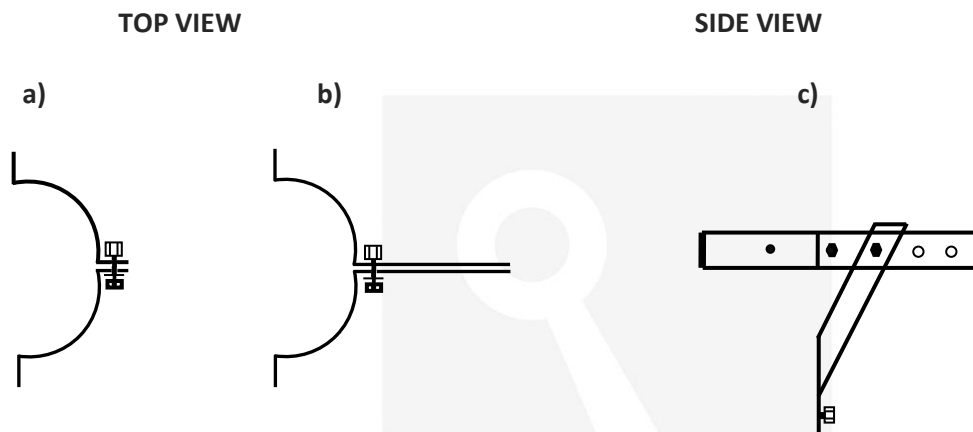


POLE ANCHOR

STEP 2: PARTIAL ASSEMBLY OF POLE ARMS. (ON THE GROUND)

- a) Bolt together loosely the two *Short Curved Bracket* with a M12 50mm Bolt (see diagram below).
- b) Bolt together loosely the two *Long Curved Bracket* with a M12 50mm Bolt (see diagram below).
- c) Bolt on *Short Straight Brace* with M16 25mm bolt to the first anchor hole on the assembled *Long Curved Bracket* (see diagram below).

DIAGRAM 2



SafetyLink[®]
Innovative
Fall Protection

- ⚠ During installation you must be safe at all times.**
- ⚠ READ ALL OF THESE INSTRUCTIONS, SOMEONES LIFE DEPENDS ON IT.**
- ⚠ If any doubt exists as to the strength of the structure an engineer should make the assessment.**
- ⚠ Failure to follow all instructions could result in serious injury or death.**

POLE ANCHOR

STEP 3: ASCEND THE POLE TO INSTALLATION LOCATION

Locate the assembled *Long Curved Brackets* on the pole in the desired location, making sure the *Short Straight Brace* is pointing towards the ground.

- Locate the assembled *Short Curved Bracket* around the pole and secure loosely to the *Long Curved Brackets* with two (2) x M12 50mm bolts.
- Install one (1) x Tek screw through the appropriate hole in ONE of the *Long Curved Brackets* sections of the Pole Anchor, securing the unit to the pole. (It is recommended to pilot drill a hole for this in the pole).
- Tension up all four (4) x M12 50mm bolts on the *Curved Brackets*. Start with the one securing the two *Long Curved Brackets* together. The *Long Curved Brackets* need to be as close together as possible to enable a connector to easily be used through the end attachment holes later. The remaining three (3) x M12 50mm bolts should be tensioned up evenly to create a tight fit around the pole.
- Pilot drill and install the remaining 3 x Tek screws in the remaining holes around the pole.
- Pilot drill and install the coach screw to the short brace bar and pole.
- Attach the end connector and hardware.
- Double check all bolts/nuts/screw/connectors are tight.

DIAGRAM 3

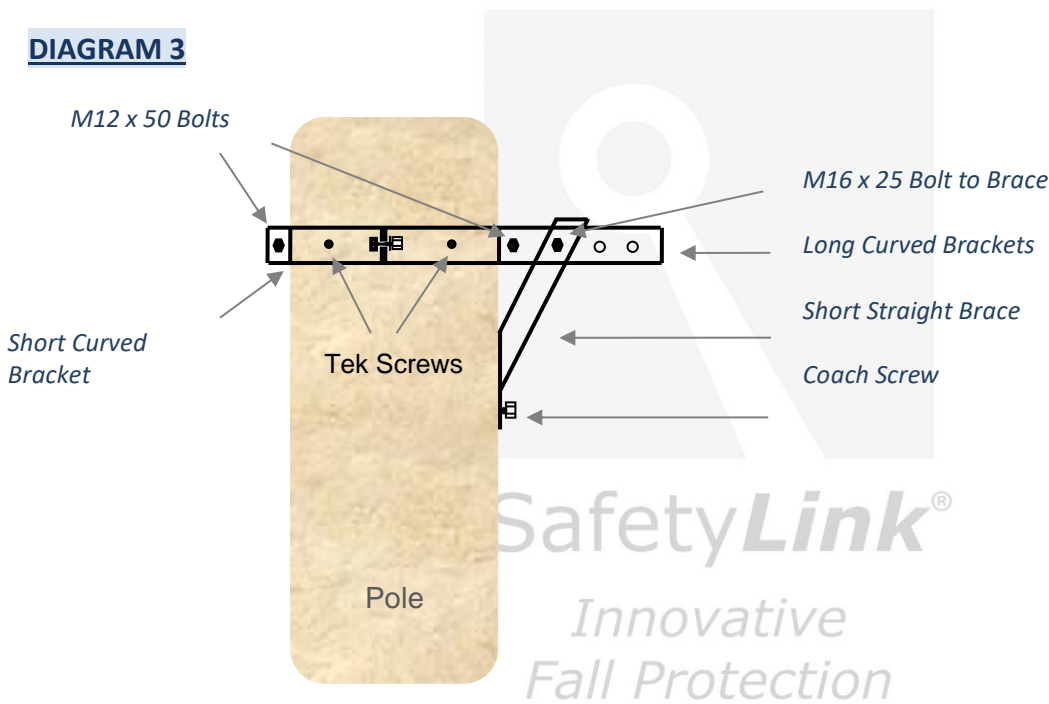
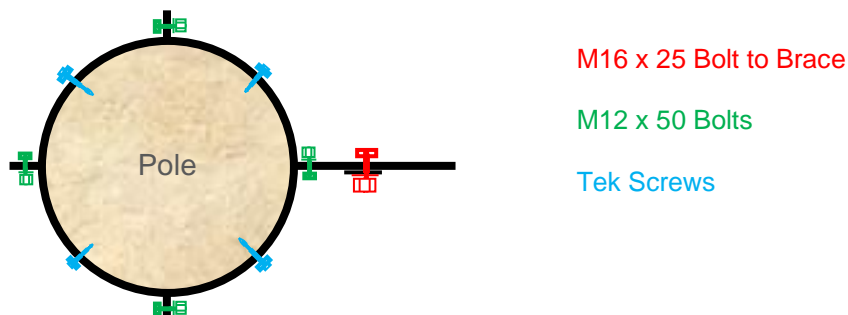


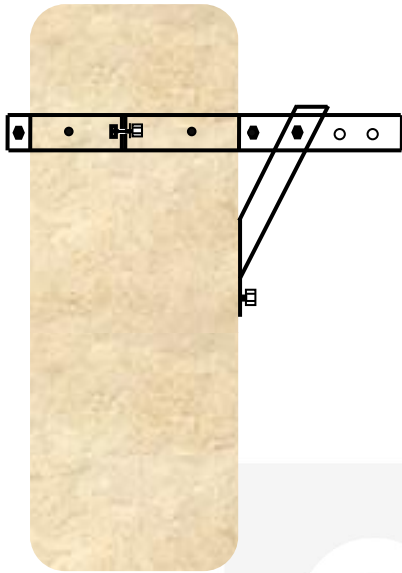
DIAGRAM 4



The Pole Anchor is now ready for use.

POLE ANCHOR

DIAGRAM 5



APPENDIX A: PACKING PLATES IF REQUIRED:

The pole anchor bracket has been designed for poles with a diameter of between 250-350mm. For smaller size poles packing plates have been provided and are to be fitted as follows:

1. Follow assembly steps for the *Pole Anchor* "on the ground".
2. When securing the *Long Curved Bracket* and *Short curved Bracket* onto the pole with the Tek screws, insert *Packing Plates* between the pole and the *Curved Brackets*. Ensure the holes for the Tek screws in the *Curved Brackets* with the holes in the *Packing Plates*.
3. Ensure the packing plates are positioned so the foam tape is touching the curved bracket to enable a barrier between the stainless steel *Curved Brackets* and the aluminium *Packing Plates*.
4. Secure *Curved Brackets* with Tek Screws as per installation instructions.



SafetyLink[®]

*Innovative
Fall Protection*

IN CASE OF ACCIDENT

⚠️ A FALL RESCUE PLAN AND SAFE WORK STATEMENT MUST BE DEVELOPED PRIOR TO USING SAFETYLINK SYSTEMS AND EQUIPMENT.

⚠️ PERSONS WORKING AT HEIGHTS SHOULD NOT WORK ALONE.

It is critical that before using any SafetyLink Systems a fall rescue plan is in place for any persons suspended mid-air following a fall. Serious injury or death can occur in a matter of minutes, particularly if a person's movement or breathing is restricted or loss of consciousness has occurred. In accordance with your fall rescue plan and appropriate first aid procedures it is essential to remove the person from the suspended position as quickly as possible.

IN ACCORDANCE WITH AS/NZS 1891.4:2009 CLAUSE 9.5

EQUIPMENT WHICH HAS ARRESTED A FALL OR SHOWS A DEFECT

Any piece of equipment including both personal and permanently installed items, which has been used to arrest a fall or which shows any defect during operator or periodic inspection shall be withdrawn from service immediately and a replacement obtained if necessary. A label indicating the condition or defect should be attached to the equipment, and it should be examined by a competent person who will decide whether the equipment is to be destroyed or repaired if necessary and returned to service. In the latter case, details of any repair shall be documented and a copy given to the operator.



DISTRIBUTOR:

SafetyLink Pty Ltd | ABN 83 081 777 371

Phone: 1300 789 545 or +61 2 4964 1068 | Fax: 1300 738 071 or +61 2 49641069

info@safetylink.com | www.safetylink.com