



Terms and Conditions



Website



Installation Handbook

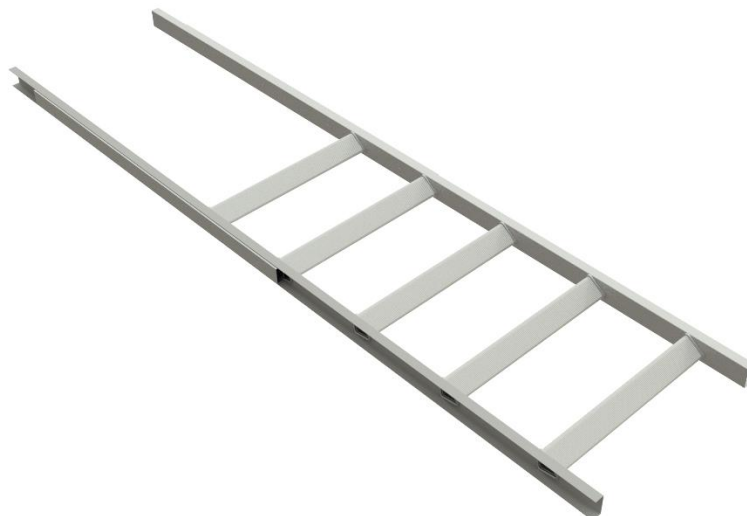


Catalogue

DATA SHEET

PERMANENT LADDERS

2400 Ladder Head Section | Product Code: LADER001.01



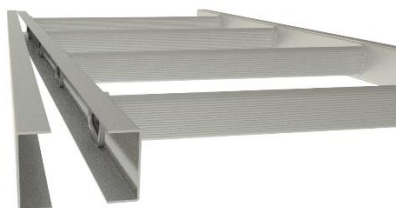
- 2400mm ladderhead.
- 1350mm ladder section with step through stile.
- Includes coupling channels for joining sections together.
- Swaged rungs for extra strength.
- All rungs are ergonomically designed for maximum grip at all angles.
- Heavy gauge aluminium for superior strength.



STANDARDS

SafetyLink ladders are manufactured to AS 1657 Standards.

Assembling the SafetyLink® Permanent Ladder System is a simple exercise with SafetyLink's comprehensive installation guides. The individual ladder pieces join together with an outer coupling channel that is placed over the top of the inner channel and pop riveted into place.



A FALL RESCUE PLAN SHOULD BE DEVELOPED PRIOR TO USING SAFETYLINK EQUIPMENT

COMPLETE UNIT - PRODUCT CODE: LADER001.01

Description	Weight (kg)	Measurements	Material
2400mm Ladderhead	7.5	2.4mx60cmx7cm	Marine Grade Aluminium

© 2018, SafetyLink Pty Ltd, Australia.

Patents: SafetyLink Pty Ltd has a multitude of patents, patents pending, design applications, trademarks and copyrighted documents both lodged and issued. Should you wish to know the progress of our intellectual property on a specific product please email us on ip@safetylink.com and quote the product code.

Doc ID: MKT-117 Version: 4.0

www.safetylink.com | info@safetylink.com | 1300 789 545 | +61 2 4964 1068



IS 707792