



PERMANENT LADDERS

1200 Ladder Section | Product Code: LADER001.03



Terms and Conditions



Website



Installation Handbook



Catalogue



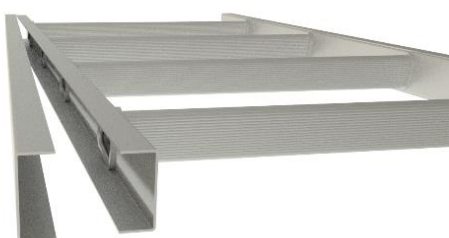
- 1200mm ladder section.
- Includes coupling channels for joining sections together.
- Swaged rungs for extra strength.
- All rungs are ergonomically designed for maximum grip at all angles.
- Heavy gauge aluminium for superior strength.



STANDARDS

SafetyLink ladders are manufactured to AS 1657 Standards.

Assembling the SafetyLink® Permanent Ladder System is a simple exercise with SafetyLink's comprehensive installation guides. The individual ladder pieces join together with an outer coupling channel that is placed over the top of the inner channel and pop riveted into place.



A FALL RESCUE PLAN SHOULD BE DEVELOPED PRIOR TO USING SAFETYLINK EQUIPMENT

COMPLETE UNIT - PRODUCT CODE: LADER001.03

Description	Weight (kg)	Measurements	Material
1200mm Ladder Section	5.5	1.2mx60cmx7cm	Marine Grade Aluminium

© 2018, SafetyLink Pty Ltd, Australia.

Patents: SafetyLink Pty Ltd has a multitude of patents, patents pending, design applications, trademarks and copyrighted documents both lodged and issued. Should you wish to know the progress of our intellectual property on a specific product please email us on ip@safetylink.com and quote the product code.

Version 05.18

DATA SHEET



FS 707792