



HORIZONTAL LIFELINE

FrogLine Membrane Surface Mounted Anchors



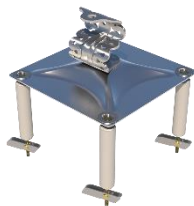
- Horizontal lifeline equipped with an engineered energy absorbing region to minimise loads on users and structures in the event of a fall.
- Specifically for use with permanent horizontal height safety lifeline systems, to be mounted on the surface of membrane roofing.
- Continuous connection with 8mm stainless steel cable, utilising the Frogline Shuttle System, upto four users per system, two users per span.
- Install SafetyLink horizontal lifeline systems on roof pitches no greater than 15 degrees and across roof pitches no greater than 25 degrees.

STANDARDS

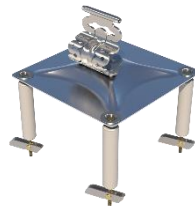
The FrogLine has been tested and manufactured in accordance with AS/NZS 1891.2, ANSI Z359.6-2009, EN 795:2012, CEN/TS 16415:2013 and OSHA 1926.502.

WHAT AM I USED FOR?

The intermediate anchor limits the lifeline span distances, the end anchor attachment points are designed for the cable to start and terminate at and the corner unit is designed for the cable to run through the corner anchor re-directing it by up to 45-90 degrees.



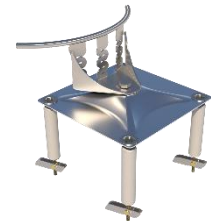
End Anchor
STAT.FROGSSQ002



Intermediate Anchor
STAT.FROGSSQ001



Intermediate
EXTENDED Anchor
STAT.FROGSSQ008



Corner Anchor
STAT.FROGSSQ003

PRODUCT PARTS	DESCRIPTION	MATERIALS	QTY
FROGLINE END	FrogLine Base End	316 Stainless Steel	1
FROGLINE INT	FrogLine Base Intermediate	316 Stainless Steel	1
FROGLINE INT EXT	FrogLine Base Intermediate Extended	316 Stainless Steel	1
FROGLINE CNR	FrogLine Base Corner	316 Stainless Steel	1
ADV-PLATE-SS-295SQ	SurfaceLink Plate 295mmx295mm-MEMBRANE ROOF Washer 70od and Bolt M16x35mm welded to underside	316 Stainless Steel	1
WASHER M16_316	Washer: M16 316SS	316 Stainless Steel	1
WASHER M16_Spring_316	Washer: M16 Spring 316SS	316 Stainless Steel	1
NUT M16	Nut: M16	316 Stainless Steel	1
TOGGLE001	Toggle Bolt 300mm	Bolt/PVC/Foam	4

All products must be installed in accordance with SafetyLink's installation handbook, using only products supplied by SafetyLink Pty Ltd.



© 2018, SafetyLink Pty Ltd, Australia.

Patents: SafetyLink Pty Ltd has a multitude of patents, patents pending, design applications, trademarks and copyrighted documents both lodged and issued. Should you wish to know the progress of our intellectual property on a specific product please email us on ip@safetylink.com and quote the product code.

Doc ID: MKT-255 Version: 10.0

Asia-Pacific/The Americas
info@safetylink.com

Europe/Africa/Middle East
europa.sales@safetylink.com

Northern Europe
uk.sales@safetylink.com



SCAN ME

FrogLine In Use
Video



SCAN ME

Website



SCAN ME

Catalogue



SCAN ME

Safety Centre
Training

DATA SHEET



FS 707792