



# HORIZONTAL LIFELINE

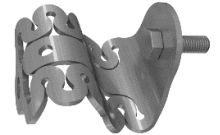
## FrogLine Wall Mounted Steel Lifeline

Wall mounted horizontal lifeline installed into steel construction. The system is equipped with engineered energy absorbing anchors to minimise loads on both the user and structure in the event of a fall. The continuous connection via the Overhead Shuttle System on the 8mm stainless steel cable provides protection for up to four (4) users per system, two (2) users per span.

STANDARDS - The FrogLine has been tested and manufactured in accordance with AS/NZS 1891.2, ANSI Z359.6-2009, EN 795:2012, CEN/TS 16415:2013 and OSHA 1926.502.

### STEEL WALL END ANCHOR - PRODUCT CODE: STAT.FROGSTE002

PRODUCT PARTS	DESCRIPTION	MATERIAL	QTY
FROGLINE END	FrogLine Base End	316SS	1
BOLT-M16x50mm-SS	Bolt: M16x50mm Set Screw	316SS	1
SPRING WASHER M16	Spring Washer: 16mm	316SS	1
WASHER M16	Washer: 16mm	316SS	1
NUT M16	Nut: 16mm	316SS	1



### STEEL WALL INTERMEDIATE ANCHOR - PRODUCT CODE: STAT.FROGSTE001

PRODUCT PARTS	DESCRIPTION	MATERIAL	QTY
FROGLINE INT	FrogLine Base Intermediate	316SS	1
BOLT-M16x50mm-SS	Bolt: M16x50mm Set Screw	316SS	1
SPRING WASHER M16	Spring Washer: 16mm	316SS	1
WASHER M16	Washer: 16mm	316SS	1
NUT M16	Nut: 16mm	316SS	1



### STEEL WALL CORNER ANCHOR - PRODUCT CODE: STAT.FROGSTE011

PRODUCT PARTS	DESCRIPTION	MATERIAL	QTY
FROGLINE INT	FrogLine Base Intermediate	316SS	2
BOLT-M16x50mm-SS	Bolt: M16x50mm Set Screw	316SS	2
SPRING WASHER M16	Spring Washer: 16mm	316SS	2
WASHER M16	Washer: 16mm	316SS	2
NUT M16	Nut: 16mm	316SS	2
STAT.CTUBE001.01	Lifeline Corner Tube 90deg	316SS	1



### STEEL WALL EXTERNAL CORNER ANCHOR - PRODUCT CODE: STAT.FROGSTE006\_EXT

PRODUCT PARTS	DESCRIPTION	MATERIAL	QTY
FROGLINE CNR_WM_EXT	FrogLine Base Corner EXTERNAL WALL	316SS	1
FROGLINE CNR_WM_BRACKET_S	FrogLine Corner WALL BRACKET set	316SS	1
BOLT-M16x35mm-SS	Bolt: M16x35mm Set Screw	316SS	1
BOLT-M16x50mm-SS	Bolt: M16x50mm Set Screw	316SS	2
WASHER M16_Spring_316	Spring Washer: M16	316SS	3
WASHER M16_316	Washer: 16mm	316SS	3
NUT M16_316	Nut: 16mm	316SS	3



### STEEL WALL INTERNAL CORNER ANCHOR - PRODUCT CODE: STAT.FROGSTE006\_INT

PRODUCT PARTS	DESCRIPTION	MATERIAL	QTY
FROGLINE CNR_WM_INT	FrogLine Base Corner WALL INTERNAL	316SS	1
BOLT-M16x50mm-SS	Bolt: M16x50mm Set Screw	316SS	1
WASHER M16_Spring_316	Spring Washer: M16	316SS	1
WASHER M16_316	Washer: 16mm	316SS	1
NUT M16_316	Nut: 16mm	316SS	1



All products must be installed in accordance with SafetyLink's installation handbook.



© 2018, SafetyLink Pty Ltd, Australia.

Patents: SafetyLink Pty Ltd has a multitude of patents, patents pending, design applications, trademarks and copyrighted documents both lodged and issued. Should you wish to know the progress of our intellectual property on a specific product please email us on [ip@safetylink.com](mailto:ip@safetylink.com) and quote the product code.

Doc ID: MKT-262 Version: 14.0



SCAN ME

[www.safetylink.com](http://www.safetylink.com)



SCAN ME

Catalogue



SCAN ME

Install Video



SCAN ME

Safety Centre Training

DATA SHEET



ISO 9001  
Quality  
Management  
Systems  
CERTIFIED

FS 707792

Asia-Pacific/The Americas  
[info@safetylink.com](mailto:info@safetylink.com)

Europe/Africa/Middle East  
[europa.sales@safetylink.com](mailto:europa.sales@safetylink.com)

Northern Europe  
[uk.sales@safetylink.com](mailto:uk.sales@safetylink.com)