

FROGLINK

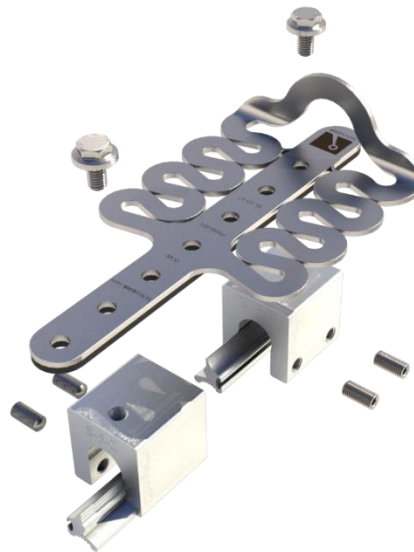
S5_Z Surface Mounted Anchor



Terms and Conditions



Website



SafetyLink's patented surface mounted FrogLink has set a new benchmark in the field of height safety. This revolutionary all in one unit has been designed to attach to Kingzip standing seam roof profiles.

- Fast simple unit for installation, fall protection whilst working at heights.
- Low profile reflective design is a plus for any commercial or residential enterprise wanting to maintain an aesthetically pleasing façade.
- Dynamic design reduces the load back onto the structure and person attached to the anchor.
- Install using 2 x S5 Z Clamp (Clamp, Small Insert Piece, Bolt, 2 x Setscrews).

WHAT AM I USED FOR?

A surface mounted height safety anchor point for use on standing seam metal roofs where access to timber is difficult, will arrest from any direction.

STANDARDS

Complies with AS/NZS 1891.4, AS/NZS 5532-2013, EN 795:2012, CEN/TS 16415:2013, ANSI Z359.18 and OSHA 1926.502.

COMPLETE UNIT - PRODUCT CODE: FROGL001+S5Z

Product Parts	Description	Qty	Weight kg	Material
FROGL001	FrogLink Unit	1	0.291	316 Stainless Steel
S5_Z_BRACKET	S5 Z Clamp	2	0.217	Alum/SS
			0.725	

All products must be installed in accordance with SafetyLink's installation handbook, using only products supplied by SafetyLink Pty Ltd.



© 2018, SafetyLink Pty Ltd, Australia.

Patents: SafetyLink Pty Ltd has a multitude of patents, patents pending, design applications, trademarks and copyrighted documents both lodged and issued. Should you wish to know the progress of our intellectual property on a specific product please email us on ip@safetylink.com and quote the product code.

Doc ID: MKT-265 Version: 5.0

DATA SHEET